

NOTICE OF SALE

Department of Natural Resources & Conservation Timber Sale

The Ashley Schoolhouse Timber Sale is located within Sections 8 & 16, T27N-R23W on the State's Kalispell Unit. Approximately 15,790 tons, consisting of mixed conifer sawlogs, are offered for sale.

Sealed bids will be opened at the Department of Natural Resources & Conservation, 2705 Spurgin Road, Missoula, Montana on **September 20, 2022 at 2:00 p.m.** Bids may be hand delivered or mailed and will be accepted any time prior to the bid opening. DNRC recommends that bidders contact the Trust Land Management Division (406-542-4300) prior to the bid opening to ensure that your bid has been received. **Bids must be accompanied by a deposit of \$25,382.00**, representing 5% of the minimum bid value of the sale in cashier's check, certified check, bank money order or bank draft to be applied to the first sale invoice for the successful bidder. Bid bonds will be accepted and, for the successful bidder, will be closed upon execution of the Timber Sale Contract and Timber Sale Bond.

The sale will be awarded to the highest responsible bidder. If the successful bidder is unable to execute the contract within **30** calendar days from the date the sale is awarded, the bid deposit will be retained by the Department as liquidated damages. The right is reserved to reject any or all bids.

Prospective bidders can obtain the sale prospectus, sale contract and bid forms from the Department of Natural Resources & Conservation, Trust Land Management Division, in Missoula (406-542-4300).

Visit our website at <http://dnrc.mt.gov/divisions/trust/forest-management/timber-sale-information> for upcoming sales and bid results.

TIMBER SALE PROSPECTUS
STATE OF MONTANA DEPARTMENT OF NATURAL RESOURCES AND CONSERVATION

Timber Sale Name: Ashley Schoolhouse			
For specific sale information, contact: Kara Neal			
Phone	406-751-2265	Kalispell Unit Office	
For copies of the Timber Sale Contract and bid forms, contact:			
Phone	406-542-4300	Forest Management Bureau	DNRC Missoula Office
Phone	406-751-2257	Northwestern Land Office	

General Bidding Information

1. Bids must be submitted on Department of Natural Resources & Conservation (State) bid forms.
2. Timber will be sold to the highest responsible bidder; however, the State reserves the right to reject any or all bids.
3. The State recommends that bidders contact the Forest Management Bureau, Trust Land Management Division (406-542-4300) prior to the bid opening to ensure that your bid has been received.
4. A **Bid Deposit** must accompany all bids and must be in the form of cash, cashiers check, certified check, money order, bank draft, surety bond or irrevocable letter of credit.
5. The Purchaser must submit a **Performance Bond** to the State within 30 days of notification of sale award. The bond amount will be, at a minimum, 20% of the total bid value of the sale. The performance bond may be cash, irrevocable letter of credit, surety bond or certificate of deposit. The performance bond must be maintained separately from other payments for the duration of the Timber Sale Contract. See the Timber Sale Contract for additional information.
6. The purchaser must submit an **Advance Stumpage Payment** prior to cutting any timber. The amount of the advance stumpage payment will cover six weeks of harvesting and be based on the expected harvest rate and the bid value of the stumpage. The advance stumpage payment may be cash, irrevocable letter of credit, payment bond or certificate of deposit.
7. At rates specified in the Contract, the purchaser will pay **Forest Improvement Fees** on all sawlog volume. All applicable **Road Use and/or Maintenance fees** will also be paid by the Purchaser in addition to stumpage payments.
8. This sale is being sold based on the gross weight of all species. Minimum price and bid price are on a per ton basis. Unless otherwise specified, the price applies to all species, green and dead. Price may vary by product. Billing will be based on gross weight. A weight ticket from a certified scale is required for each load hauled, regardless of product type.
9. The State has estimated the net scale merchantable sawlog volume to be sold under this Contract. Other products may be part of this sale. All delivered wood will be weighed and billed at per ton bid rates. The State recognizes that a percentage of delivered wood may not meet the log manufacturing and recovery standards of the Timber Sale Contract. The actual percentage will vary based on the log manufacturing and recovery specifications of the purchaser and tree conditions in the sale area. The actual delivered weight may vary, resulting in an overrun or under-run of the estimated tonnage. The State strongly recommends that bidders evaluate these effects before bidding.
10. The State does not conduct detailed road appraisals. All appraised costs are gross estimates or averages, provided only to show the relative amount of work required, and not the true market value. The State strongly recommends that bidders make their own estimates based on Contract requirements. Cost estimates provided are not guaranteed.
11. Bidders are encouraged to examine the complete Timber Sale Package and Sale Area prior to bidding. Additional information is available at the phone numbers shown above.
12. Estimates for sale volume, species percents, defect, product class, etc. provided in this prospectus and volume estimates listed in the Timber Sale Contract are not guaranteed.
13. This prospectus is provided for information purposes only. If the prospectus is in error or contradicts the Timber Sale Contract, the Contract governs.

Additional Sale Information:

1. PURCHASER LEAVE TREE SELECTION: Purchaser will be required to designate leave and cut trees based on the following specifications:
 - a) Old Growth Restoration: Unit 4
Select favored species for leave trees on a 20-25 foot spacing. Leave approximately 75-100 dominant trees per acre.
 - Retain a minimum of 8 trees per acre with a DBH of 21 inches or greater.
 - Retain a minimum of 60 square feet of basal area consisting of multiple species, size classes, and canopy layers.
 - Favor retention of western larch, ponderosa pine, and Douglas-fir.
 - Remove trees infected with dwarf mistletoe, insects, or stem/root rots. Douglas fir bark beetles are the main concern.
 - Retain an average of 2 trees/acre of larger diameter size classes as snag recruits.
 - Retain a minimum of 2 large diameter (21 inches D.B.H or greater) snags per acre.
 - b) Commercial Thin: Units 5, 7
Select favored species for leave trees on a 20-25 foot spacing. Leave approximately 75-100 dominant trees per acre.
 - Favor retention of large diameter western larch, ponderosa pine, and Douglas-fir.
 - Remove trees infected with dwarf mistletoe, insects, or stem/root rots. Douglas fir bark beetles are the main concern.
 - Retain an average of 2 trees/acre of larger diameter size classes as snag recruits.
 - Retain a minimum of 2 large diameter (21 inches D.B.H or greater) snags per acre.
 - c) Shelterwood: Unit 3.
Select favored species for leave trees on a 35-40 foot spacing. Leave approximately 30-35 trees per acre.
 - Favor retention of large diameter western larch, ponderosa pine, and Douglas-fir.
 - Remove trees infected with dwarf mistletoe, insects, or stem/root rots. Douglas fir bark beetles are the main concern.
 - Retain an average of 2 trees/acre of larger diameter size classes as snag recruits.
 - Retain a minimum of 2 large diameter (21 inches D.B.H or greater) snags per acre.
2. OLD GROWTH RESTORATION HARVEST PRESCRIPTION (marked to cut) – Units 1, 2, and part of 3
 - Retain a minimum of 8 trees per acre with a DBH of 21 inches or greater.
 - Retain a minimum of 60 square feet of basal area consisting of multiple species, size classes, and canopy layers.
 - Favor retention of western larch, ponderosa pine, and Douglas-fir.
 - Remove trees infected with dwarf mistletoe, insects, or stem/root rots. Douglas fir bark beetles are the main concern.
 - Retain an average of 2 trees/acre of larger diameter size classes as snag recruits and 2 large diameter (21 inches D.B.H or greater) snags per acre.
3. GROUP SELECTION (marked to leave) – Unit 6
Inside group selection areas, remove all designated trees. Group selections will range from ½ acre to 1 acre in size. Outside group selection areas, harvest blowdown timber.
 - Retain an average of 2 trees/acre of larger diameter size classes as snag recruits
 - Retain a minimum of 2 large diameter (21 inches D.B.H or greater) snags per acre.
4. OPERATION AROUND HIGH VOLTAGE POWERLINES - A high voltage overhead powerline runs through Section 8. All harvest operations, with the exception of hauling, must be located outside of the cleared powerline right-of-way unless approved by the Forest Officer. Slash piles must be located outside of the powerline corridor.

ALL UNITS

5. HIGH HAZARD SLASH CLEANUP - All logging generated slash greater than 3" in diameter within 1 chain (66') from a private property line, lease lot boundary, powerline, highway right of way, or other open road will either be piled or removed.
6. OPERATION AROUND IMPROVEMENTS - Located in and around the harvest area are several improvements such as state lease cabins and outbuildings, overhead power/telephone lines, septic fields, and a highway. Use caution when operating around these improvements. Any damage caused by harvest operations or related activities will be repaired and paid for by the purchaser to the Forest Officer's satisfaction.
7. SLASHING OF LOGGING-DAMAGED TREES REQUIRED - The Purchaser shall fell all sub-merchantable trees with logging-related root or stem damage. The stem shall be completely severed from the stump below the lowest live limb. Maximum stump height shall be 12 inches on the uphill side.
8. PROTECTION AND RETENTION OF SUB-MERCHANTABLE TREES: The Purchaser shall retain and protect trees not meeting the cutting specifications in Table 2 due to size or defect to the greatest extent practical. If damage is excessive as determined by the Forest Officer, operations may be suspended until suitable arrangements are made to reduce damage.

Timber Sale Information Sheet
Montana Department of Natural Resources and Conservation

Ashley Schoolhouse											
Timber Sale Cruise Data (Scribner 5.6" top DIB, Filter: All All Cut)											
SPECIES	PP	DF	WL	LP	ES	GF	RC	AF	WP	Dead	TOTAL or AVE
Minimum Bid per ton											\$32.15
Pounds per cubic foot	62.0	61.7	58.3	56.0	57.0					40.0	
Estimated tons of sawlogs	976	10951	840	425	2275					324	15,790 tons
Estimated tons of non-sawlog material	6	128	27	21	35					1	216 tons
Gross MBF	184	1832	151	64	404					101	2,736 MBF
% Cull and Breakage	12.0	9.0	11.0	3.0	4.0					12.5	8.3%
Net MBF	162	1675	134	63	387					89	2,509 MBF
Average logs per MBF	14.0	18.7	23.9	27.7	18.1					10.3	18.5 logs/MBF
Average DBH	15.8	13.3	10.7	9.4	12.2					21.3	12.9 in.
Average tons to cut per acre	→										34 tons/ac
Average MBF to cut per acre	→										5.4 MBF/ac
Total Average TPA Cut	→										47
Calculated Sampling Error: Total cruised volume will fall between	2,253 and 2,766 Net MBF in 9 out of 10 cruises										10.2%
Tons Per Thousand Board Feet											
Conversion Factor - Estimated tons hauled per thousand Scribner board feet	15,790 estimated tons / 2,509 Net MBF										6.29 tons/MBF

Contract Information	
Contract Termination Date:	10/31/2026
Operating Period:	Year round as soil conditions allow, except in Unit 6, for which the operating period is only during dry, frozen, or snow covered soil conditions.

Timber Sale Information Sheet
Montana Department of Natural Resources and Conservation

Logging Information	
% of volume logged by clearcut or seed tree cut	00%
% of volume logged with tractors	100%
% of volume logged by skyline	00%
% of volume logged by other system (specify)	00%
Yarding distance tractor (average)	500 ft.
Yarding distance skyline (average)	0 ft.
Yarding distance other system (specify)	0 ft.
Estimated haul distance (paved)	20.0 miles
Estimated haul distance (unpaved)	1.0 miles

Purchaser fees and estimated costs	
Forest Improvement fee perMBF	\$26.60/MBF
Forest Improvement fee per ton	\$4.23/ton
Forest Improvement fee estimated total	\$66,791.70
Forest Improvement fee quarterly installment	\$11,131.95
Estimated Purchaser-do FI total \$	\$0
Estimated Purchaser-do FI per ton	\$0.00/ton
Estimated Purchaser-do slash disposal work total	\$0.00
Estimated Purchaser-do slash disposal work per ton	\$0.00/ton

Road development and maintenance fees and estimates	
Estimated road development cost total	\$30,756
Estimated road development cost per ton	\$1.95/ton
Estimated road development cost perMBF	\$12.26/MBF
Estimated Purchaser-do road maintenance cost total	\$3,586
Estimated Purchaser-do road maintenance cost per ton	\$0.23/ton
Miles of road construction	0.0 miles
Miles of road reconstruction	0.0 miles
Miles of road with site improvements	0.0 miles
Miles of road reclamation or abandonment	0.0 miles
Miles of road maintenance and blading	5.1 miles

Unit harvest volume				
Unit #	Acres	Est Tons	Est MBF	Harvest Deadline
Unit 1	128.75	2919	464	September 30, 2026
Unit 2	77.98	2730	433	September 30, 2026
Unit 3	11.06	618	99	September 30, 2026
Unit 4	155.83	6123	973	September 30, 2026
Unit 5	16.72	639	102	September 30, 2026
Unit 6	31.64	2002	318	September 30, 2026
Unit 7	45.59	759	121	September 30, 2026
				September 30, 2026
	468 Ac.	15,790 tons	2,509 MBF	







State Trust Land Vicinity Map

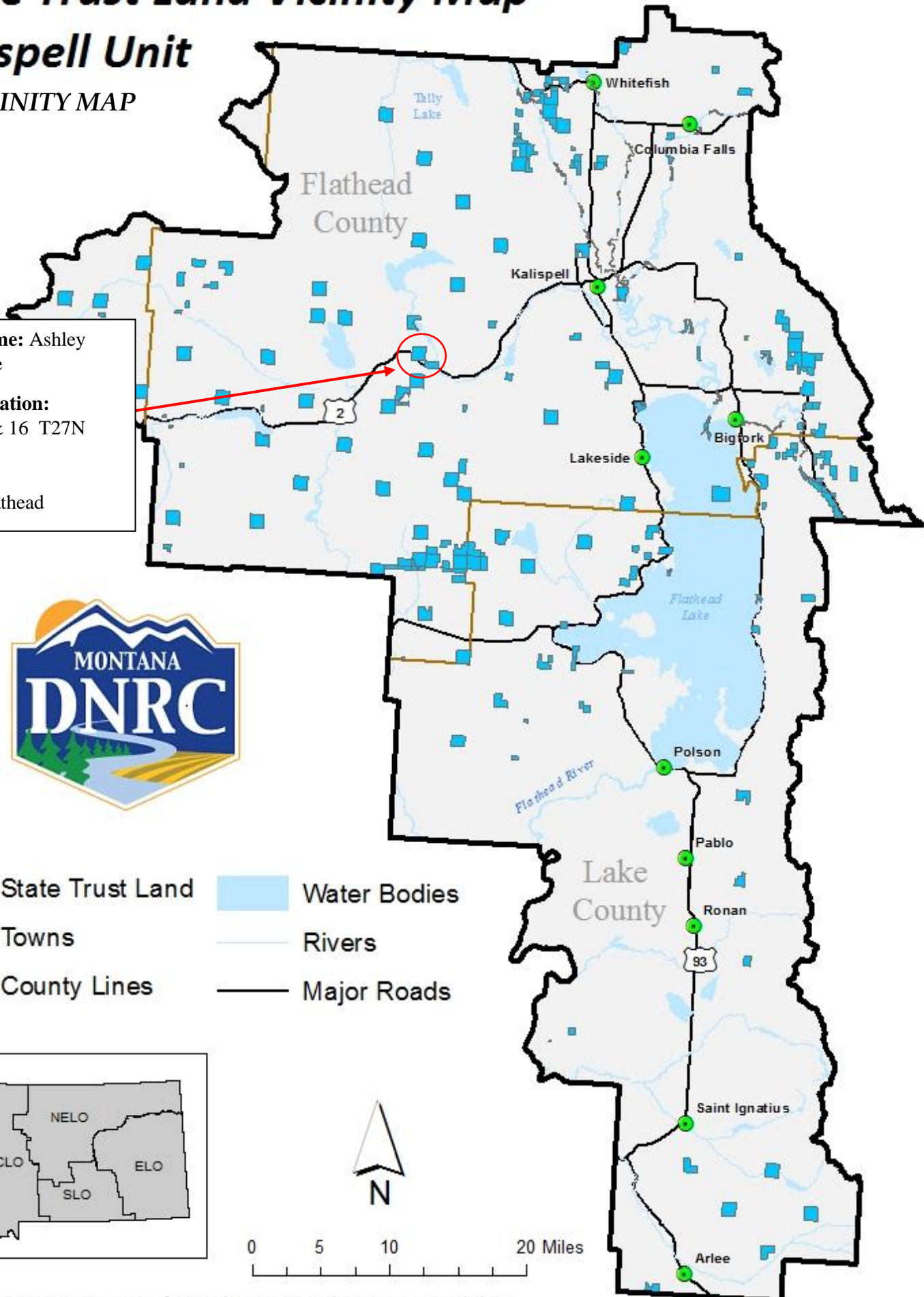
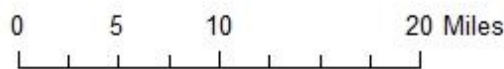
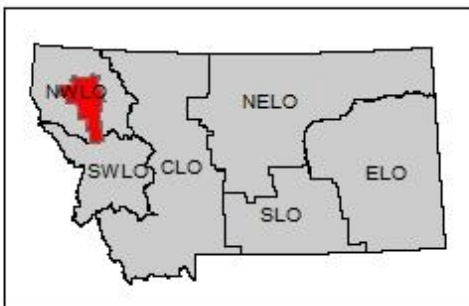
Kalispell Unit

VICINITY MAP

Project Name: Ashley Schoolhouse
Project Location: Sections 8 & 16 T27N R23W
County: Flathead

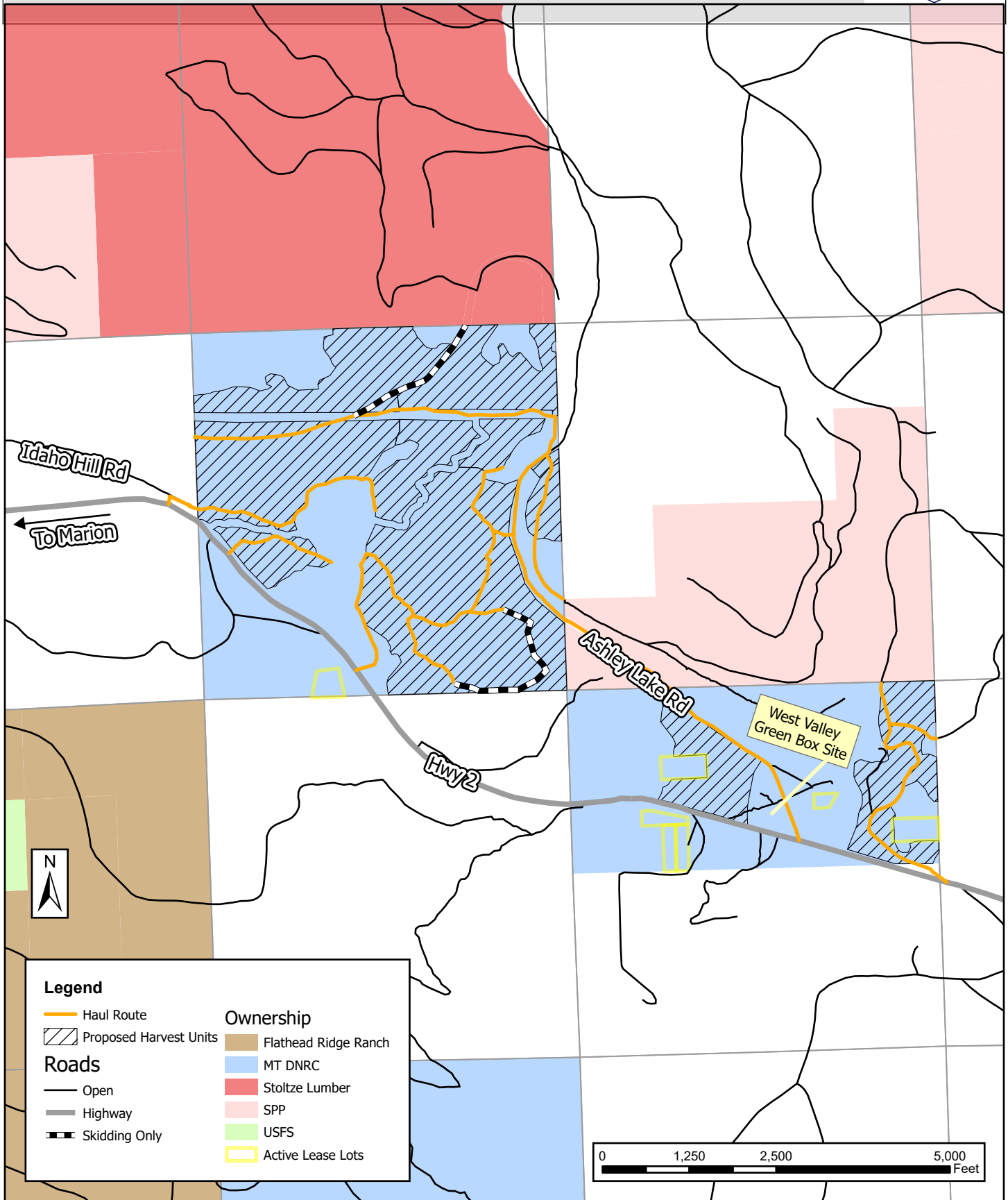


-  State Trust Land
-  Water Bodies
-  Towns
-  Rivers
-  County Lines
-  Major Roads



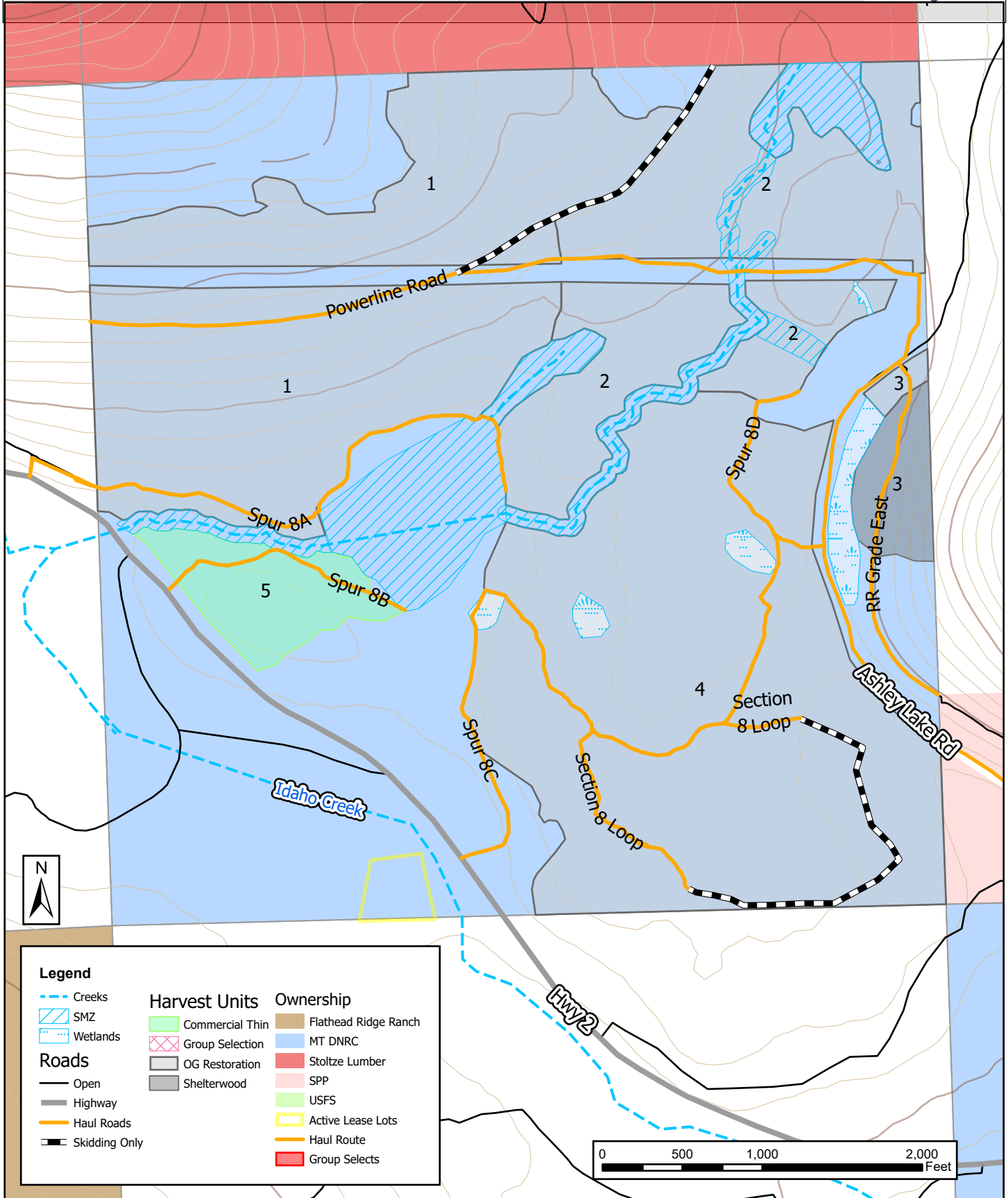
Ashley Schoolhouse Timber Sale Haul Map

S8 & 16 T27N R23W



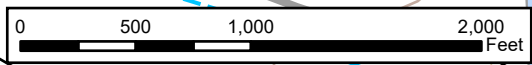
Ashley Schoolhouse Harvest Units

S8 T27N R23W



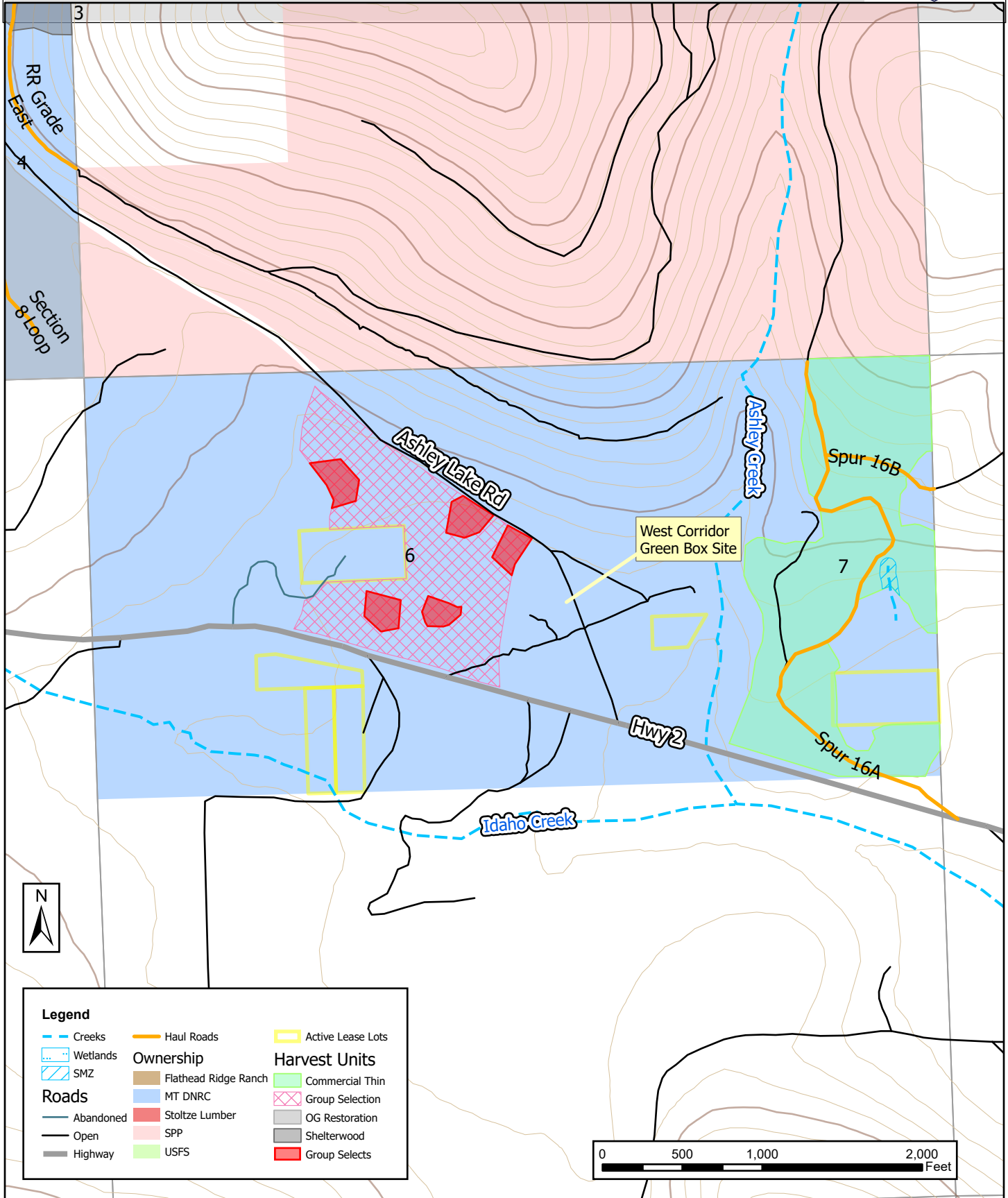
Legend

Creeks		Harvest Units		Ownership	
	Creeks		Commercial Thin		Flathead Ridge Ranch
	SMZ		Group Selection		MT DNRC
	Wetlands		OG Restoration		Stoltze Lumber
	Open		Shelterwood		SPP
	Highway		USFS		Active Lease Lots
	Haul Roads		Haul Route		Group Selects
	Skidding Only				



Ashley Schoolhouse Harvest Units

S16 T27N R23W



Legend		
Creeks	Haul Roads	Active Lease Lots
Wetlands	Ownership	Harvest Units
SMZ	Flathead Ridge Ranch	Commercial Thin
Roads	Stoltze Lumber	Group Selection
Abandoned	SPP	OG Restoration
Open	USFS	Shelterwood
Highway		Group Selects

