

NOTICE OF SALE

Department of Natural Resources & Conservation Timber Sale

The Chimney Line Timber Sale is located within Sections 14, 16 & 22, T11N-R11W on the State's Anaconda Unit. Approximately 6,631 tons, consisting primarily of Douglas-fir sawlogs, are offered for sale.

Sealed bids will be opened at the Department of Natural Resources & Conservation, 2705 Spurgin Road, Missoula, Montana on **November 7, 2024 at 2:00 p.m.** Bids may be hand delivered or mailed and will be accepted any time prior to the bid opening. DNRC recommends that bidders contact the Trust Land Management Division (406-542-4300) prior to the bid opening to ensure that your bid has been received. **Bids must be accompanied by a deposit of \$2,449.00**, representing 5% of the minimum bid value of the sale in cashier's check, certified check, bank money order or bank draft to be applied to the first sale invoice for the successful bidder. Bid bonds will be accepted and, for the successful bidder, will be closed upon execution of the Timber Sale Contract and Timber Sale Bond.

The sale will be awarded to the highest responsible bidder. Award of the timber sale is conditional upon approval of the timber sale by the State Board of Land Commissioners at their October 21, 2024 meeting. If the successful bidder is unable to execute the contract within **30** calendar days from the date the sale is awarded, the bid deposit will be retained by the Department as liquidated damages. The right is reserved to reject any or all bids.

Prospective bidders can obtain the sale prospectus, sale contract and bid forms from the Department of Natural Resources & Conservation, Trust Land Management Division, in Missoula (406-542-4300).

Visit our website at <http://dnrc.mt.gov/divisions/trust/forest-management/timber-sale-information> for upcoming sales and bid results.

TIMBER SALE PROSPECTUS
MONTANA DEPARTMENT OF NATURAL RESOURCES AND CONSERVATION

Timber Sale Name: Chimney Line			
Timber Sale Location: Sections 14, 16 and 22 T11N R11W			
For specific sale information, contact: Sam Whitney			
Phone	406-542-5810	Missoula Field Office	
For copies of the Timber Sale Contract and bid forms, contact:			
Phone	406-542-4300	Forest Management Bureau	DNRC Missoula Office
Phone	406-542-4200	Southwestern Land Office	Missoula Office

General Bidding Information

1. Bids must be submitted on standard Department of Natural Resources & Conservation (Dept) bid forms.
2. Timber will be sold to the highest responsible bidder; however, the Dept reserves the right to reject any or all bids.
3. The Dept recommends that bidders contact the Forest Management Bureau, Trust Land Management Division (542-4300) prior to the bid opening to ensure that your bid has been received.
4. A **Bid Guarantee** must accompany all bids and must be in the form of cash, cashiers check, certified check, money order, bank draft, surety bond or irrevocable letter of credit.
5. The Purchaser must submit a **Performance Bond** to the Dept within a maximum of **30** days of notification of sale award. The bond amount will be, at a minimum, **15%** of the total bid value of the sale. The performance bond may be in the form of cash, irrevocable letter of credit, surety bond or certificate of deposit. The performance bond must be maintained separately from other payments for the duration of the sale contract. See the Timber Sale Contract for additional information.
6. The purchaser must submit an **Advance Stumpage Payment** prior to cutting any timber. The amount of the advance stumpage payment will be based on the expected harvest rate and the bid value of the stumpage. The advance stumpage payment may be in the form of cash, irrevocable letter of credit, payment bond or certificate of deposit.
7. At rates specified in the Contract, the purchaser will pay **Forest Improvement Fees** on all sawlog volume. All applicable **Road Use and/or Maintenance fees** will also be paid by the Purchaser in addition to stumpage payments.
8. This sale is being sold based on the gross weight of all species. Minimum price and bid price are on a per ton basis. Unless specified, the price applies to all species, green and dead. Price may vary by product. Billing will be based on gross weight. A weight ticket from a certified scale is required for each load hauled, regardless of product type.
9. The Dept has estimated the net scale merchantable sawlog volume to be available for purchase under this contract. Other products may be part of this sale. All delivered wood will be weighed and billed at per ton bid rates. The Dept recognizes that a percentage of delivered wood may not meet the log manufacturing and recovery standards of the timber sale contract. The actual percentage will vary based on the log manufacturing and recovery specifications of the purchaser and tree conditions in the sale area. The actual delivered weight may vary, resulting in an overrun or under-run of the estimated tonnage. The Dept strongly recommends that bidders evaluate these effects before bidding.
10. The Dept does not conduct detailed road appraisals. All appraised costs are gross estimates or averages, provided only to show the relative amount of work required, and not the true market value. The Dept strongly recommends that bidders make their own estimates based on contract requirements. Cost estimates provided are not guaranteed.
11. Bidders are encouraged to examine the complete Timber Sale Package and Sale Area prior to bidding. Additional information is available at the phone numbers shown above.
12. Estimates for sale volume, species percents, defect, product class, etc. provided in this prospectus and volume estimates listed in the sale contract are not guaranteed.
13. This prospectus is provided for information purposes only. If the prospectus is in error or contradicts the Timber Sale Contract, the contract governs.

Additional Sale Information:

- Pulp and firewood are optional to cut/haul at \$0.50 per ton.
- All harvest units must be completed by October 15, 2027.
- Disregard black, blue or old paint.
- Access is through private land and **potential bidders need to contact Sam Whitney at 406-207-1235** for the combination lock.
- **ALTERNATE YARDING SYSTEMS MAY BE APPROVED:** The Forest Officer may approve alternative yarding methods besides those specified for each sale unit. An alternative system proposed by the Purchaser must be approved by the Forest Officer at or before the time the Logging Operations Plan for the unit is approved. The Forest Officer will only approve alternatives that are consistent with planned mitigation and resource protection measures. Alternatives may include alternative ground-based equipment or other systems. Costs of alternative systems will be borne by the Purchaser.

Timber Sale Information Sheet
Montana Department of Natural Resources and Conservation

Chimney Line												
Timber Sale Cruise Data (Scribner 5.6" top DIB, Filter: All All Cut)												
SPECIES	PP	DF	WL	LP	ES	GF	RC	AF	WP	WH	Dead	TOTAL or AVE
Minimum Bid per ton												\$7.39
Pounds per cubic foot		54.0		56.0							40.0	
Estimated CF		303768.4		760.3							9546.0	314,075 CF
Estimated CF of non-sawlog material		4431.2		26.7							15.9	4,474 CF
Estimated tons of sawlogs		6550		11							70	6,631 tons
Estimated tons of non-sawlog material		101		0							0	102 tons
Gross MBF		1089		2							44	1,134 MBF
% Cull and Breakage		20.7		50.0							62.6	22.4%
Net MBF		863		1							16	881 MBF
Average logs per MBF		29.1		135.8							24.6	29.1 logs/MBF
Average DBH		12.4		10.0							23.8	12.5 in.
Average tons to cut per acre												25 tons/ac
Average MBF to cut per acre												3.3 MBF/ac
Total Average TPA Cut												71
Calculated Sampling Error: Total cruised volume will fall between	747 and 1,014 Net MBF in 9 out of 10 cruises										15.2%	
Tons Per Thousand Board Feet												
Conversion Factor - Estimated tons hauled per thousand Scribner board feet	6,631 estimated tons / 881 Net MBF											7.53 tons/MBF

Contract Information		
Contract Termination Date:	11/15/2027	
Operating Period:	June 15th to March 1st, Depending on soil moisture.	

Logging Information	
% of volume logged by clearcut or seed tree cut	00%
% of volume logged with tractors	00%
% of volume logged by skyline	100%
% of volume logged by other system (specify)	00%
Yarding distance tractor (average)	0 ft.

Road development and maintenance fees and estimates	
Estimated road development cost total	\$13,399
Estimated road development cost per ton	\$2.02/ton
Estimated road development cost perMBF	\$15.22/MBF
Estimated Purchaser-do road maintenance cost total	\$0

Timber Sale Information Sheet
Montana Department of Natural Resources and Conservation

Yarding distance skyline (average)	600 ft.
Yarding distance other system (specify)	0 ft.
Estimated haul distance (paved)	20.0 miles
Estimated haul distance (unpaved)	12.0 miles

Purchaser fees and estimated costs	
Forest Improvement fee perMBF	\$21.75/MBF
Forest Improvement fee per ton	\$2.89/ton
Forest Improvement fee estimated total	\$19,163.59
Forest Improvement fee quarterly installment	\$3,193.93
Estimated Purchaser-do FI total \$	\$6,700
Estimated Purchaser-do FI per ton	\$1.01/ton
Estimated Purchaser-do slash disposal work total	\$0.00
Estimated Purchaser-do slash disposal work per ton	\$0.00/ton

Estimated Purchaser-do road maintenance cost per ton	\$0.00/ton
Private road maintenance charges per ton	\$0.00/ton
USFS road maintenance charges per ton	\$0.00/ton
Miles of road construction	0.0 miles
Miles of road reconstruction	0.0 miles
Miles of road with site improvements	0.0 miles
Miles of road reclamation or abandonment	0.0 miles
Miles of road maintenance and blading	24.8 miles

Unit harvest volume				
Unit #	Acres	Est Tons	Est MBF	Harvest Deadline
Unit 1404	6.89	66	9	October 15, 2027
Unit 2202	36.87	1542	205	October 15, 2027
Unit 1401	74.00	1209	161	October 15, 2027
Unit 1402	9.62	367	49	October 15, 2027
Unit 2203	16.23	367	49	October 15, 2027
Unit 1403	7.19	205	27	October 15, 2027
Unit 2201	30.73	701	93	October 15, 2027
Unit 1603	13.49	256	34	October 15, 2027
Unit 1601	39.44	715	95	October 15, 2027
Unit 1602	33.79	1203	160	October 15, 2027
	268 Ac.	6,631 tons	881 MBF	

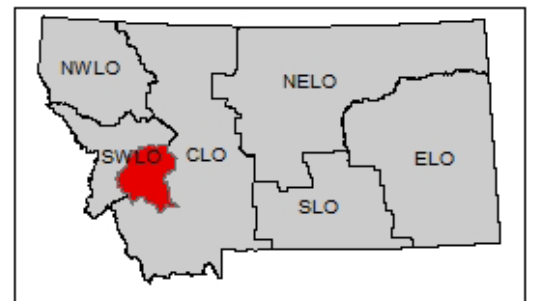
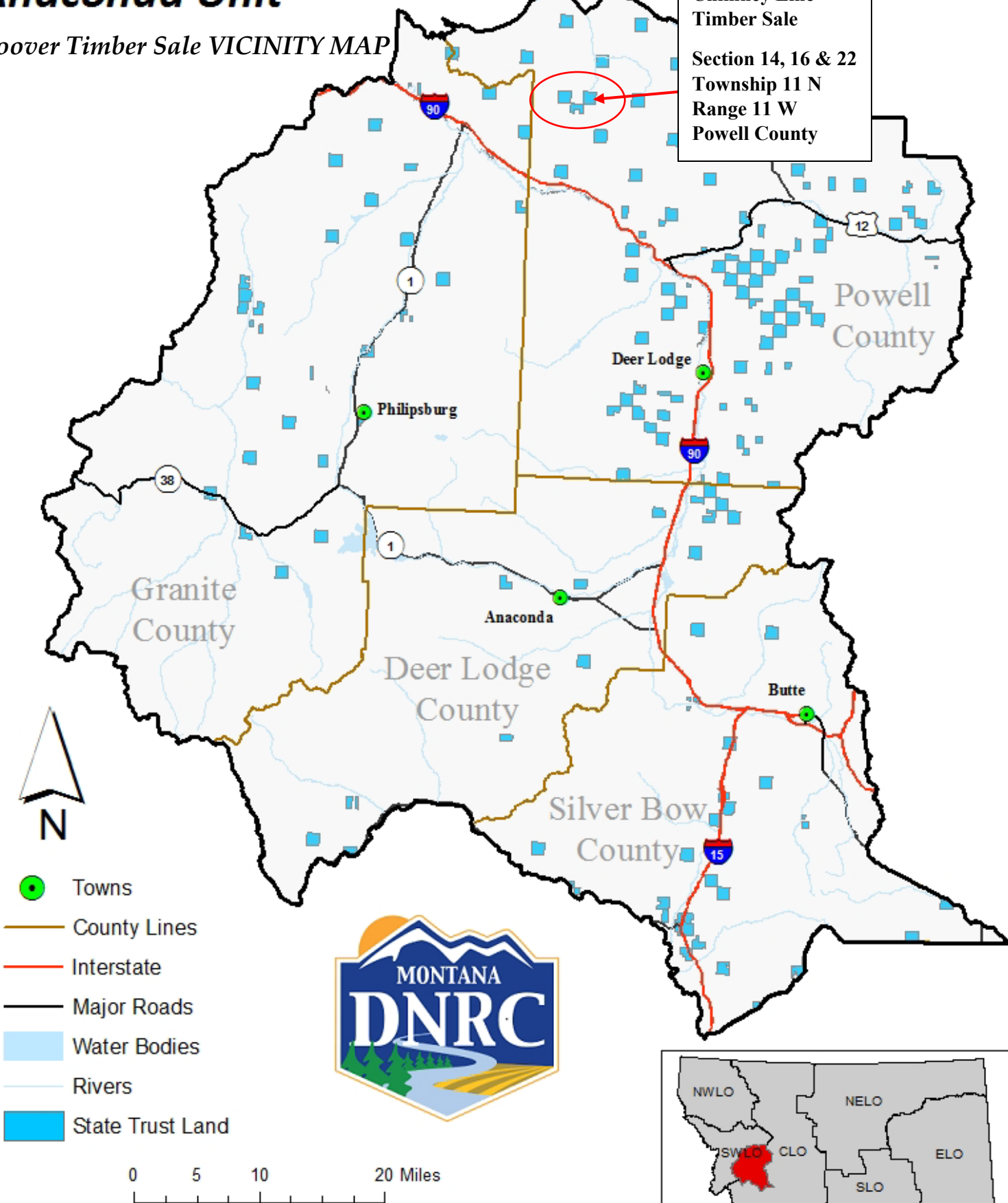
State Trust Land Vicinity Map

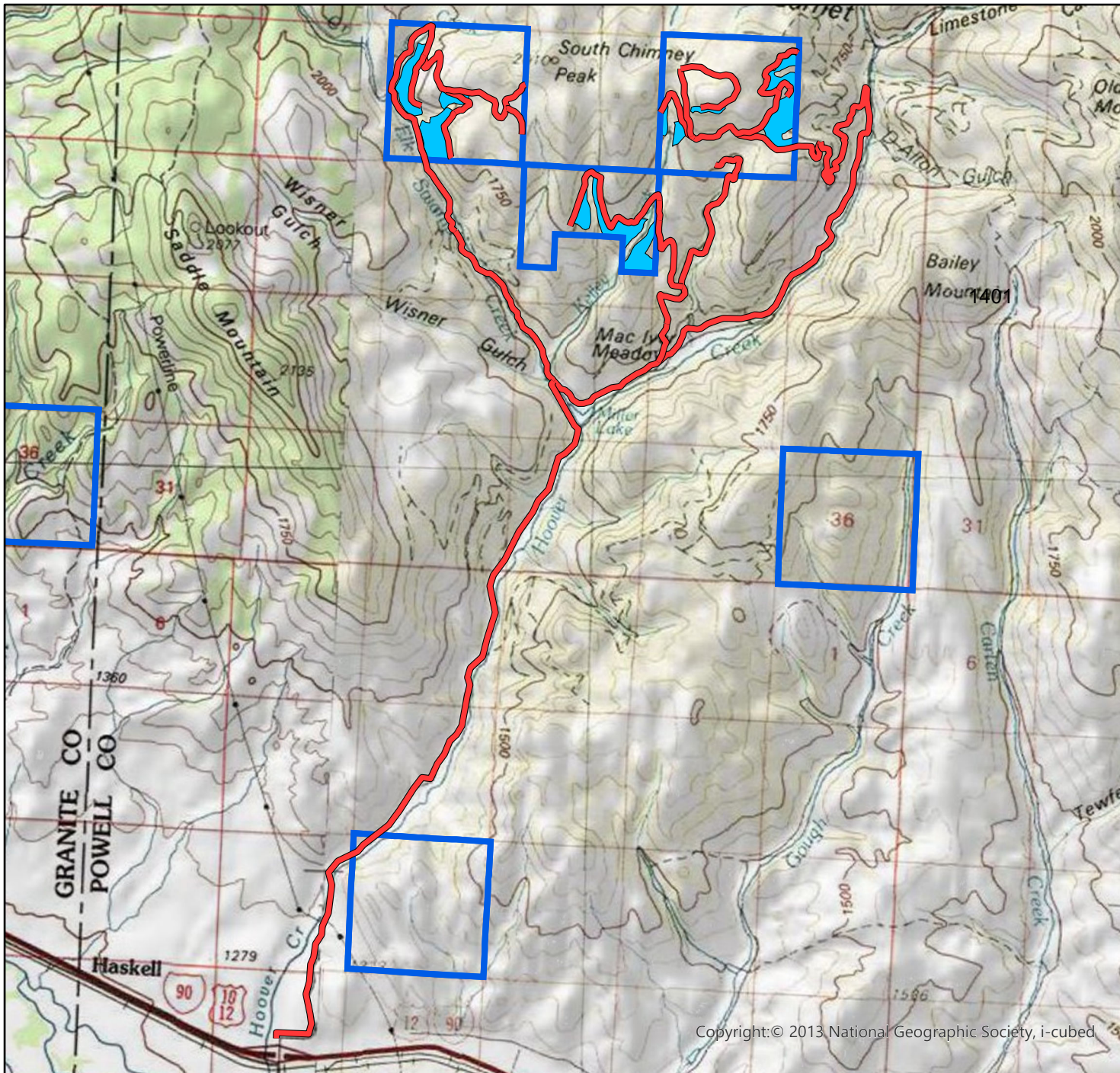
Anaconda Unit

Hoover Timber Sale VICINITY MAP

Chimney Line
Timber Sale

Section 14, 16 & 22
Township 11 N
Range 11 W
Powell County





Chimney Line Timber Sale

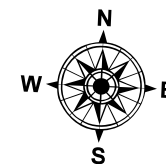
Sections 14, 16, & 22 T11N R11W

Attachment A



Legend

- Hoover Haul Roads
- Harvest Units



Copyright: © 2013 National Geographic Society, i-cubed

S.Whitney 2024


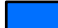
Chimney Line Timber Sale

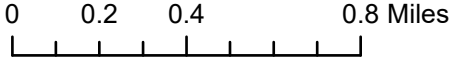
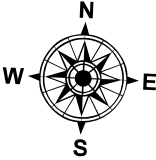
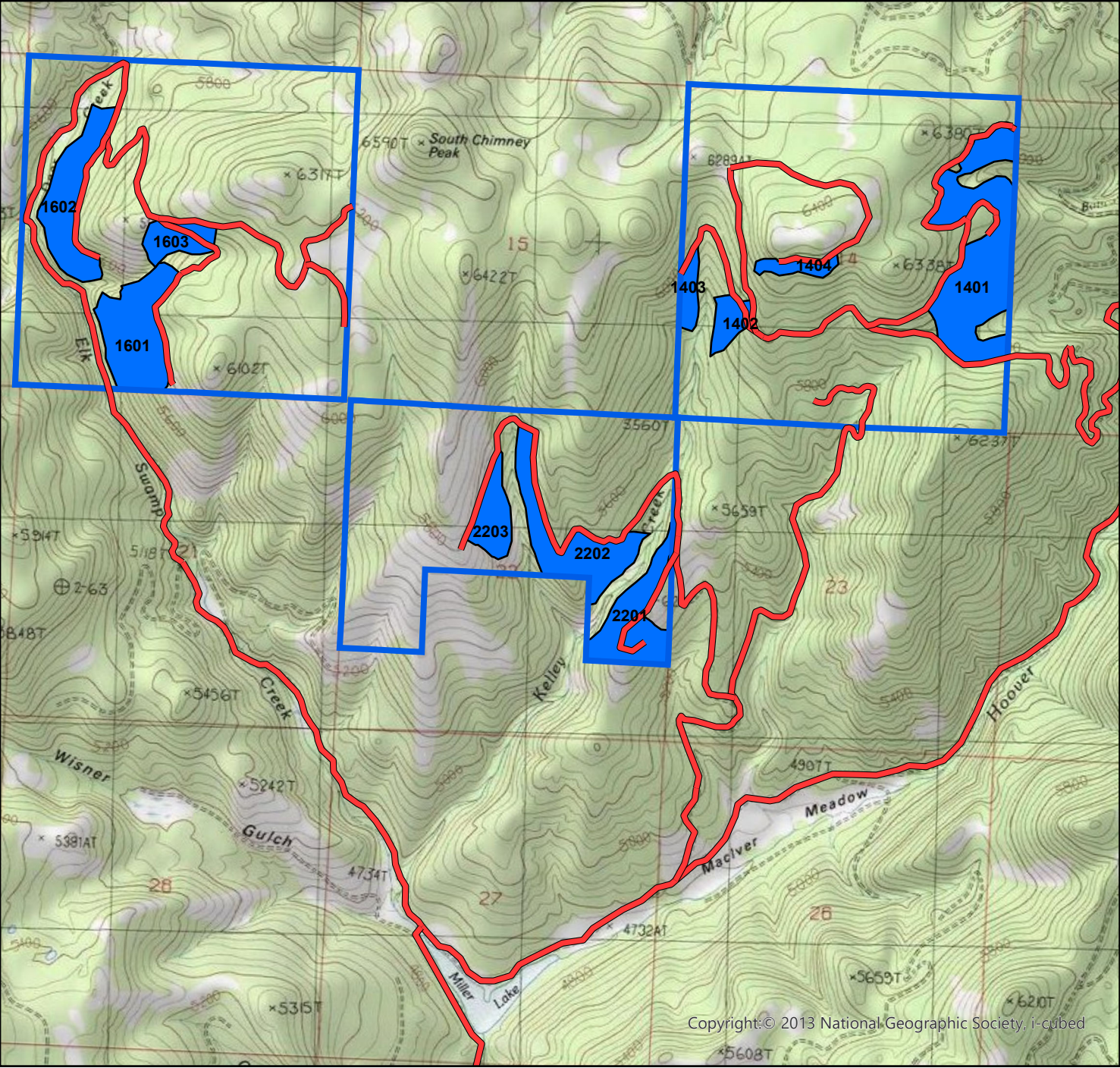
Sections 14, 16 & 22 T11N R11W

Attachment A-2



Legend

-  Hoover Haul Roads
-  Harvest Units



Copyright © 2013 National Geographic Society, i-cubed

Chimney Line Timber Sale

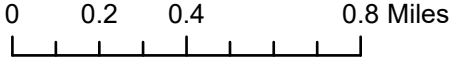
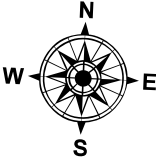
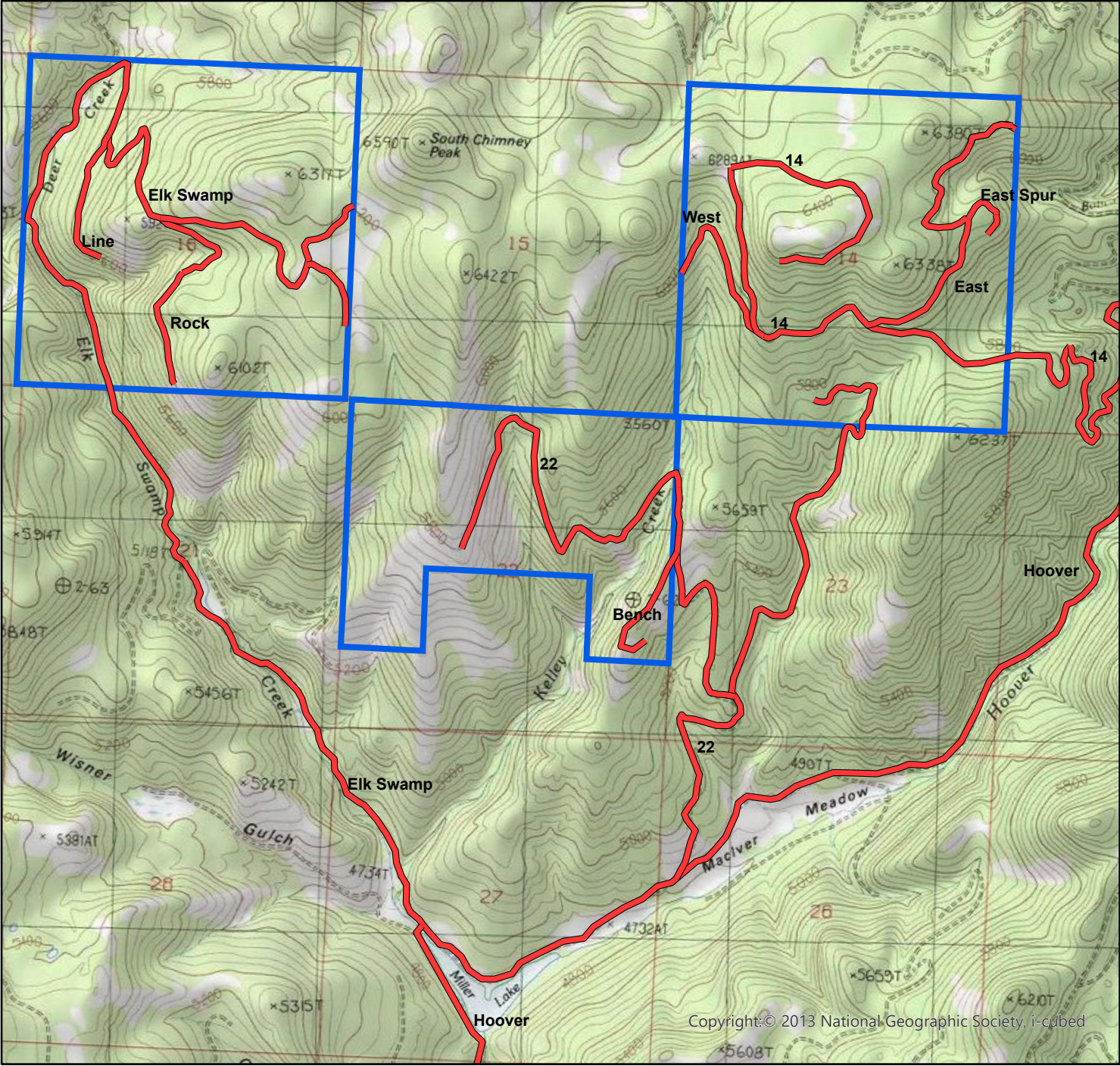
Sections 14, 16 & 22 T11N R11W

Attachment A-3



Legend

 Hoover Haul Roads



Copyright © 2013 National Geographic Society, i-cubed