

NOTICE OF SALE

Department of Natural Resources & Conservation Timber Sale

The Rad Dog Timber Sale is located within Sections 29,30, and 32 of T33N-R23W & Sections 14,15,16,24, and 25 of T33N-R24W on the State's Stillwater Unit. Approximately 15,520 tons, consisting of mixed conifer sawlogs, are offered for sale.

Sealed bids will be opened at the Department of Natural Resources & Conservation, 2705 Spurgin Road, Missoula, Montana on **March 18, 2025 at 2:00 p.m.** Bids may be hand delivered or mailed and will be accepted any time prior to the bid opening. DNRC recommends that bidders contact the Trust Land Management Division (406-542-4310) prior to the bid opening to ensure that your bid has been received. **Bids must be accompanied by a deposit of \$13,235.51**, representing 5% of the minimum bid value of the sale in cashier's check, certified check, bank money order or bank draft to be applied to the first sale invoice for the successful bidder. Bid bonds will be accepted and, for the successful bidder, will be closed upon execution of the Timber Sale Contract and Timber Sale Bond.

The sale will be awarded to the highest responsible bidder. If the successful bidder is unable to execute the contract within **30** calendar days from the date the sale is awarded, the bid deposit will be retained by the Department as liquidated damages. The right is reserved to reject any or all bids.

Prospective bidders can obtain the sale prospectus, sale contract and bid forms from the Department of Natural Resources & Conservation, Trust Land Management Division, in Missoula (406-542-4310).

Visit our website at <http://dnrc.mt.gov/divisions/trust/forest-management/timber-sale-information> for upcoming sales and bid results.

TIMBER SALE PROSPECTUS
STATE OF MONTANA DEPARTMENT OF NATURAL RESOURCES AND CONSERVATION

Timber Sale Name: Rad Dog			
For specific sale information, contact: Joe Rizzi			
Phone	406-881-2675	Unit Office: Stillwater	
For copies of the Timber Sale Contract and bid forms, contact:			
Phone	406-542-4300	Forest Management Bureau	DNRC Missoula Office
Phone	406-751-2240	Northwestern	Land Office

General Bidding Information

1. Bids must be submitted on Department of Natural Resources & Conservation (State) bid forms.
2. Timber will be sold to the highest responsible bidder; however, the State reserves the right to reject any or all bids.
3. The State recommends that bidders contact the Forest Management Bureau, Trust Land Management Division (406-542-4300) prior to the bid opening to ensure that your bid has been received.
4. A **Bid Deposit** must accompany all bids and must be in the form of cash, cashiers check, certified check, money order, bank draft, surety bond or irrevocable letter of credit.
5. The Purchaser must submit a **Performance Bond** to the State within 30 days of notification of sale award. The bond amount will be, at a minimum, 20% of the total bid value of the sale. The performance bond may be cash, irrevocable letter of credit, surety bond or certificate of deposit. The performance bond must be maintained separately from other payments for the duration of the Timber Sale Contract. See the Timber Sale Contract for additional information.
6. The purchaser must submit an **Advance Stumpage Payment** prior to cutting any timber. The amount of the advance stumpage payment will cover six weeks of harvesting and be based on the expected harvest rate and the bid value of the stumpage. The advance stumpage payment may be cash, irrevocable letter of credit, payment bond or certificate of deposit.
7. At rates specified in the Contract, the purchaser will pay **Forest Improvement Fees** on all sawlog volume. All applicable **Road Use and/or Maintenance fees** will also be paid by the Purchaser in addition to stumpage payments.
8. This sale is being sold based on the gross weight of all species. Minimum price and bid price are on a per ton basis. Unless otherwise specified, the price applies to all species, green and dead. Price may vary by product. Billing will be based on gross weight. A weight ticket from a certified scale is required for each load hauled, regardless of product type.
9. The State has estimated the net scale merchantable sawlog volume to be sold under this Contract. Other products may be part of this sale. All delivered wood will be weighed and billed at per ton bid rates. The State recognizes that a percentage of delivered wood may not meet the log manufacturing and recovery standards of the Timber Sale Contract. The actual percentage will vary based on the log manufacturing and recovery specifications of the purchaser and tree conditions in the sale area. The actual delivered weight may vary, resulting in an overrun or under-run of the estimated tonnage. The State strongly recommends that bidders evaluate these effects before bidding.
10. The State does not conduct detailed road appraisals. All appraised costs are gross estimates or averages, provided only to show the relative amount of work required, and not the true market value. The State strongly recommends that bidders make their own estimates based on Contract requirements. Cost estimates provided are not guaranteed.
11. Bidders are encouraged to examine the complete Timber Sale Package and Sale Area prior to bidding. Additional information is available at the phone numbers shown above.
12. Estimates for sale volume, species percents, defect, product class, etc. provided in this prospectus and volume estimates listed in the Timber Sale Contract are not guaranteed.
13. This prospectus is provided for information purposes only. If the prospectus is in error or contradicts the Timber Sale Contract, the Contract governs.

Additional Sale Information:

1. A minimum of four (4) mobilizations will be required to access sale area.
2. Commercial winter recreation timing restriction for units 1-12. Harvesting activities will be restricted to June 16th – October 31st and all other forest management activities such as hauling, roadwork, and unit clean-up will be restricted to June 16th to November 30th.
3. Eagle timing restrictions in Unit 17, August 16 – January 31.
4. Mandatory roundwood/pulp removal for units 14-17.
5. Mandatory Cut-to-length for units 7 and 19.
6. About 60 acres of high hazard reduction piling will be required. Purchaser hazard reduction required in units 1, 2, 3, 4, 5, 6, 8, 9, 12, 13, 14, 15, 19, 20, and 21.
7. Timber felling adjacent to powerlines is required in units 1, 2, 3, 4, 5, 8, and 19.
8. Contact Stillwater Unit for current access status to sale.

Timber Sale Information Sheet
Montana Department of Natural Resources and Conservation

Rad Dog												
Timber Sale Cruise Data (Scribner 5.6" top DIB, Filter: All All Cut)												
SPECIES	PP	DF	WL	LP	ES	GF	RC	AF	WP	WH	Dead	TOTAL or AVE
Minimum Bid per ton												\$17.05
Pounds per cubic foot		61.7	58.3	56.0	57.0	60.0	44.0	55.0			40.0	
Estimated tons of sawlogs		2075	3067	3329	3764	102	914	2269			0	15,520 tons
Estimated tons of non-sawlog material		32	28	288	89	0	17	143			0	597 tons
Gross MBF		363	643	492	771	30	186	592			111	3,189 MBF
% Cull and Breakage		14.7	14.0	9.7	17.7	43.5	8.1	44.3			100.0	22.9%
Net MBF		310	553	445	634	17	171	330			0	2,460 MBF
Average logs per MBF		19.0	16.7	34.8	20.2	28.7	20.1	39.7			0.0	24.5 logs/MBF
Average DBH		12.9	14.0	8.1	11.5	15.5	12.3	9.1			10.4	10.0 in.
Average tons to cut per acre												37 tons/ac
Average MBF to cut per acre												5.9 MBF/ac
Total Average TPA Cut												134
Calculated Sampling Error: Total cruised volume will fall between	2,024 and 2,896 Net MBF in 9 out of 10 cruises											17.7%
Tons Per Thousand Board Feet												
Conversion Factor - Estimated tons hauled per thousand Scribner board feet	15,520 estimated tons / 2,460 Net MBF											6.31 tons/MBF

Contract Information	
Contract Termination Date:	11/30/2027
Operating Period:	June 16 - October 31 (unit 1-12), June 16 - March 31 (unit 13-16,18-21), August 16 - March 31 (unit 17); when soil condition allow

Timber Sale Information Sheet
Montana Department of Natural Resources and Conservation

Logging Information	
% of volume logged by clearcut or seed tree cut	55%
% of volume logged with tractors	92%
% of volume logged by skyline	00%
% of volume logged by Cut-to-length	08%
Yarding distance tractor (average)	600 ft.
Yarding distance skyline (average)	0 ft.
Yarding distance other system (specify)	300 ft.
Estimated haul distance (paved)	33.0 miles
Estimated haul distance (unpaved)	1.0 miles

Purchaser fees and estimated costs	
Forest Improvement fee perMBF	\$26.60/MBF
Forest Improvement fee per ton	\$4.22/ton
Forest Improvement fee estimated total	\$65,494.40
Forest Improvement fee quarterly installment	\$10,915.73
Estimated Purchaser-do FI total \$	\$0
Estimated Purchaser-do FI per ton	\$0.00/ton
Estimated Purchaser-do slash disposal work total	\$9,134.00
Estimated Purchaser-do slash disposal work per ton	\$0.59/ton

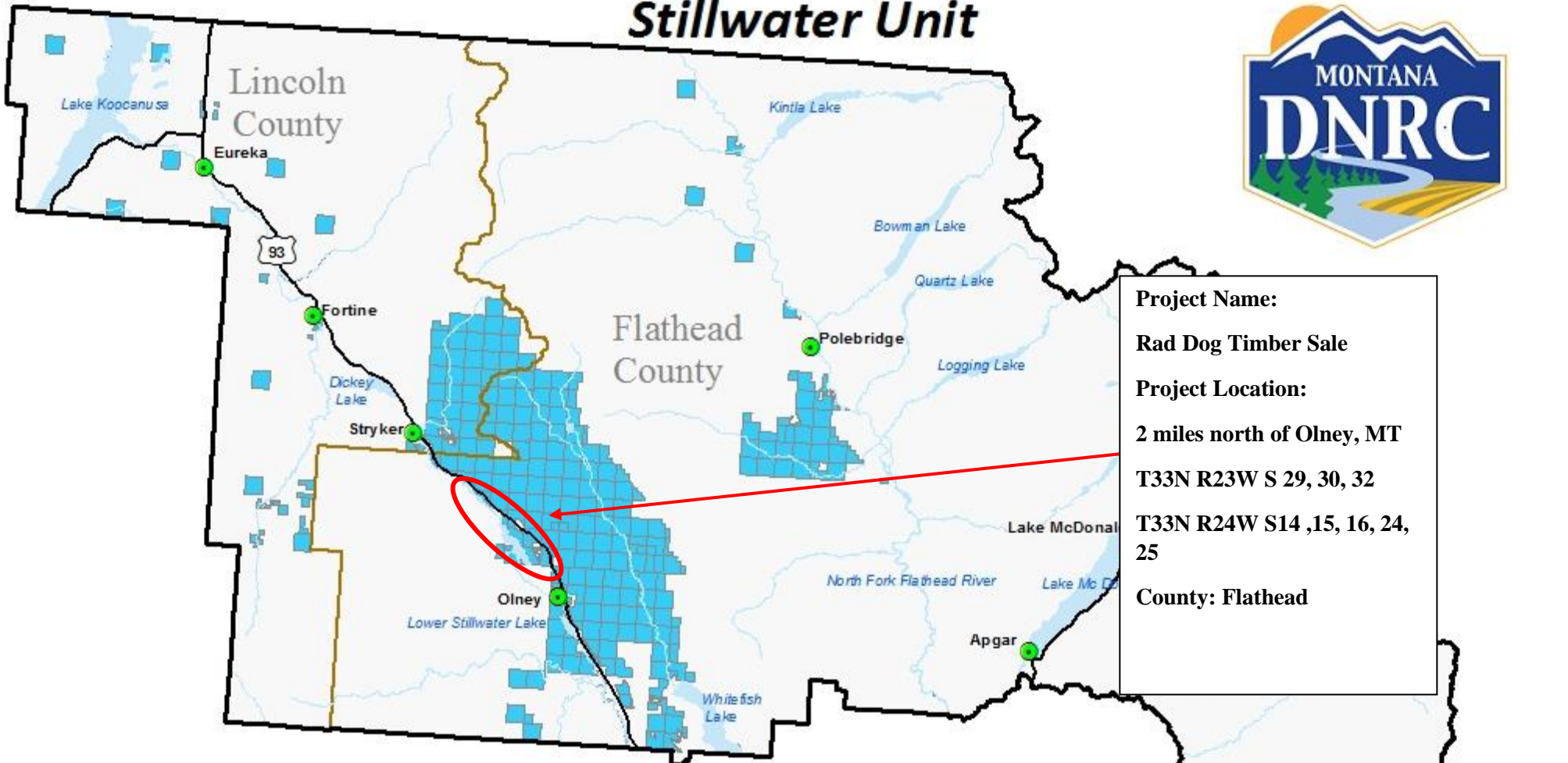
Road development and maintenance fees and estimates	
Estimated road development cost total	\$30,334
Estimated road development cost per ton	\$1.95/ton
Estimated road development cost perMBF	\$12.33/MBF
Estimated Purchaser-do road maintenance cost total	\$6,258
Estimated Purchaser-do road maintenance cost per ton	\$0.40/ton
Private road maintenance charges per ton	\$0.00/ton
USFS road maintenance charges per ton	\$0.00/ton
Miles of road construction	0.5 miles
Miles of road reconstruction	2.7 miles
Miles of road with site improvements	0.8 miles
Miles of road reclamation or abandonment	0.5 miles
Miles of road maintenance and blading	7.5 miles

Timber Sale Information Sheet
Montana Department of Natural Resources and Conservation

Unit harvest volume				
Unit #	Acres	Est Tons	Est MBF	Harvest Deadline
Cutting Unit 01	64	2376	377	October 31, 2027
Cutting Unit 02	8	79	13	October 31, 2027
Cutting Unit 03	6	701	111	October 31, 2027
Cutting Unit 04	12	474	75	October 31, 2027
Cutting Unit 05	17	924	146	October 31, 2027
Cutting Unit 06	11	1229	195	October 31, 2027
Cutting Unit 07	37	648	103	October 31, 2027
Cutting Unit 08	17	452	72	October 31, 2027
Cutting Unit 09	3	29	5	October 31, 2027
Cutting Unit 10	6	368	58	October 31, 2027
Cutting Unit 11	4	138	22	October 31, 2027
Cutting Unit 12	4	207	33	October 31, 2027
Cutting Unit 13	3	17	3	October 31, 2027
Cutting Unit 14	20	1179	187	October 31, 2027
Cutting Unit 15	11	800	127	October 31, 2027
Cutting Unit 16	7	192	30	October 31, 2027
Cutting Unit 17	49	2923	463	October 31, 2027
Cutting Unit 18	4	216	34	October 31, 2027
Cutting Unit 19	75	653	103	October 31, 2027
Cutting Unit 20	28	1723	273	October 31, 2027
Cutting Unit 21	5	193	31	October 31, 2027
	391 Ac.	15,520 tons	2,460 MBF	

State Trust Land Vicinity Map

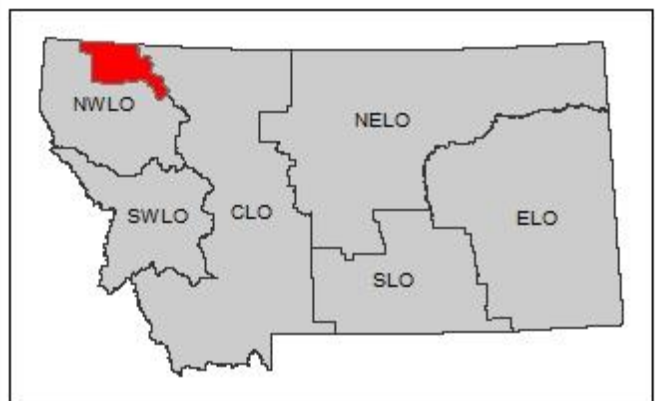
Stillwater Unit



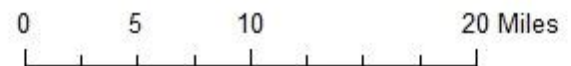
Project Name:
Rad Dog Timber Sale

Project Location:
 2 miles north of Olney, MT
 T33N R23W S 29, 30, 32
 T33N R24W S14, 15, 16, 24, 25
County: Flathead

RAD DOG TIMBER SALE VICINITY MAP



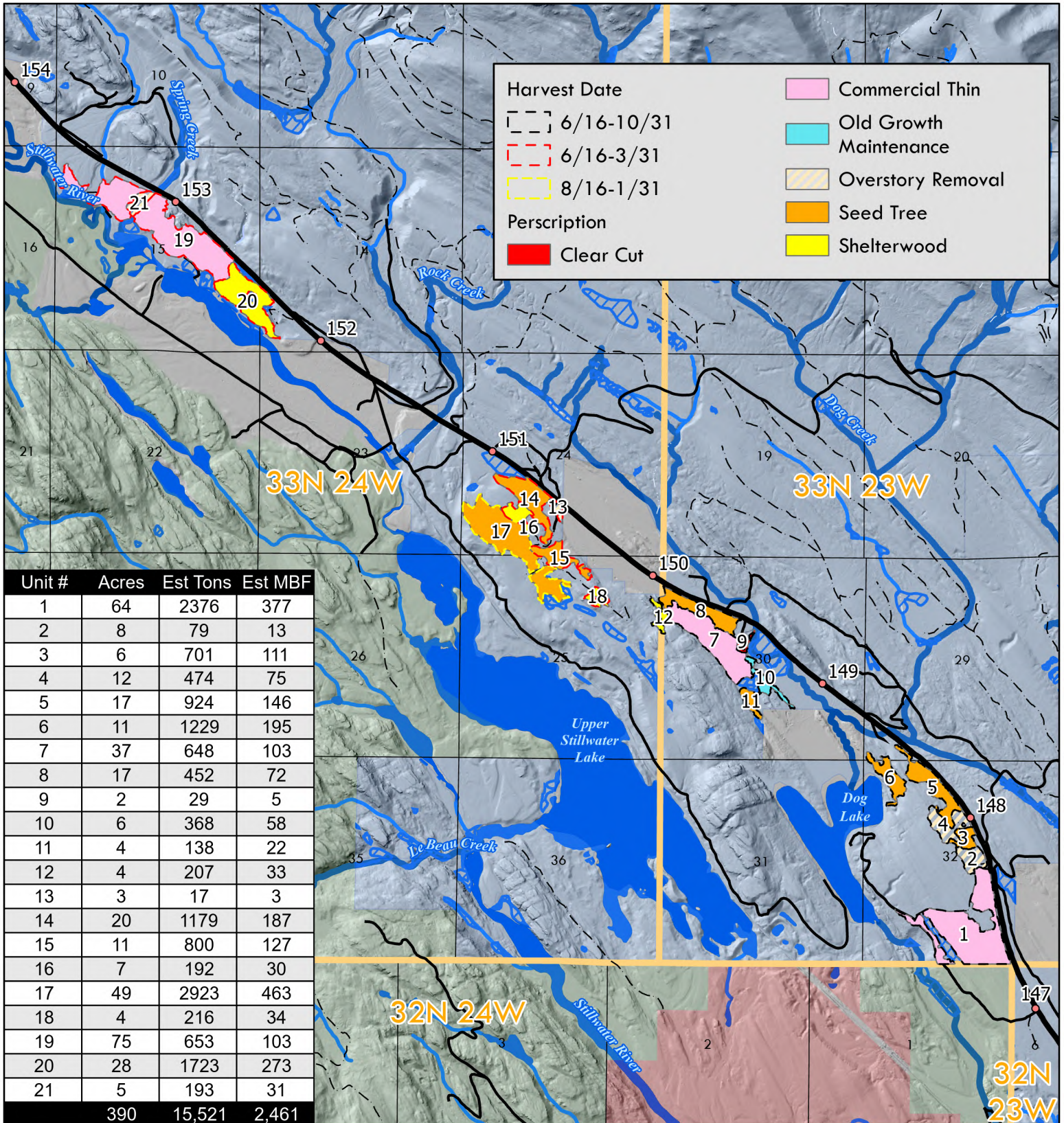
- Towns
- Major Roads
- Rivers
- County Lines
- Water Bodies
- State Trust Land



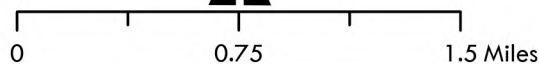
Rad Dog Timber Sale

T33N R23W S 29, 30, 32
T33N R24W S 14, 15, 16, 24, 25

Attachment A: Page 2 of 7



January 9, 2025



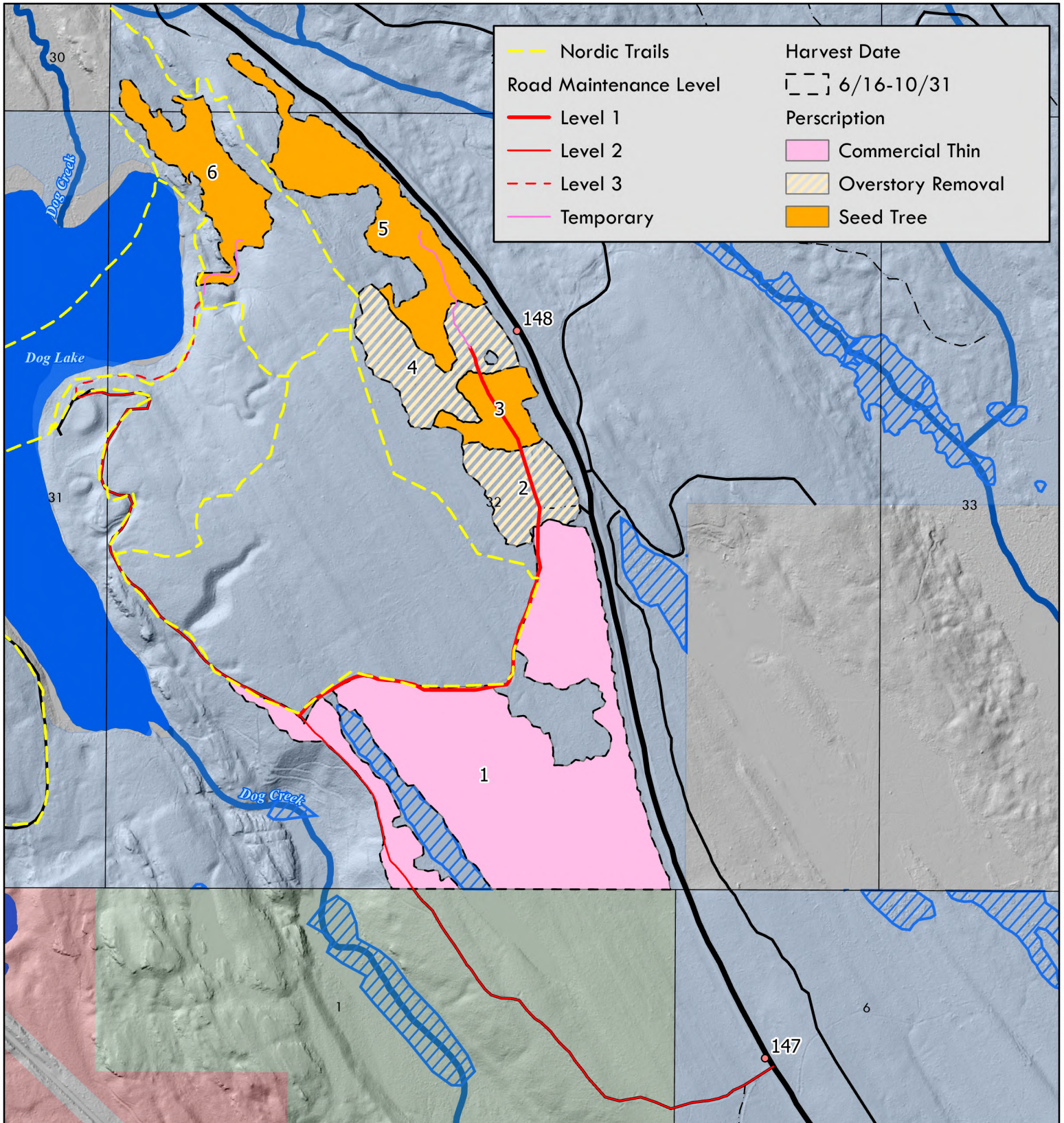
Joe Rizzi



Rad Dog Timber Sale

T33N R23W S 29, 32

Attachment A: Page 3 of 7



January 9, 2025



Joe Rizzi

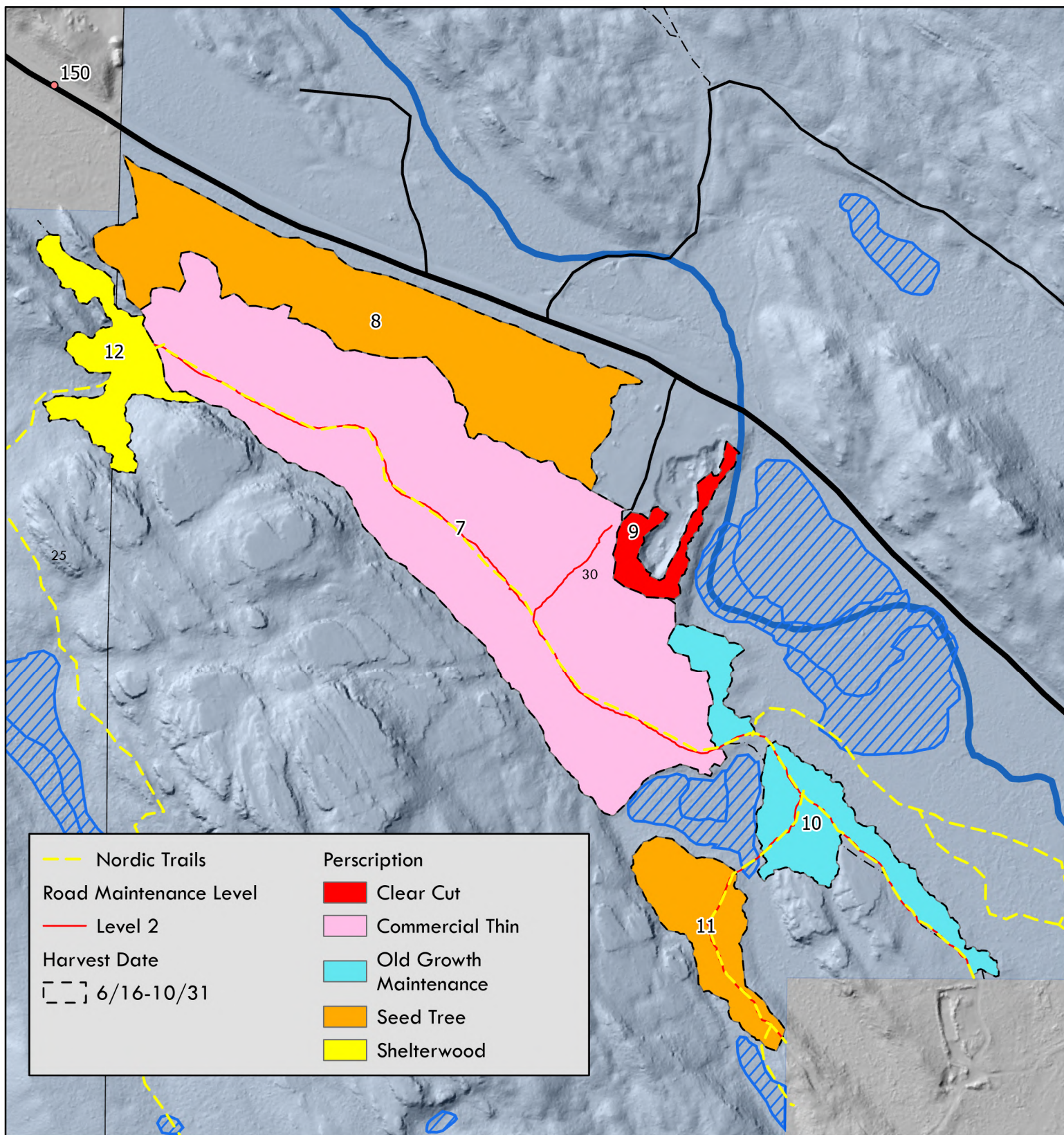
0 0.25 0.5 Miles



Rad Dog Timber Sale

T33N R23W S 30
T33N R24W S 25

Attachment A: Page 4 of 7



January 9, 2025



0 0.1 0.2 Miles

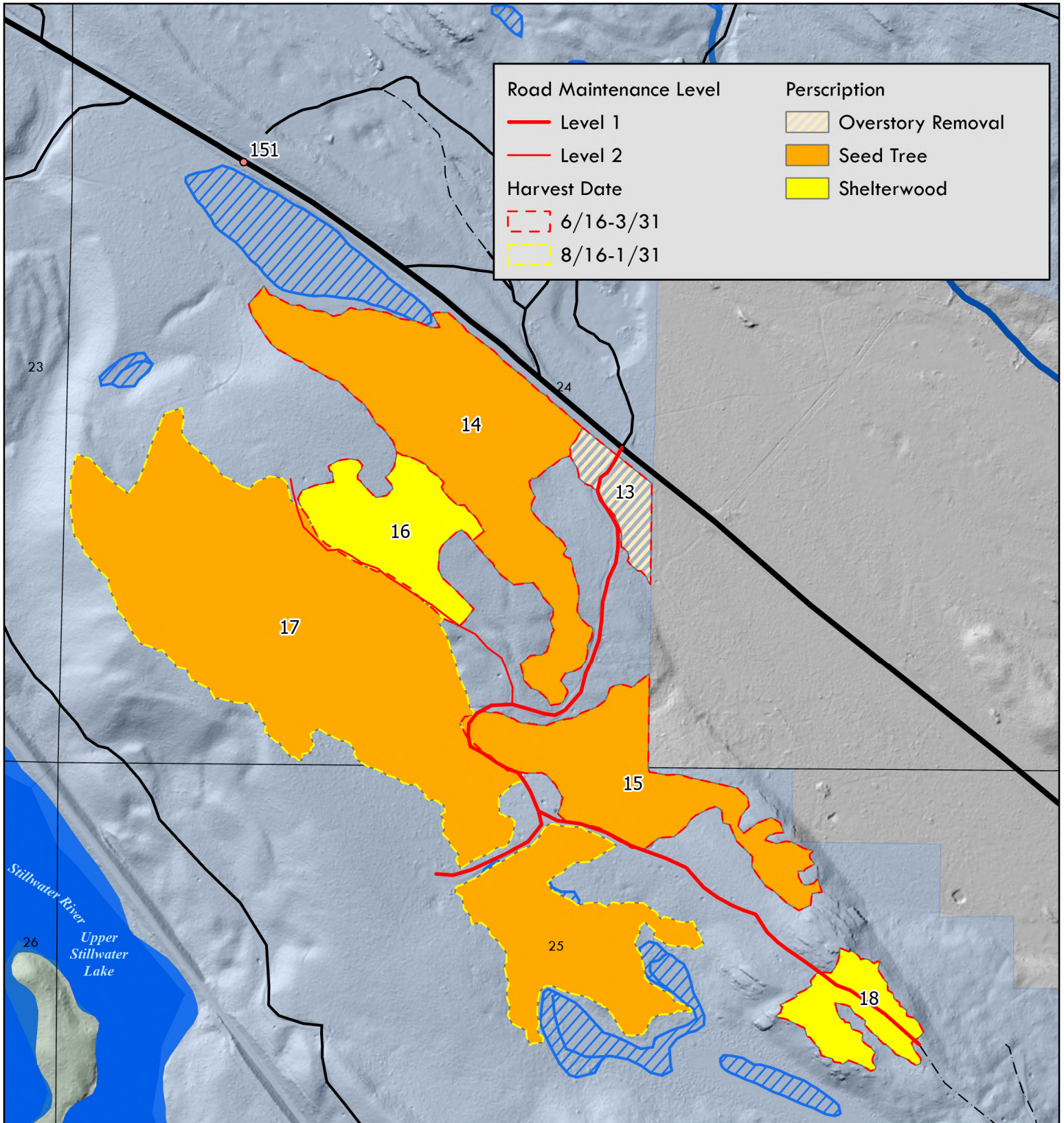
Joe Rizzi



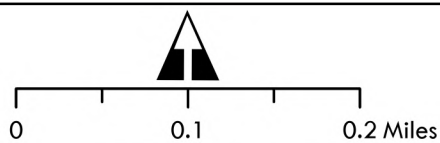
Rad Dog Timber Sale

T33N R24W S 24, 25

Attachment A: Page 5 of 7



January 9, 2025



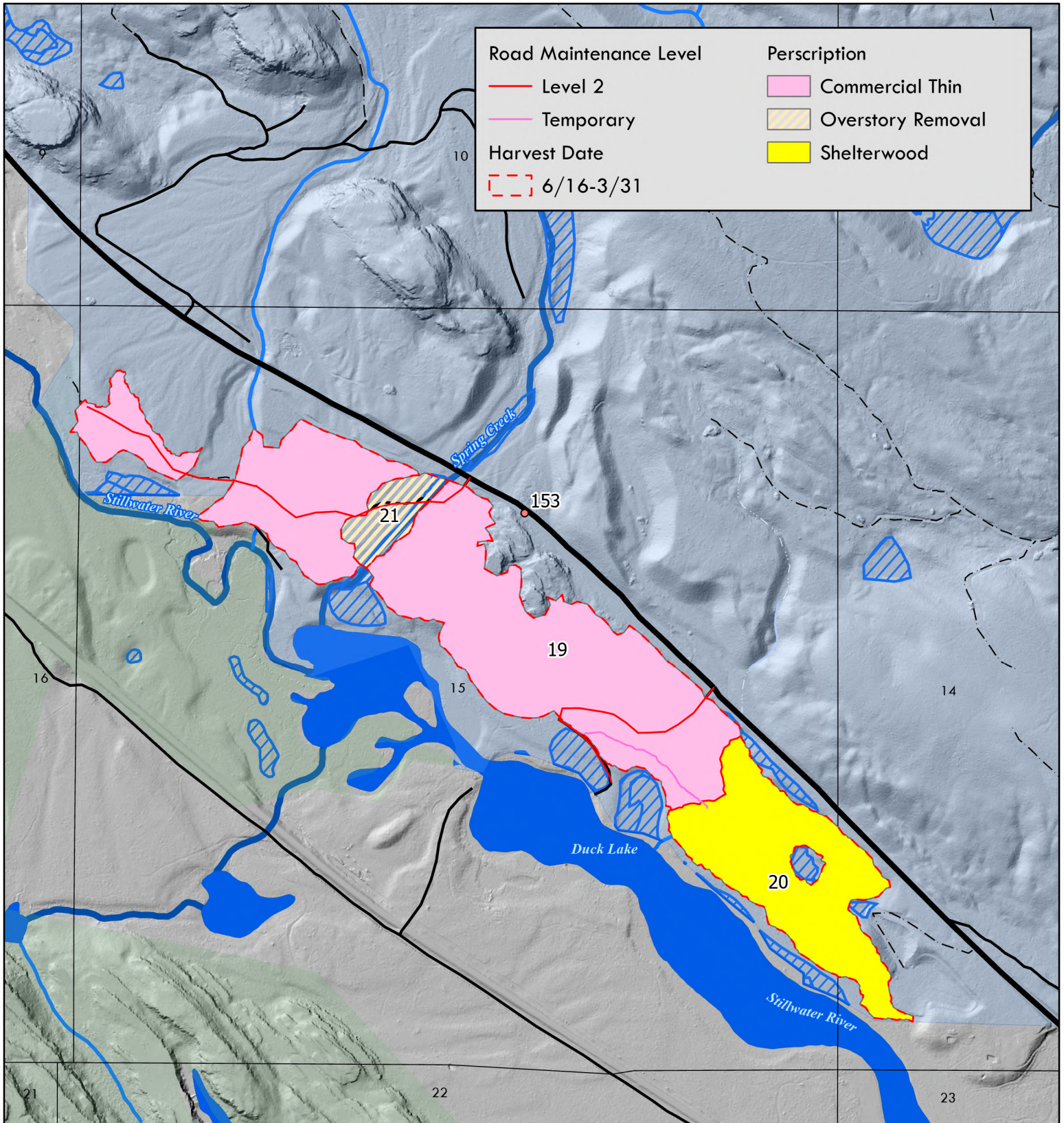
Joe Rizzi



Rad Dog Timber Sale

T33N R24W S 14, 15, 16

Attachment A: Page 6 of 7



January 9, 2025



0 0.25 0.5 Miles

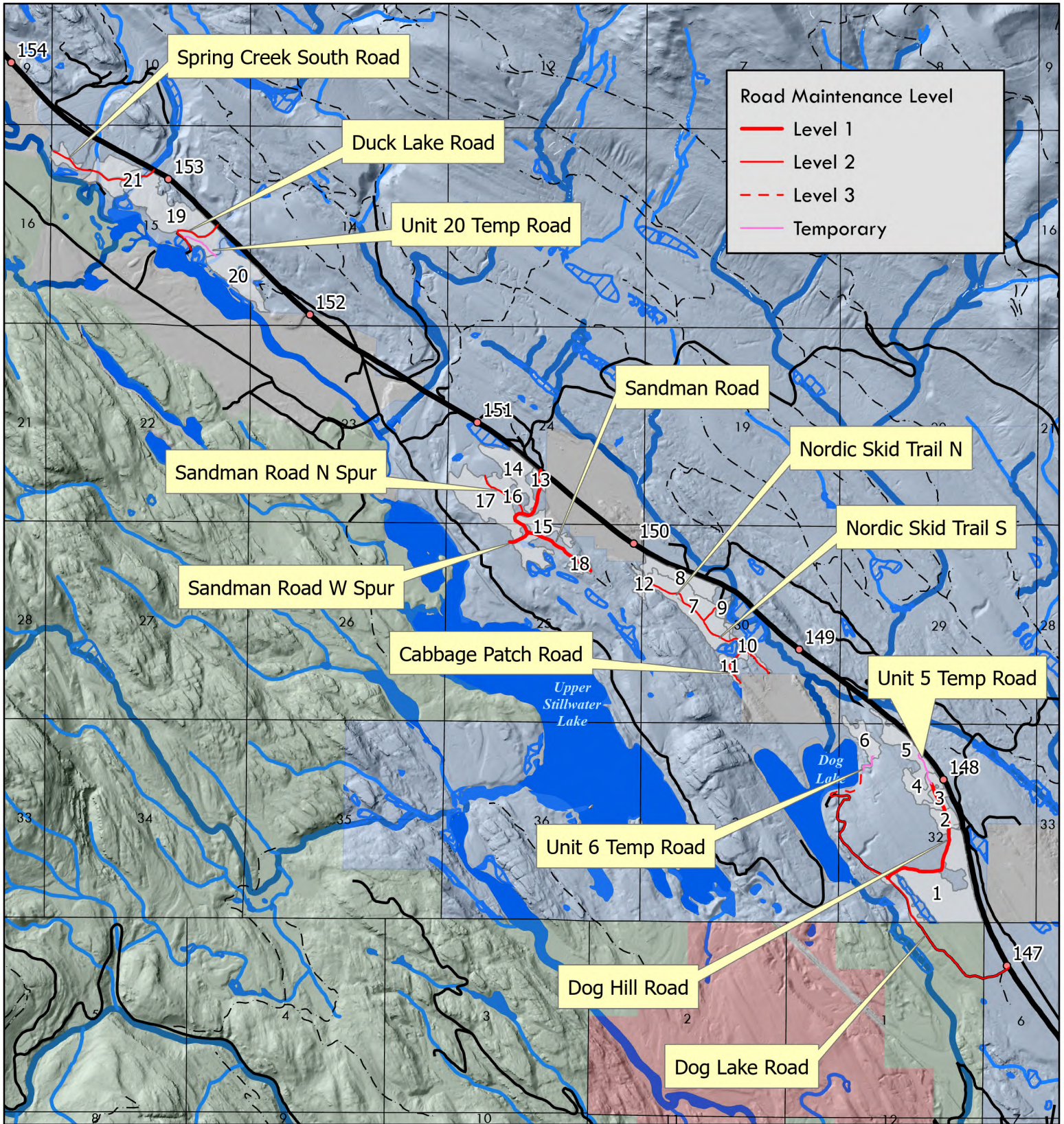
Joe Rizzi



Rad Dog Timber Sale

T33N R23W S 29, 30, 32
T33N R24W S 14, 15, 16, 24, 25

Attachment A: Page 7 of 7



November 29, 2024



Joe Rizzi

0 1 2 Miles

