

## NOTICE OF SALE

### **Department of Natural Resources & Conservation Timber Sale**

The GNA Hay Creek Deck Salvage is located within Sections 34, and 35 of T36N, R22W on the Flathead National Forest. Approximately 2,650 tons, consisting of mixed conifer sawlogs are offered for sale.

Sealed bids will be opened at the Department of Natural Resources & Conservation, **Kalispell Unit, 655 Timberwolf Parkway, Suite 1 Kalispell, MT 59901** on **November 23, 2021, at 2:00 pm**. Bids may be hand delivered or mailed and will be accepted any time prior to the bid opening. **DNRC recommends that bidders contact the DNRC Kalispell Unit (406-751-2241) prior to the bid opening to ensure that your bid has been received.** Bids must be accompanied by a deposit of **\$500.00**, in cashier's check, certified check, bank money order or bank draft to be applied to the first sale invoice for the successful bidder. Bid bonds will be accepted and, for the successful bidder, will be closed upon execution of the Timber Sale Contract and Timber Sale Bond.

The sale will be awarded to the highest responsible bidder. If the successful bidder is unable to execute the contract within **30** calendar days from the date the sale is awarded, the bid deposit will be retained by the Department as liquidated damages. The right is reserved to reject any or all bids.

Prospective bidders can obtain the sale prospectus, sale contract and bid forms from the Department of Natural Resources & Conservation, Forestry Division, in Missoula (406-542-4300), and the Kalispell Unit Office, in Kalispell (406-751-2241).

Visit our website at <https://gna-mtdnrc.hub.arcgis.com/pages/currently-advertised-timber-sales> for upcoming sales and bid results.

**TIMBER SALE PROSPECTUS**  
**STATE OF MONTANA DEPARTMENT OF NATURAL RESOURCES AND CONSERVATION**

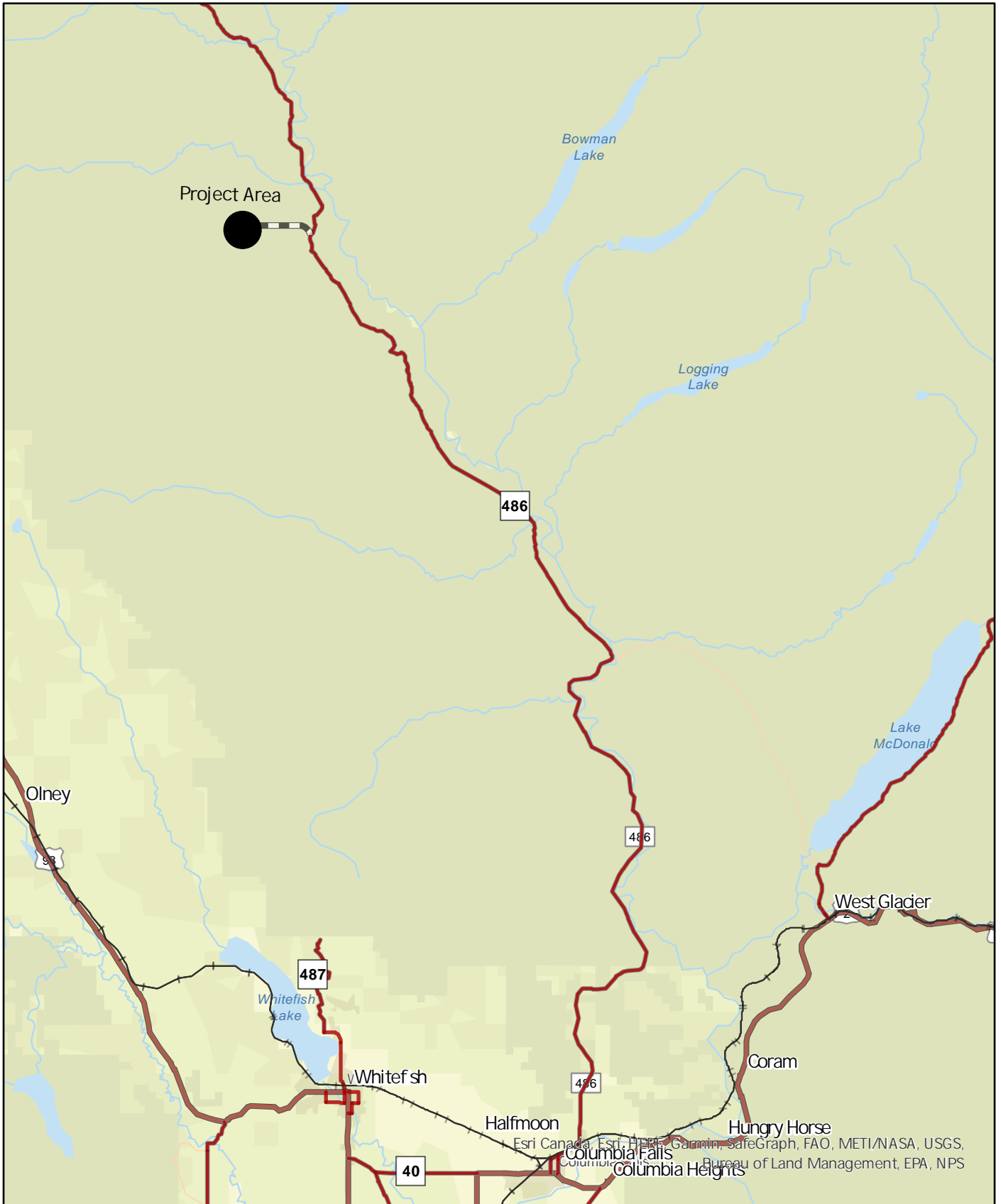
<b>Timber Sale Name: GNA Hay Cr. Decked Sale</b>	
<b>For specific sale information, contact: Caleb Deitz</b>	
Phone 406-751-2267	Kalispell Unit Office
<b>For copies of the Timber Sale Contract and bid forms, contact: Brook Blakely</b>	
Phone 406-751-2248	Northwestern Land Office

**General Bidding Information**

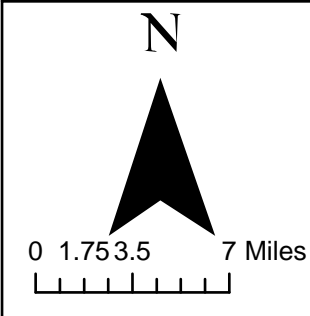
1. Bids must be submitted on Department of Natural Resources & Conservation (State) bid forms.
2. Timber will be sold to the highest responsible bidder; however, the State reserves the right to reject any or all bids.
3. The State recommends that bidders contact the Kalispell Unit 406-751-2267 prior to the bid opening to ensure that your bid has been received.
4. A **Bid Deposit** must accompany all bids and must be in the form of cash, cashiers check, certified check, money order, bank draft, surety bond or irrevocable letter of credit.
5. The Purchaser must submit a **Performance Bond** to the State within 30 days of notification of sale award. The bond amount will be, **20% of bid value, or \$3,500.00 whichever is greater**. The performance bond may be cash, irrevocable letter of credit, surety bond or certificate of deposit. The performance bond must be maintained separately from other payments for the duration of the Timber Sale Contract. See the Timber Sale Contract for additional information.
6. The purchaser must submit an **Advance Stumpage Payment** prior to cutting any timber. The amount of the advance stumpage payment will cover six weeks of harvesting and be based on the expected harvest rate and the bid value of the stumpage. The advance stumpage payment may be cash, irrevocable letter of credit, payment bond or certificate of deposit.
7. This sale is being sold based on the gross weight of all species. Minimum price and bid price are on a per ton basis. Unless otherwise specified, the price applies to all species, green and dead. Price may vary by product. Billing will be based on gross weight. A weight ticket from a certified scale is required for each load hauled, regardless of product type.
8. The State has estimated the net scale merchantable sawlog volume to be sold under this Contract. Other products may be part of this sale. All delivered wood will be weighed and billed at per ton bid rates. The State recognizes that a percentage of delivered wood may not meet the log manufacturing and recovery standards of the Timber Sale Contract. The actual percentage will vary based on the log manufacturing and recovery specifications of the purchaser and tree conditions in the sale area. The actual delivered weight may vary, resulting in an overrun or under-run of the estimated tonnage. The State strongly recommends that bidders evaluate these effects before bidding.
9. The State does not conduct detailed road appraisals. All appraised costs are gross estimates or averages, provided only to show the relative amount of work required, and not the true market value. The State strongly recommends that bidders make their own estimates based on Contract requirements. Cost estimates provided are not guaranteed.
10. Bidders are encouraged to examine the complete Timber Sale Package and Sale Area prior to bidding. Additional information is available at the phone numbers shown above.
11. Estimates for sale volume, species percents, defect, product class, etc. provided in this prospectus and volume estimates listed in the Timber Sale Contract are not guaranteed.
12. This prospectus is provided for information purposes only. If the prospectus is in error or contradicts the Timber Sale Contract, the Contract governs.

**Additional Sale Information:**

1. This sale is for decked material that resulted from the 2021 Hay Cr. wildfire. Decks were assembled from trees cut and removed along National Forest roads for fire mitigation from the Hay Creek Fire. The trees were cut by feller buncher and moved by truck to Moose creek where all trees were stacked. The trees are a mix of sawlogs, non-sawlogs and sub-merch material. Species mix is predominately western larch, lodgepole pine, Engelmann spruce, Douglas fir and subalpine fir. Estimated tonnage is based on rough estimation and previous experience with similar situations.
2. This timber sale is a State of Montana Timber Sale on National Forest System Land and is being performed under the Good Neighbor Authority. Potential Purchasers should be aware that this is a partnership, between the Montana DNRC and the US Forest Service, to increase the pace and Scale of forest restoration on National Forest System Lands. Good Neighbor Authority is a high priority of both agencies, and it has a high degree of public interest, the purchaser should expect increased DNRC, Forest Service, and public attention on this timber sale. The DNRC and Forest Service may wish to have public or media tours of this timber sale and we will encourage active involvement by the timber sale purchaser and their contractors.
3. Under the Good Neighbor Authority all NEPA mitigations and Forest Plan requirements must be adhered to. Specific mitigations to do so are written into the contract. The DNRC encourages potential purchasers to familiarize themselves with these mitigations prior to bidding.
4. **Daylight Operations: All machinery must be operated only during daylight hours, exception between December 1 and March 31.**
5. **An estimated 225 loads (6300 tons) of unprocessed trees are decked. Approximately 60% of that material is sawlog quality, 30% is other material and 10% is nonmerchantable. Additionally, we assume that 30% of the material is either currently damaged or will be damaged in removing it from the deck. This results in ~2,650 tons of Sawlogs and ~1,325 tons of optional other material.**
6. **The Purchaser will be required to pile and consolidate all logging slash and Other Material not hauled to an agreed upon location for future disposal as determined by the Forest Officer.**

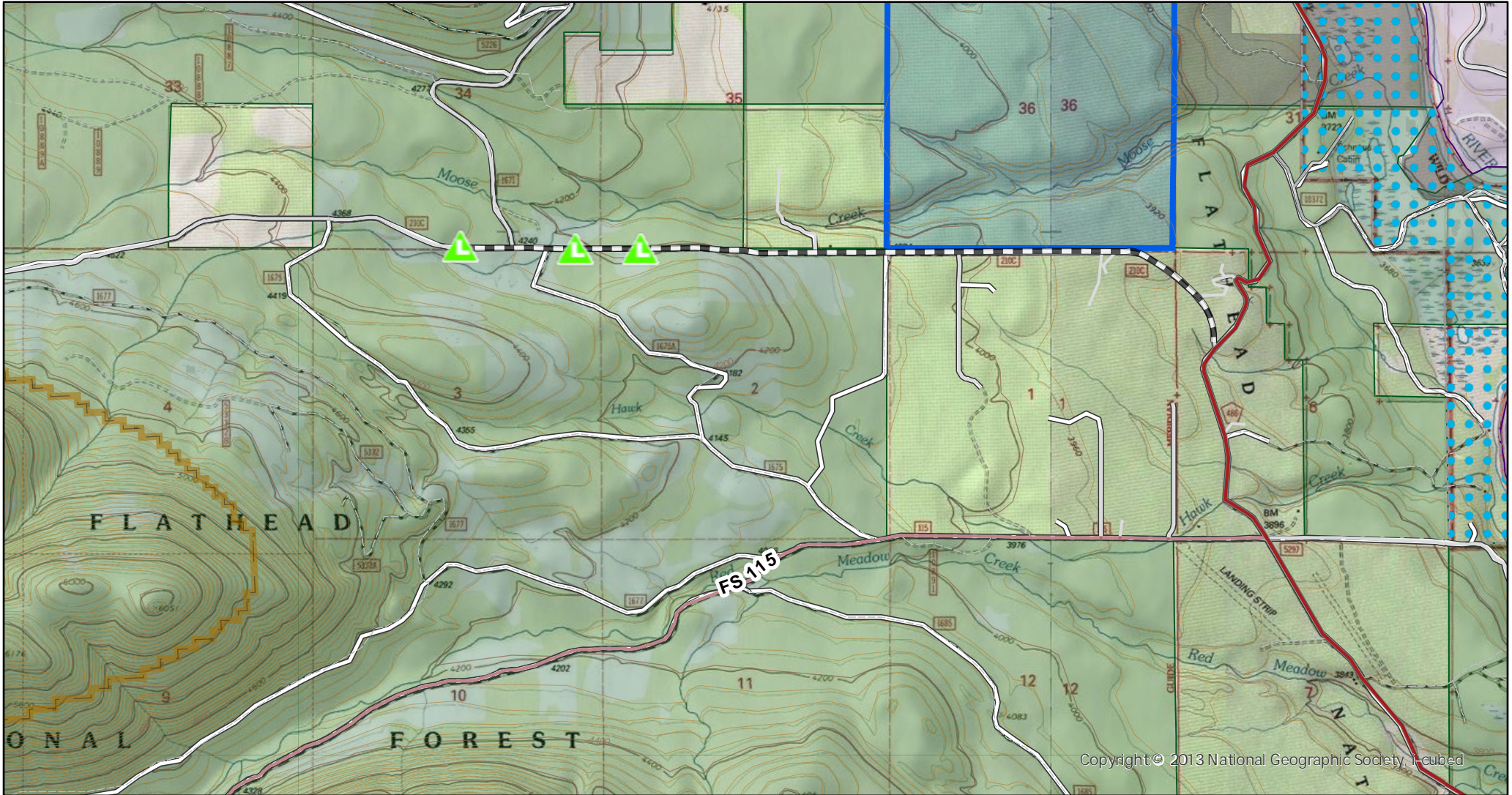


Esri Canada, Esri, HERE, Garmin, SafeGraph, FAO, METI/NASA, USGS, Bureau of Land Management, EPA, NPS



# Hay Cr. Decked Sale Vicinity Map





Copyright © 2013 National Geographic Society, I-cubed

GNA Sale Prep Points

 Landing Location

 Moose Cr. Road

# GNA Hay Creek Decked Sale

All three decks are readily visible from the main Moose Cr. Rd.. Access from MP 41 on the N. Fork Rd. The furthest and largest deck is ~ 2.8 miles up the Moose Cr. Rd.

## 2021

N



0 0.25 0.5 1 Miles