

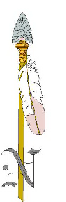
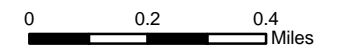
Place of Use
and Point of
Diversion
*Power
Generation*
**76LJ
30052871**
Exhibit 1



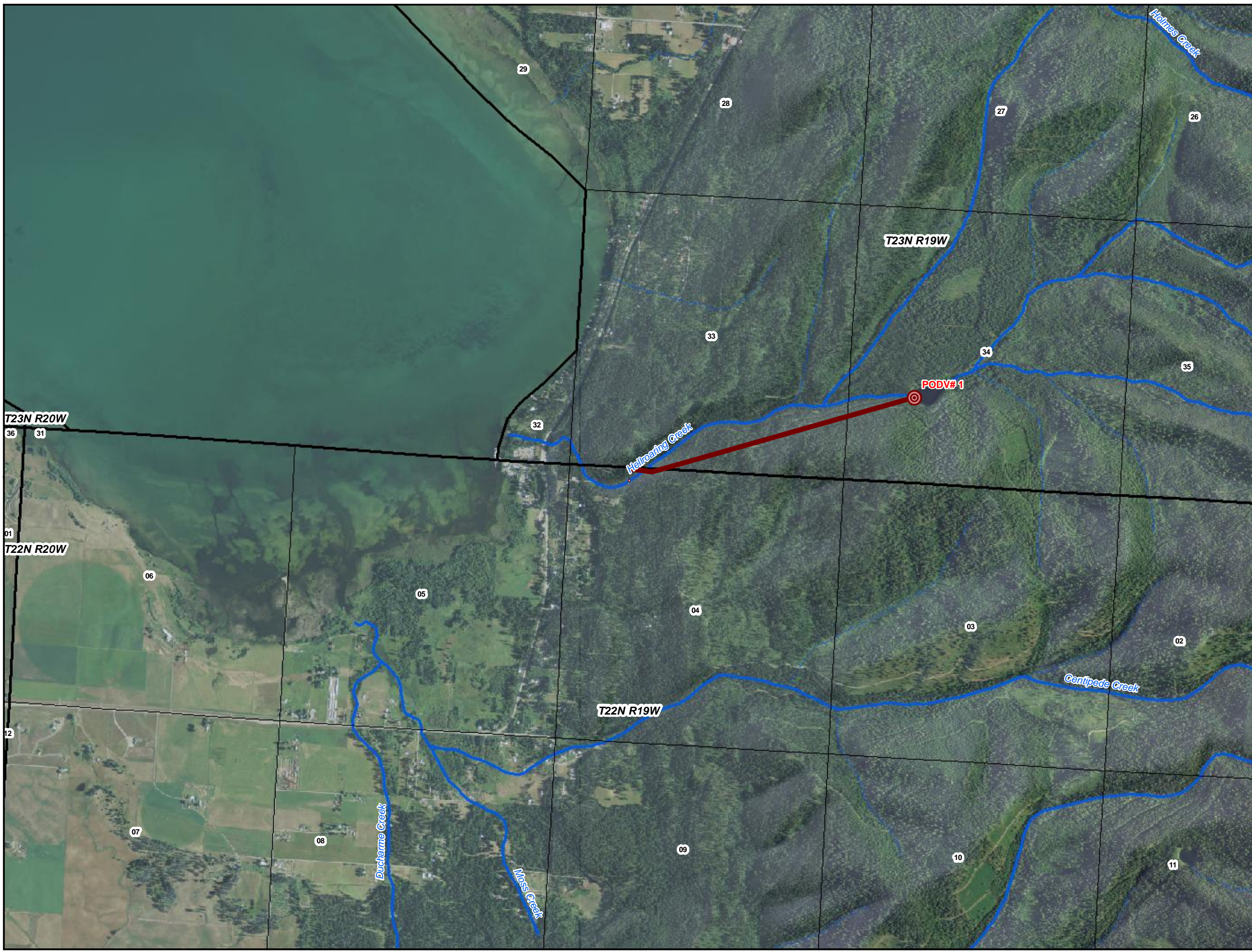
Flathead Indian Reservation

Legend

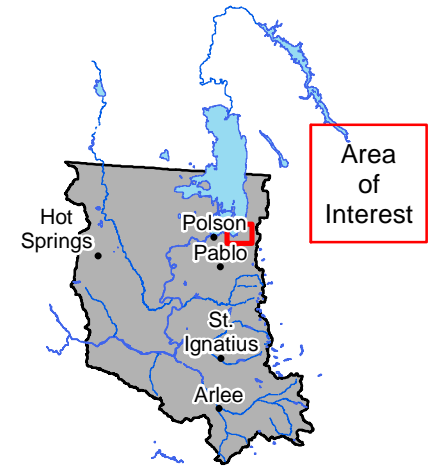
- Place of Use
- Primary Point(s) of Diversion
- Pipeline
- Reservation Boundary



POU/POD Data Source: CSKT-MT Compact Power Generation (available at nris.mt.gov)
 Imagery Source: "Montana 2009 Color NAIP Orthophotos, 12-Kilometer Tiles" courtesy of USDA-Farm Services Agency, Aerial Photography Field Office and the Montana State Library.
 Hillshade created from: "National Elevation Dataset" courtesy of U.S. Geological Survey (USGS), EROS Data Center (1-arc second)



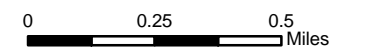
Place of Use
and Point of
Diversion
*Power
Generation*
**76LJ
30052872**
Exhibit 1



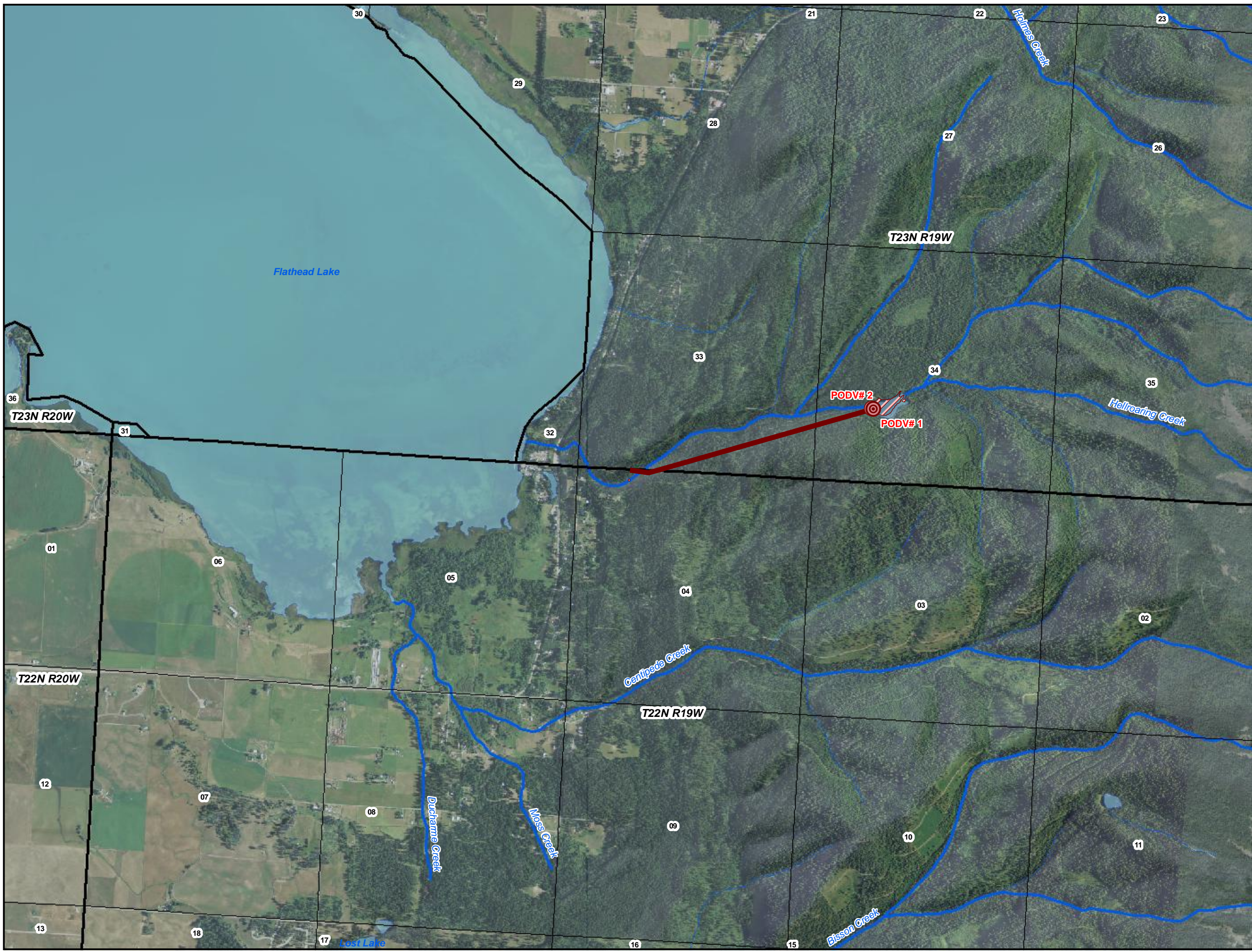
Flathead Indian Reservation

Legend

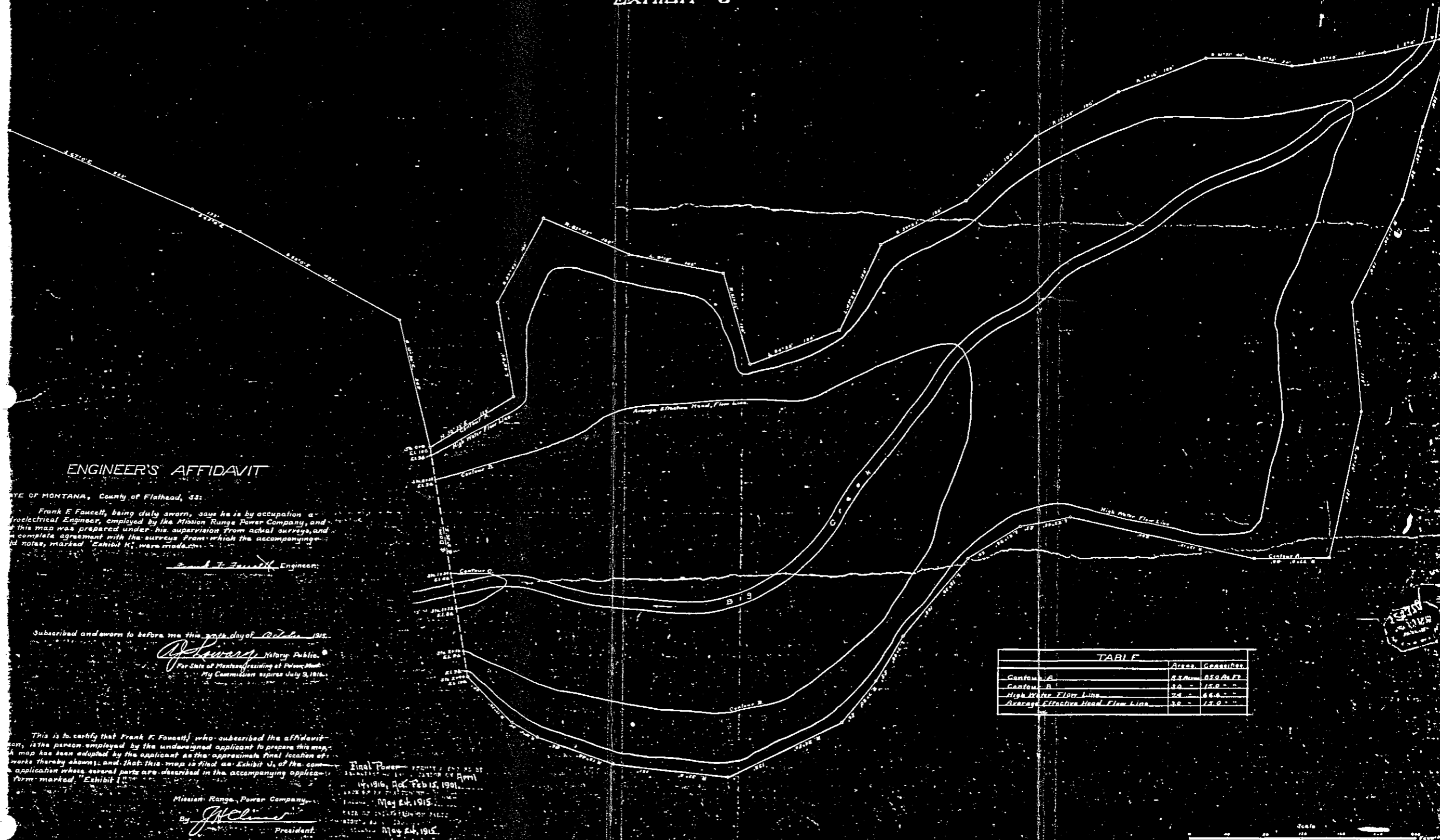
- Place of Use
- Primary Point(s) of Diversion
- Secondary Point(s) of Diversion
- Pipeline
- Reservoir
- Reservation Boundary



POU/POD Data Source: CSKT-MT Compact Power Generation (available at nris.mt.gov)
 Imagery Source: "Montana 2009 Color NAIP Orthophotos, 12-Kilometer Tiles" courtesy of USDA-Farm Services Agency, Aerial Photography Field Office and the Montana State Library.
 Hillshade created from: "National Elevation Dataset" courtesy of U.S. Geological Survey (USGS), EROS Data Center (1-arc second)



MAP OF RESERVOIR SITE
EXHIBIT J



ENGINEER'S AFFIDAVIT

STATE OF MONTANA, County of Flathead, SS:

Frank F. Fausett, being duly sworn, says he is by occupation a Professional Engineer, employed by the Mission Range Power Company, and that this map was prepared under his supervision from actual surveys, and in complete agreement with the surveys from which the accompanying notes, marked "Exhibit K", were made.

Frank F. Fausett, Engineer.

Subscribed and sworn to before me this 24th day of July, 1915.

[Signature] Notary Public.
Per State of Montana, residing at Helena, Mont.
My Commission expires July 9, 1916.

This is to certify that Frank F. Fausett, who subscribed the affidavit above, is the person employed by the undersigned applicant to prepare this map, and that this map has been adopted by the applicant as the approximate final location of the works thereby shown; and that this map is filed as Exhibit J, of the application where several parts are described in the accompanying application form marked "Exhibit I".

Mission Range Power Company,
By *[Signature]* President.

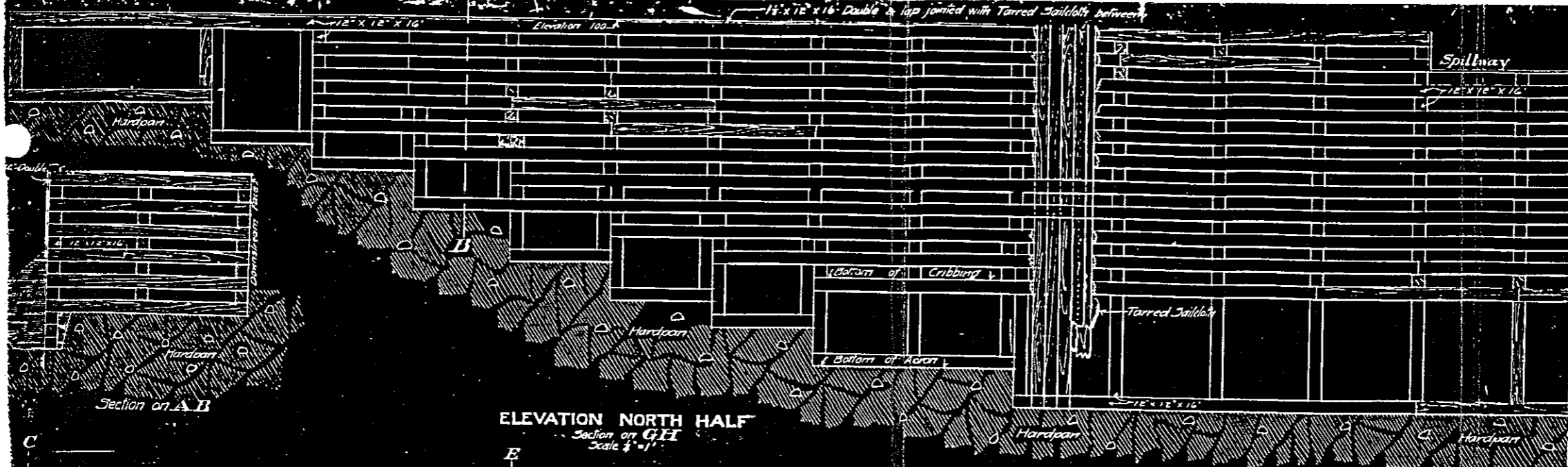
Mission Range Power Company
14, 1915, Rec. Feb 15, 1915.
May 24, 1915.
May 24, 1915.

TABLE

	Area	Per Cent
Contour A	2.5 Acres	0.50%
Contour B	1.0 - "	0.20 - "
High Water Flow Line	7.4 - "	1.48 - "
Average Effective Head Flow Line	3.0 - "	0.60 - "

Scale
1" = 100'

[Signature]
July 24, 1915



ELEVATION NORTH HALF
Section on G-H
Scale 1/4" = 1'



ELEVATION SOUTH HALF
Section on G-H
Scale 1/4" = 1'

PLAN OF DAM
EXHIBIT J-2



PLAN
Scale: 1" = 10'

PROFILE
Scale: 1/2" = 10'

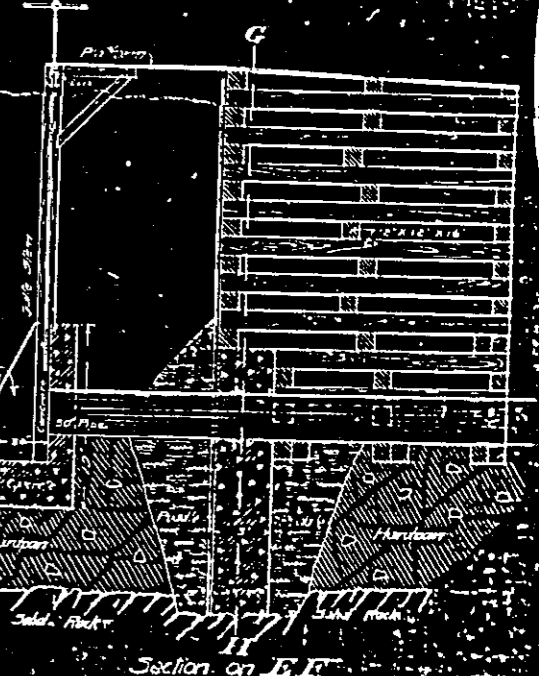
ENGINEER'S AFFIDAVIT
STATE OF MONTANA, County of Flathead, SS:
I, Frank F. Fauch, being duly sworn, say that I am by occupation a Hydraulic, Electrical Engineer, employed by the Mission Range Power Company, and that this plan was prepared under my supervision from actual surveys and designs and correctly represents so far as shown here the construction and design of the works described in the accompanying application form marked "Exhibit I"; and to the best of my knowledge and belief represents a safe, adequate, and feasible plan.
Frank F. Fauch, Engineer

Subscribed and sworn to before me this 27th day of October, 1916.
J. H. ... Notary Public,
For State of Montana, residing at Helena, Mont.
My Commission expires July 9, 1918.

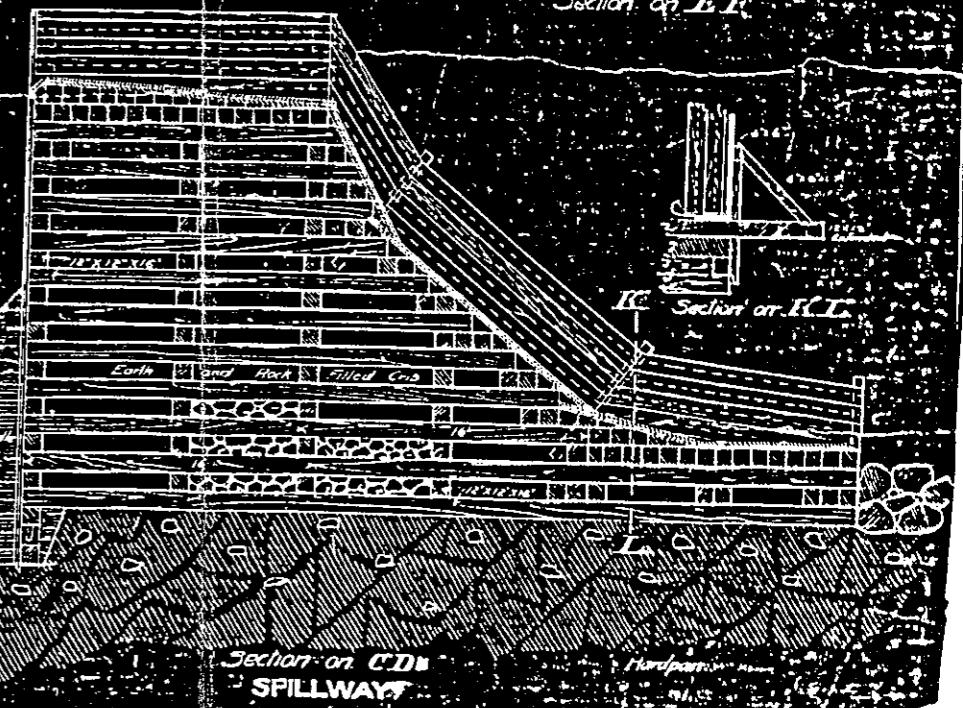
HELLROARING CREEK RESERVOIR

This is to certify that Frank F. Fauch, who subscribed the affidavit hereon, is the person employed by the Mission Range Power Company to prepare this plan, which plan has been adopted by the Commission on the construction and location of the works thereby shown; and that this plan is filed as Exhibit J-2 of the complete application whose several parts are described in the accompanying application form marked "Exhibit I".

Mission Range Power Company
By J. H. ...



Section on E-F



Section on C-D
SPILLWAY