

Appendix 3.2: River Diversion Allowances

This appendix specifies the water allocations for River Diversion Allowances (RDAs), as they are defined in Article II – Definitions of the Compact, for RDA administrative areas (see map). River Diversion Allowances are dedicated to serve irrigation headworks or pumping facilities for irrigated lands that are assessed and served by the Flathead Indian Irrigation Project (FIIP). River Diversion Allowances that are used to serve irrigated lands are applicable over the April 15 through September 15 period, and may be extended to no later than October 15. Certain RDAs are defined for conveyance between reservoirs or sources of water supply. Water distribution at these RDAs is not restricted to the April 15 through September 15 or October 15 period, as is specifically noted in tables below.

River Diversion Allowances are specified for wet, normal, and dry years for each RDA administrative area. Wet, normal and dry water year types were determined using natural streamflow information for the April through July runoff forecasting period for streamflow information spanning the 1983-2002 period. Details on the definition of wet, normal and dry years are reported in Appendix 3.7. Details on the annual, or seasonal, determination of water year types – wet, normal, or dry, are in the Adaptive Management Appendix to the Compact (Appendix 3.5).

River Diversion Allowances are reported for administered locations, and administered plus incremental inflow locations. Administered locations are irrigation headworks or pumping facilities where water measurement and seasonal accounting of the RDA volumes will occur. Both volumes and peak capacities are reported for these locations. Incremental inflow locations are areas where small streams or other incidental sources contribute inflows to the FIIP infrastructure; these are not intended for direct administration.

Throughout the RDA tables, af is an abbreviation for acre-feet and cfs is an abbreviation for cubic feet per second.

Jocko Area

Tabor Feeder Canal RDA Administrative Area (RDA not restricted to April 15 – September 15, or October 15 period)

	<i>Wet Year RDA</i>	<i>Normal Year RDA</i>	<i>Dry Year RDA</i>	<i>Peak Flow for administered locations</i>
	in af			in cfs
Administered locations	18,600	28,200	20,400	Location 1 - 150
Administered locations and incremental inflows	23,870	33,700	24,700	Location 2 – 420 Location 3 - 470

Administered locations: 1 - Tabor Feeder Canal at Middle Fork Jocko River (150 cfs), 2 - Tabor Feeder Canal at North Fork Jocko River (420 cfs), 3 – Tabor Feeder Canal below Twin Lakes (470 cfs)
Incremental inflow: Placid Diversions routed into Tabor Feeder Canal, Upper and Lower Jocko Reservoir storage routed into Tabor Feeder Canal, Falls Creek, S-14 Creek, Grizzly Creek

Upper Jocko River RDA Administrative Area

	<i>Wet Year RDA</i>	<i>Normal Year RDA</i>	<i>Dry Year RDA</i>	<i>Peak Flow for administered locations</i>
	in af			in cfs
Administered locations	22,900	24,000	26,500	Location 1 – 50
Administered locations and incremental inflow	24,450	25,700	28,700	Location 2 – 55 Location 3 - 245

Administered locations: 1 - Upper Jocko S Canal at Jocko River (50 cfs), 2 - Upper Jocko S Canal at Big Knife Creek (55 cfs), 3 - Jocko K Canal at headwork's (245 cfs).
Incremental inflow: Placid Diversions routed into Upper S and K Canals, Upper and Lower Jocko Reservoir storage routed into Upper S and K Canals, Cold Creek, Gold Creek, Pellew Creek, Lamoose Creek

Agency / Finley Creek RDA Administrative Area

	<i>Wet Year RDA</i>	<i>Normal Year RDA</i>	<i>Dry Year RDA</i>	<i>Peak Flow for administered locations</i>
	in af			in cfs
Administered locations	6,300	6,100	6,300	Location 1 – 55
Administered locations and incremental inflow	7,100	6,800	7,100	Location 2 – 10 Location 3 – 35 Location 4 – 14 Location 5 – 14 Location 6 - 1

Administered locations: 1 - Upper Jocko S Canal at Agency Creek (55 cfs), 2 - Upper Jocko J Canal at Agency Creek (10 cfs), 3 - Jocko E Canal at Agency Creek (35 cfs), 4 - Jocko E Canal at Finley Creek above siphon (14 cfs), 5 - Jocko N Canal at East Fork Finley Creek (14 cfs), 6 - Doney Ditch at Schley Creek (1 cfs).
Incremental inflow: Tailwater from Upper S Canal at Big Knife Creek, McClure Creek

Lower Jocko River RDA Administrative Area

	<i>Wet Year RDA</i>	<i>Normal Year RDA</i>	<i>Dry Year RDA</i>	<i>Peak Flow for administered locations</i>
	in af			in cfs
Administered locations	1,500	1,700	2,000	Location 1 – 15
No incremental inflows	---	---	---	Location 2 - 35

Administered locations: 1 - Lower Jocko S Canal at Jocko River (15 cfs), 2 - Lower Jocko J Canal at Jocko River (35 cfs)

Revais Creek RDA Administrative Area

	<i>Wet Year RDA</i>	<i>Normal Year RDA</i>	<i>Dry Year RDA</i>	<i>Peak Flow for administered locations</i>
	in af			in cfs
Administered location	2,000	1,800	1,700	Location 1 - 27
Administered location and incremental inflow	2,500	2,400	2,400	

Administered locations: 1 - Revais R Canal at Revais Creek (27 cfs).
Incremental inflow: Revais Pump inflow supplied from Lower Jocko J Canal (10.5 cfs)

Mission Area

Pablo Feeder Canal RDA Administrative Area (RDA not restricted to April 15 – September 15, or October 15 period when the purpose is to convey water to reservoirs)

	<i>Wet Year RDA</i>	<i>Normal Year RDA</i>	<i>Dry Year RDA</i>	<i>Peak Flow for administered locations</i>
	in af			in cfs
Administered locations	86,100	66,400	45,700	Location 1 – 255
Administered locations and incremental inflows	114,100	86,200	58,300	Location 2 – 300 Location 3 – 220 Location 4 – 270 Location 5 – 270 Location 6 – 470 Location 7 - 470

Administered locations: 1 - Mission DA Canal below DC Pool (255 cfs), 2 - Mission A Canal below Mission Creek (300 cfs), 3 - Pablo Feeder Canal below Post Creek (220 cfs), 4 - Pablo Feeder Canal below South Crow Creek (270 cfs), 5 - Pablo Feeder Canal at Middle Crow Creek (270 cfs), 6 - Pablo Feeder Canal at North Crow Creek (470 cfs), 7 - Pablo Feeder Canal at Pablo Drop (470 cfs).
Incremental inflow: Reservoir storage and incremental small stream inflows along Pablo Feeder Canal

Upper Mission Creek RDA Administrative Area (RDA not restricted to April 15 – September 15, or October 15 period when the purpose is to convey water to reservoirs)

	<i>Wet Year RDA</i>	<i>Normal Year RDA</i>	<i>Dry Year RDA</i>	<i>Peak Flow for administered locations</i>
	in af			in cfs
Administered locations	31,000	33,800	38,000	Location 1 – 3
Administered locations and incremental inflow	35,200	37,400	40,000	Location 2 – 1 Location 3 – 27 Location 4 – 60 Location 5 – 100 Location 6 – 10 Location 7 – 250 Location 8 - 70

Administered locations: 1 - DC-2 Lateral at Dry Creek Lining (3 cfs), 2 - Cold Creek Ditch at Cold Creek (1 cfs), 3 - Mission F Canal at headwork's (27 cfs), 4 - Mission B Canal at Mission Creek (60 cfs), 5 - Mission C Canal at Mission Creek (100 cfs), 6 - Mission 6C Canal at Mission Creek (10 cfs), 7 - Kicking Horse Feeder Canal at Post Creek (250 cfs), 8 - Post F Canal at Post Creek (70 cfs).

Incremental inflow: Return flow reuse from irrigation losses, incremental small stream inflows

Lower Mission Creek RDA Administrative Area

	<i>Wet Year RDA</i>	<i>Normal Year RDA</i>	<i>Dry Year RDA</i>	<i>Peak Flow for administered locations</i>
	in af			in cfs
Administered location	1,000	1,000	1,000	Location 1 - 15
No incremental inflows	---	---	---	

Administered location: 1 - Mission H Canal at Mission Creek (15 cfs)

Upper Crow Creek RDA Administrative Area (RDA not restricted to April 15 – September 15, or October 15 period when the purpose is to convey water to reservoirs)

	<i>Wet Year RDA</i>	<i>Normal Year RDA</i>	<i>Dry Year RDA</i>	<i>Peak Flow for administered locations</i>
	in af			in cfs
Administered locations	15,300	14,000	11,700	Location 1 – 275
Administered locations and incremental inflow	16,300	15,000	12,800	Location 2 – 22 Location 3 - 24

Administered locations: 1 - South Crow Feeder Canal at South Crow Creek (275 cfs), 2 - Crow Pump Canal at Crow Creek (22 cfs), 3 - Ronan B Canal at Mud Creek (24 cfs)

Incremental inflow: Pablo Feeder Canal from Mission South Area, return flow reuse from irrigation losses

Lower Crow Creek RDA Administrative Area

	<i>Wet Year RDA</i>	<i>Normal Year RDA</i>	<i>Dry Year RDA</i>	<i>Peak Flow for administered locations</i>
	in af			in cfs
Administered locations	20,000	20,000	20,000	Location 1 – 100
No incremental inflows	---	---	---	Location 2 - 30
Administered locations: 1 - Moiese A Canal at Crow Creek (100 cfs), 2 - Hillside Ditch (30 cfs)				

Hellroaring/Centipede/Bisson Creek RDA Administrative Area

	<i>Wet Year RDA</i>	<i>Normal Year RDA</i>	<i>Dry Year RDA</i>	<i>Peak Flow for administered locations</i>
	in af			in cfs
Administered locations	1,400	1,400	1,400	Location 1 – 15
No incremental inflows	---	---	---	Location 2 – 15 Location 3 - 8
Administered locations: 1 - Twin Feeder Canal at Hellroaring Creek (15 cfs), 2 - Twin Feeder Canal at Centipede Creek (15 cfs), 3 - Lower Twin Feeder Canal at Bisson Creek (8 cfs)				

Pablo A Canal RDA Administrative Area

	<i>Wet Year RDA</i>	<i>Normal Year RDA</i>	<i>Dry Year RDA</i>	<i>Peak Flow for administered locations</i>
	in af			in cfs
Administered location	45,400	47,100	49,900	Location 1 – 420
No incremental inflows	---	---	---	
Administered location: 1 – Pablo A Canal below Pablo Reservoir (420 cfs)				

Flathead River Pumping Plant RDA (RDA not restricted to April 15 – September 15, or October 15 period)

<i>Administration area type</i>	<i>RDA</i>	<i>Peak Flow for Pumping Plant</i>
	in af	in cfs
Administered location	65,000	210

Little Bitterroot Area

Little Bitterroot River RDA Administrative Area

	<i>Wet Year RDA</i>	<i>Normal Year RDA</i>	<i>Dry Year RDA</i>	<i>Peak Flow for administered locations</i>
	in af			in cfs
Administered location	18,000	18,000	18,000	Location 1 - 90
Administered location: 1 - Camas A Canal at Mill Creek (90 cfs)				

Off-Reservation Areas

Placid Canal Diversion RDA (RDA not restricted to April 15 – September 15, or October 15 period)

<i>Administration area type</i>	<i>RDA</i>	<i>Peak Flow for administered locations</i>
	in af	in cfs
Administered location	10,000	Location 1 - 120
Administered location: 1 – Placid Canal Diversion (120 cfs)		

McGinnis Diversion RDA (RDA not restricted to April 15 – September 15, or October 15 period)

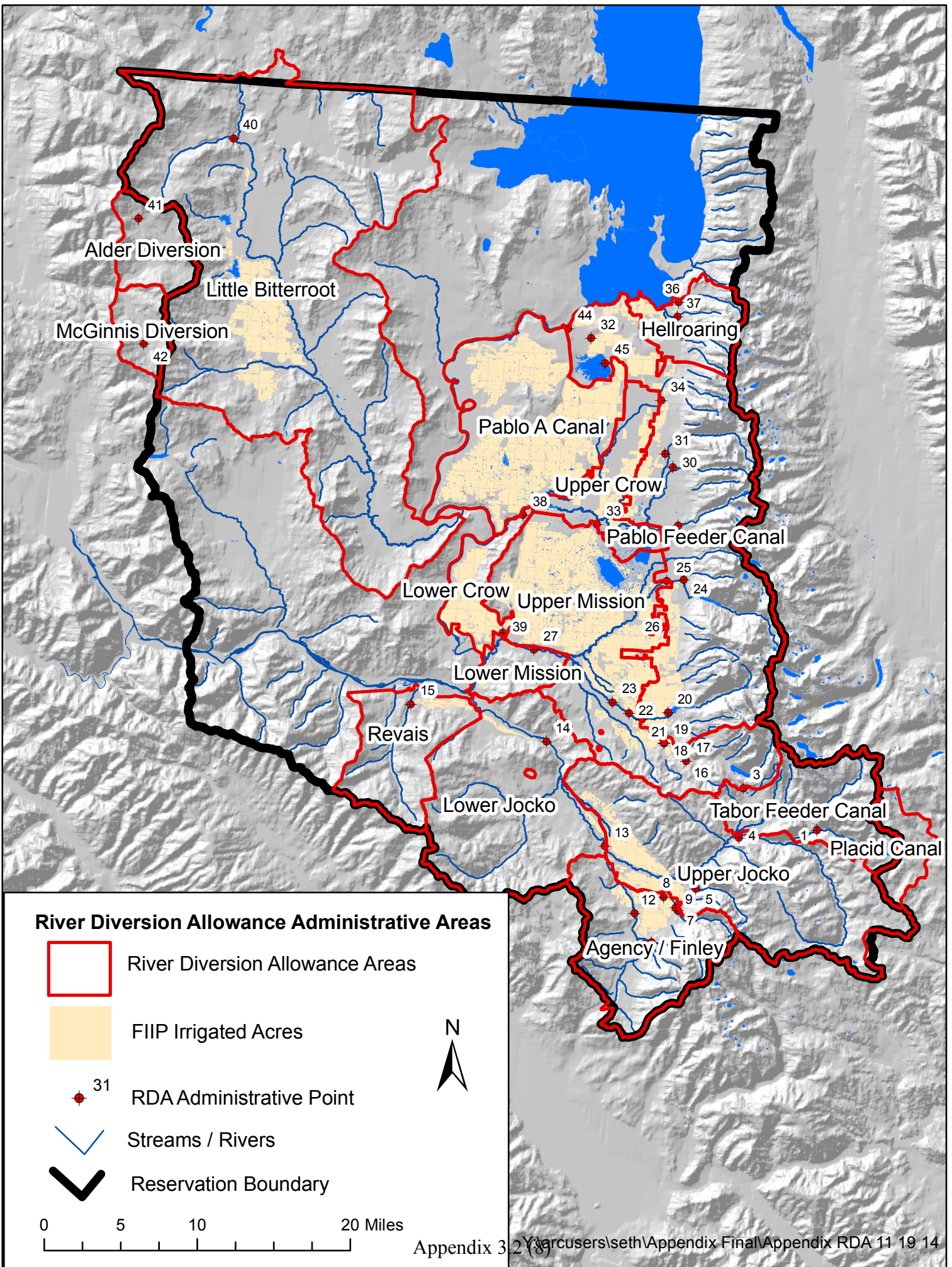
<i>Administration area type</i>	<i>RDA</i>	<i>Peak Flow for administered locations</i>
	in af	in cfs
Administered location	1,800	16
Administered location: 1 – McGinnis Diversion (16 cfs)		

Alder Diversion RDA (RDA not restricted to April 15 – September 15, or October 15 period)

<i>Administration area type</i>	<i>RDA</i>	<i>Peak Flow for administered locations</i>
	in af	in cfs
Administered location	3,500	45
Administered location: 1 – Alder Diversion (45 cfs)		

Table associating RDA administrative point numeric labels with administrative point name on map

Point	RDA point name	Point	RDA point name
1	Tabor Feeder Canal at Middle Fork Jocko	23	Mission 6C Canal at headworks below Mission
2	Tabor Feeder Canal at North Fork Jocko	24	Pablo Feeder Canal below Post Creek
3	Tabor Feeder Canal below Twin Lakes	25	Kicking Horse Feeder Canal at headworks below
4	Upper Jocko S Canal at the Jocko River	26	Post F Canal at headworks below Post Creek
5	Upper Jocko S Canal at Big Knife Creek	27	Mission H Canal at headworks below Mission
6	Jocko K Canal at Jocko River	28	Pablo Feeder Canal at headworks below South
7	Upper Jocko S Canal at Agency Creek	29	South Crow Feeder Canal at headworks below
8	Jocko E Canal at Agency Creek	30	Pablo Feeder Canal at headworks below Middle
9	Upper Jocko J Canal at headworks below	31	Pablo Feeder Canal at headworks below North
10	Jocko N Canal at East Finley Creek	32	Pablo Feeder Canal at Pablo Drop
11	Doney Ditch at Schley Creek	33	Crow Pump Canal at headworks below Crow
12	Jocko E Canal at Finley Creek	34	Ronan B Canal at headworks below Mud Creek
13	Lower Jocko S Canal on Jocko River below	35	Lower Twin Feeder Canal at headworks below
14	Lower Jocko J Canal at Jocko River	36	Twin Feeder Canal at headworks below
15	Revais R Canal at Revais Creek	37	Twin Feeder Canal below Centipede Creek
16	Cold Creek Ditch at Cold Creek	38	Moiese A Canal at headworks below Crow Creek
17	DC-2 lateral at Dry Creek lining	39	Hillside Ditch at headworks
18	Mission F Canal at headworks below DC	40	Camas A Canal at headworks below Mill Creek
19	Mission DA Canal below DC pool	41	Alder Ditch at headworks below Alder Creek
20	Mission A Canal at Mission Creek	42	McGinnis Creek at headworks below McGinnis
21	Mission B Canal at headworks below	43	Placid Canal at headworks below Placid Creek
22	Mission C Canal at headworks below	44	Flathead River Pumping Plant
		45	Pablo A Canal below Pablo Reservoir



Alder Diversion

Little Bitterroot

McGinnis Diversion

Hellroaring

Pablo A Canal

Upper Crow

Pablo Feeder Canal

Lower Crow

Upper Mission

Lower Mission

Revais

Lower Jocko

Tabor Feeder Canal

Placid Canal

Upper Jocko

Agency / Finley