

### **Appendix 3.4: Implementation Schedule**

This appendix to the Compact specifies implementation schedules for Operational Improvement actions that modernize Flathead Indian Irrigation Project (FIIP) water management procedures and improve the Compact Implementation Technical Team's (CITT) ability to plan for and manage natural and regulated streamflows, reservoir storage, and allocation between instream and irrigation uses of water. Tables in this appendix provide the overall planning schedule for Operational Improvements, and provide the planning schedule for Operational Improvements within each geographic area.

Incremental implementation of Minimum Enforceable (MEFs) and Target Instream Flows (TIFs), Minimum Reservoir Pool Elevations, and River Diversion Allowances (RDAs) will occur as Operational Improvements are implemented. MEF, TIF, RDA and Minimum Reservoir Pool Elevations will become enforceable when Operational Improvements are completed following the schedules found in the tables below.

The Parties recognize that State and Federal appropriations to implement Operational Improvements may not be sufficient to cure all deficiencies on the FIIP. Recognizing this, full enforcement of the MEF, TIF, RDA and Minimum Reservoir Pool Elevations will not be delayed if the full appropriation from State or Federal sources that is directed to Operational Improvements occurs, but is not sufficient to meet all deficiencies the Operational Improvement is targeted to address.

Irrigation diversion headworks automation is an Operational Improvement that will require State and Federal appropriations for Operational Improvements and Federal appropriations for Rehabilitation and Betterment to complete. Recognizing this, completion of diversion headworks automation will not be applied as a condition to determine when Operational Improvements are complete.

A list of Operational Improvements is set forth in Appendix 3.4. This list may be modified by the CITT as provided in Appendix 3.5. Any such modification is pursuant to, and shall not be deemed an amendment of, this Compact.


Table 1.0: Overall Schedule for Implementation of Operational Improvements														
	mid-2015	2015	2016	2017	Effective Date	Effective Date + 1 year	Effective Date + 2 years	Effective Date + 3 years	Effective Date + 4 years	Effective Date + 5 years	Effective Date + 6 years	Effective Date + 7 years	Effective Date + 8 years	
<b>1. Comprehensive Actions FIIP-Wide</b>	Montana Legislative Approval of Compact													
<i>a. CITT * Formation</i>		█												
<i>b. CITT Water Management Coordination</i>										Ongoing for Duration of Compact				
<i>c. CITT Water Measurement</i>										Ongoing for Duration of Compact				
<i>d. CITT Onfarm Efficiency Improvements</i>										Ongoing for Duration of Compact				
<i>e. CITT Stockwater Mitigation</i>										Ongoing for Duration of Compact				
<i>c. FIIP Modernization Plan</i>					█									
<i>d. Forecasting Procedures</i>					█									
<i>e. Develop Web-Based Irrigation Management Tools</i>					█									
<i>f. CITT Website</i>					█									
<b>2. Geographically-Focused Actions</b>														
<i>a. Mission Valley South</i>						█					→			
<i>b. Mission Valley North</i>													→	
<i>c. Jocko Valley</i>														→
<i>d. Little Bitterroot Valley</i>													→	
* CITT - Compact Implementation Technical Team													→	

Notes

- 1 Comprehensive Actions FIIP-Wide refers to Operational Improvements, or other actions, that are applicable across the FIIP footprint, and are implemented with this perspective.
- 2 Geographically Focused Actions refers to the schedule for implementation of targeted Operational Improvements following a priority scheme for each geographic area.
- 3 Water Measurement, Onfarm Efficiency Improvements and Stockwater mitigation are identified as FIIP-Wide Actions, however implementation of these actions is planned to partially occur following geographic priorities.

Table 2.0: FIIP-Wide Planning for, and Implementation of, Operational Improvement Actions					
	mid-2015	2015	2016	2017	
<b>Comprehensive Actions FIIP-Wide</b>	Montana Legislative Approval of Compact				
<b>1. CITT* Formation</b>					
a. Parties and Project Operator Form CITT following Compact process					
<b>2. CITT Water Management Coordination</b>			Ongoing for Duration of Compact		
<b>3. FIIP Modernization Plan</b>					
a. CITT Finalize Scope of Work					
b. CITT Contract for Service					
c. CITT/Contractor Prepare Draft Plan					
d. Outside Review and CITT/Contractor Completion of Plan					
<b>4. Forecasting Procedures</b>					
a. CITT Contract for Service					
b. CITT/Contractor Complete Forecast Workproduct					
<b>5. Web-Based Irrigation Water Management/Scheduling Tools</b>					
a. State/CITT Develop Web-Based Irrigation Management Tools					
<b>6. CITT Website Development</b>					
a. CITT Define Website Functionality					
b. CITT Contract for Service					
c. Contractor Complete Website Workproduct					
<b>7. CITT Reporting and Data Dissemination</b>					
a. CITT Prepare Annual Water Measurement/Management Report					
b. CITT Maintains Information on Website					
* CITT - Compact Implementation Technical Team					


**Table 3.0: Schedule for Implementation of Operational Improvements: Mission Valley South**

	Effective Date	Effective Date + 1 year	Effective Date + 2 years	Effective Date + 3 years	Effective Date + 4 years
<b>1. CITT Water Management Coordination</b>				Ongoing for Duration of Compact 	
<b>2. Water Measurement</b>					
a. CSKT - Streams and Instream Flow Sites					
b. CSKT - Administered RDA sites					
c. CSKT - Reservoirs					
d. CSKT - Irrigation Return Flows					
e. Project Operator - Lateral Canals					
f. Project Operator - Farm Delivery Locations					
<b>3. Operations Model</b>					
a. CITT Scope of Model Work					
b. CITT Contract for Services					
c. CITT/Contractor Construct Model			Modeling applies to Mission Valley South and North Areas		
d. CITT Run and Maintain Model				Ongoing for Duration of Compact	
<b>4. Farm Delivery Accounting</b>					
a. CITT Scope of Accounting System		Accounting System applies FHIP-Wide			
b. CITT Contract for Services		Accounting System applies FHIP-Wide			
c. CITT/Contractor Construct Accounting System		Accounting System applies FHIP-Wide			
d. Project Operator Populate Accounting System				Applies to Mission Valley South	
e. Project Operator Run and Maintain Model				Ongoing for Duration of Compact	
<b>5. Onfarm Efficiency Improvements</b>					
a. State/CITT Cost-Share Onfarm Conservation Practices				Ongoing for Duration of Compact	
<b>6. Stockwater Mitigation</b>					
a. State/CITT Cost-Share Stockwater Developments				Ongoing for Duration of Compact	
<b>7. Irrigation Diversion Headworks Automation</b>					
a. Retrofit Certain Diversion Structures to Support Automation					

 Full MEF and TIF Instream Flow and River Diversion Allowance Enforcement occurs

Notes

- 1. Several actions identified in this table are planned for partial implementation prior to the Effective Date as identified in Table 1.0

<b>Table 4.0: Schedule for Implementation of Operational Improvements: Mission Valley North</b>					
	Effective Date + 2 years	Effective Date + 3 years	Effective Date + 4 years	Effective Date + 5 years	Effective Date + 6 years
<b>1. CITT Water Management Coordination</b>	Ongoing for Duration of Compact 				
<b>2. Water Measurement</b>					
a. CSKT - Streams and Instream Flow Sites	Ongoing for Duration of Compact				
b. CSKT - Administered RDA sites	Ongoing for Duration of Compact				
c. CSKT - Reservoirs	Ongoing for Duration of Compact				
d. CSKT - Irrigation Return Flows	Ongoing for Duration of Compact				
e. Project Operator - Lateral Canals	Ongoing for Duration of Compact				
f. Project Operator - Farm Delivery Locations	Ongoing for Duration of Compact				
<b>3. Operations Model</b>					
a. CITT/Contractor Construct Model	Modeling applies to Mission Valley South and North Areas				
b. CITT Run and Maintain Model	Ongoing for Duration of Compact				
<b>4. Farm Delivery Accounting</b>					
a. Project Operator Populate Accounting System	Applies to Mission Valley North				
b. Project Operator Run and Maintain Accounting System	Ongoing for Duration of Compact				
<b>5. Onfarm Efficiency Improvements</b>					
a. State/CITT Cost-Share Onfarm Conservation Practices	Ongoing for Duration of Compact				
<b>6. Stockwater Mitigation</b>					
a. State/CITT Cost-Share Stockwater Developments	Ongoing for Duration of Compact				
<b>7. Irrigation Diversion Headworks Automation</b>					
a. Retrofit Certain Diversion Structures to Support Automation	Ongoing for Duration of Compact				


 Full MEF and TIF Instream Flow and River Diversion Allowance Enforcement occurs

Notes

- Several actions identified in this table are planned for partial implementation prior to the Effective Date as identified in Table 1.0

**Table 5.0: Schedule for Implementation of Operational Improvements: Jocko Valley**


	Effective Date + 3 years	Effective Date + 4 years	Effective Date + 5 years	Effective Date + 6 years	Effective Date + 7 years
<b>1. CITT Water Management Coordination</b>				Ongoing for Duration of Compact	
<b>2. Water Measurement</b>					
a. CSKT - Streams and Instream Flow Sites					
b. CSKT - Administered RDA sites					
c. CSKT - Reservoirs					
d. CSKT - Irrigation Return Flows					
e. Project Operator - Lateral Canals					
f. Project Operator - Farm Delivery Locations					
<b>3. Operations Model</b>					
a. CITT Scope of Model Work					
b. CITT Contract for Services					
c. CITT/Contractor Construct Model					
d. CITT Run and Maintain Model				Ongoing for Duration of Compact	
<b>4. Farm Delivery Accounting</b>					
a. Project Operator Populate Accounting System			Applies to Jocko Valley		
b. Project Operator Run and Maintain Accounting System				Ongoing for Duration of Compact	
<b>5. Onfarm Efficiency Improvements</b>					
a. State/CITT Cost-Share Onfarm Conservation Practices				Ongoing for Duration of Compact	
<b>6. Stockwater Mitigation</b>					
a. State/CITT Cost-Share Stockwater Developments				Ongoing for Duration of Compact	
<b>7. Irrigation Diversion Headworks Automation</b>					
a. Retrofit Certain Diversion Structures to Support Automation					


 Full MEF and TIF Instream Flow and River Diversion Allowance Enforcement occurs

Notes

- 1 Several actions identified in this table are planned for partial implementation prior to the Effective Date as identified in Table 1.0

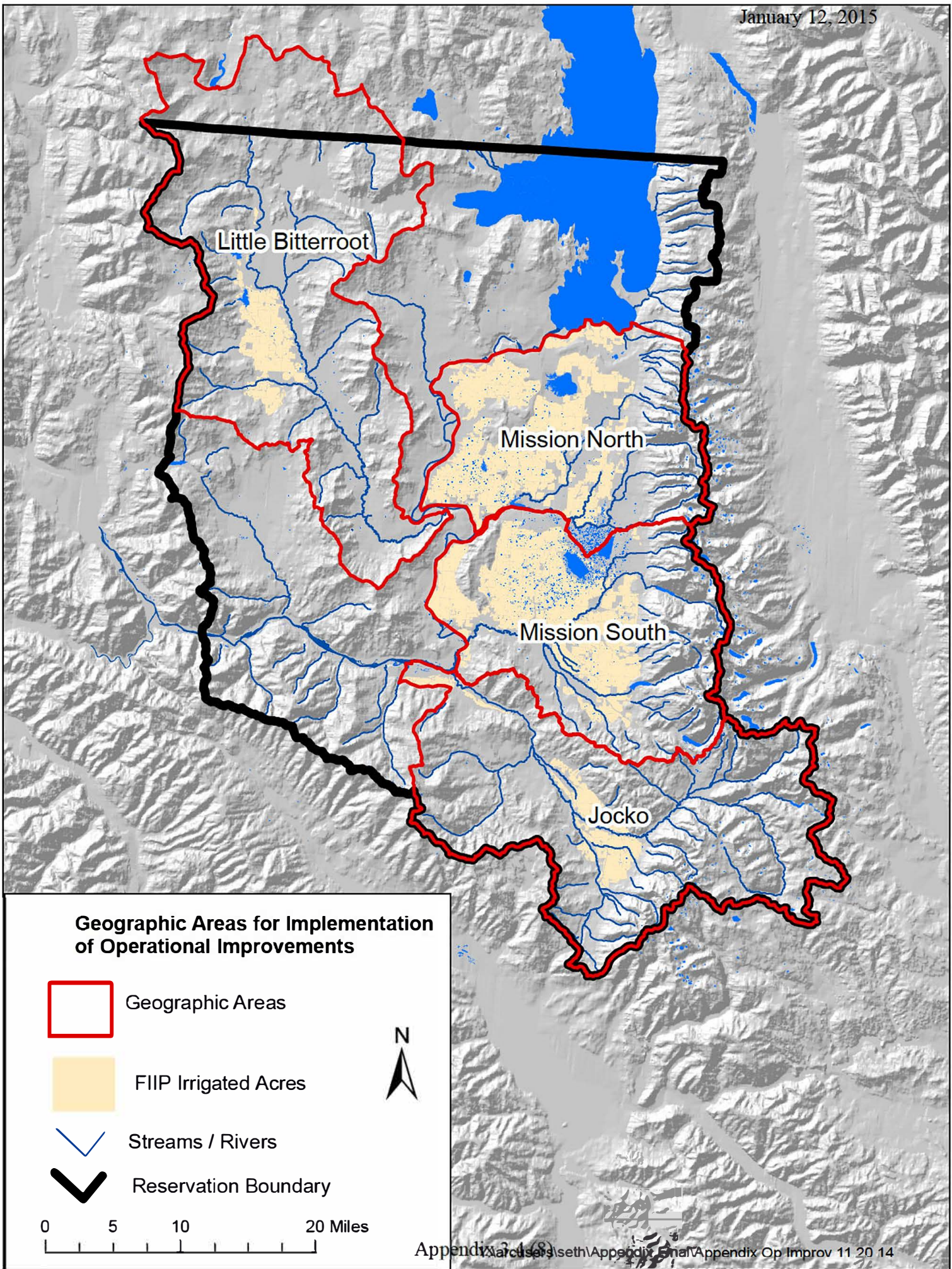
**Table 6.0: Schedule for Implementation of Operational Improvements: Little Bitterroot Valley**

	Effective Date + 4 years	Effective Date + 5 years	Effective Date + 6 years	Effective Date + 7 years	Effective Date + 8 years
<b>1. CITT Water Management Coordination</b>				Ongoing for Duration of Compact 	
<b>2. Water Measurement</b>					
a. CSKT - Streams and Instream Flow Sites					
b. CSKT - Administered RDA* sites					
c. CSKT - Reservoirs					
d. CSKT - Irrigation Return Flows					
e. Project Operator - Lateral Canals					
e. Project Operator - Farm Delivery Locations					
<b>3. Operations Model</b>					
a. CITT Scope of Model Work					
b. CITT Contract for Services					
c. CITT/Contractor Construct Model					
d. CITT Run and Maintain Model				Ongoing for Duration of Compact	
<b>4. Farm Delivery Accounting</b>					
a. Project Operator Populate Accounting System			Applies to Little Bitterroot Valley		
b. Project Operator Run and Maintain Accounting System				Ongoing for Duration of Compact	
<b>5. Onfarm Efficiency Improvements</b>					
a. State/CITT Cost-Share Onfarm Conservation Practices				Ongoing for Duration of Compact	
<b>6. Stockwater Mitigation</b>					
a. State/CITT Cost-Share Stockwater Developments				Ongoing for Duration of Compact	
<b>7. Irrigation Diversion Headworks Automation</b>					
a. Retrofit Certain Diversion Structures to Support Automation					





 Full MEF and TIF Instream Flow and River Diversion Allowance Enforcement occurs

Notes

1 Several actions identified in this table are planned for partial implementation prior to the Effective Date as identified in Table 1.0



**Geographic Areas for Implementation of Operational Improvements**

-  Geographic Areas
-  FIIP Irrigated Acres
-  Streams / Rivers
-  Reservation Boundary



0 5 10 20 Miles