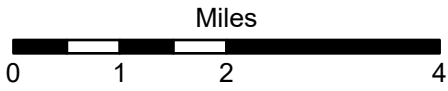




South Meadow Creek Diversion Sites

MADISON RIVER (Basin Name) - Basin 41F

5/14/2024



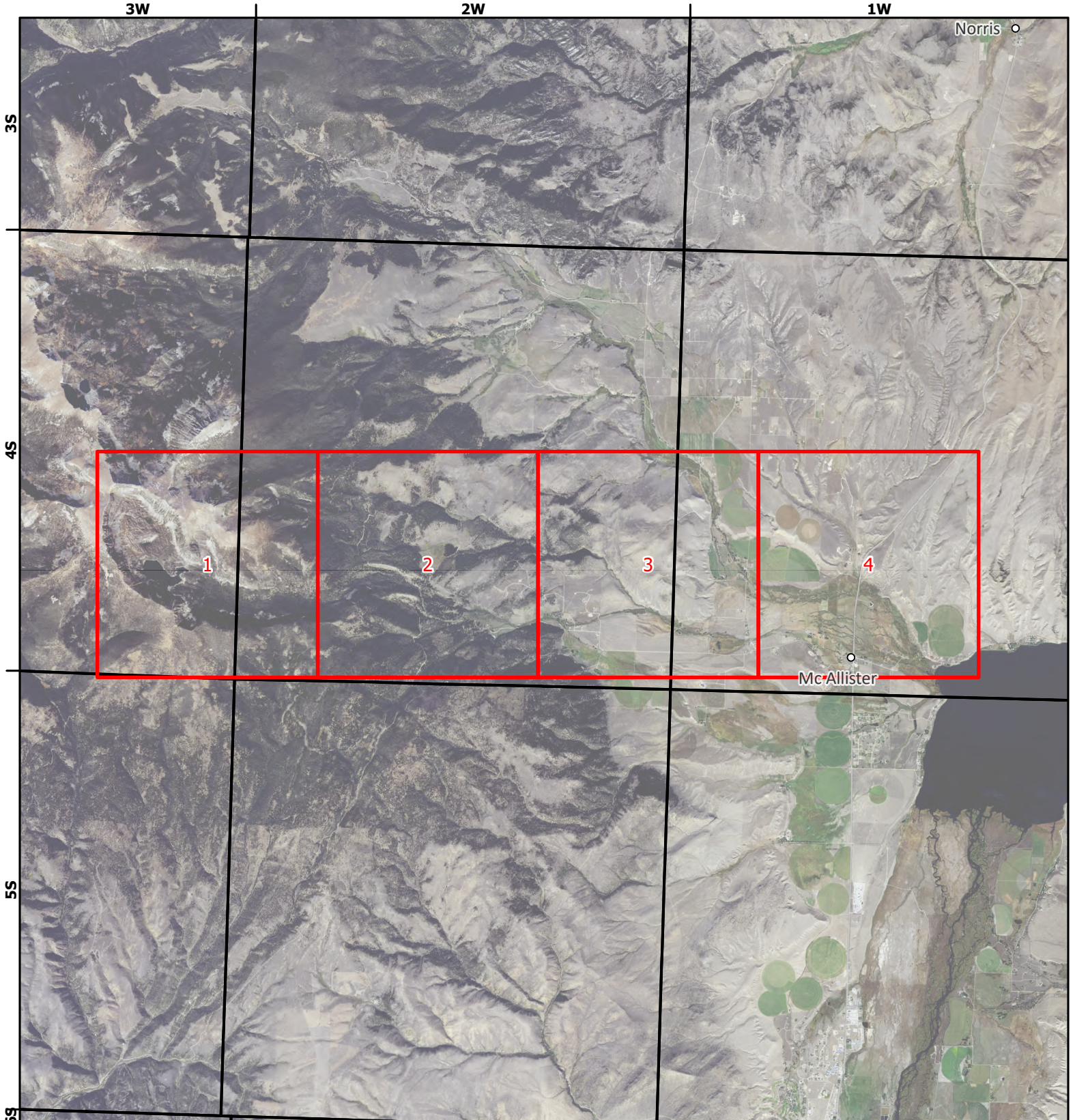
1:114,154



Page # Index
Township

Interstate
Cities and Towns

Aerial Photos: 2021 NAIP



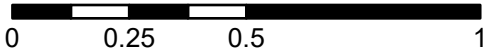
South Meadow Creek Diversion Sites



MADISON RIVER (Basin Name) - Basin 41F

1:26,000

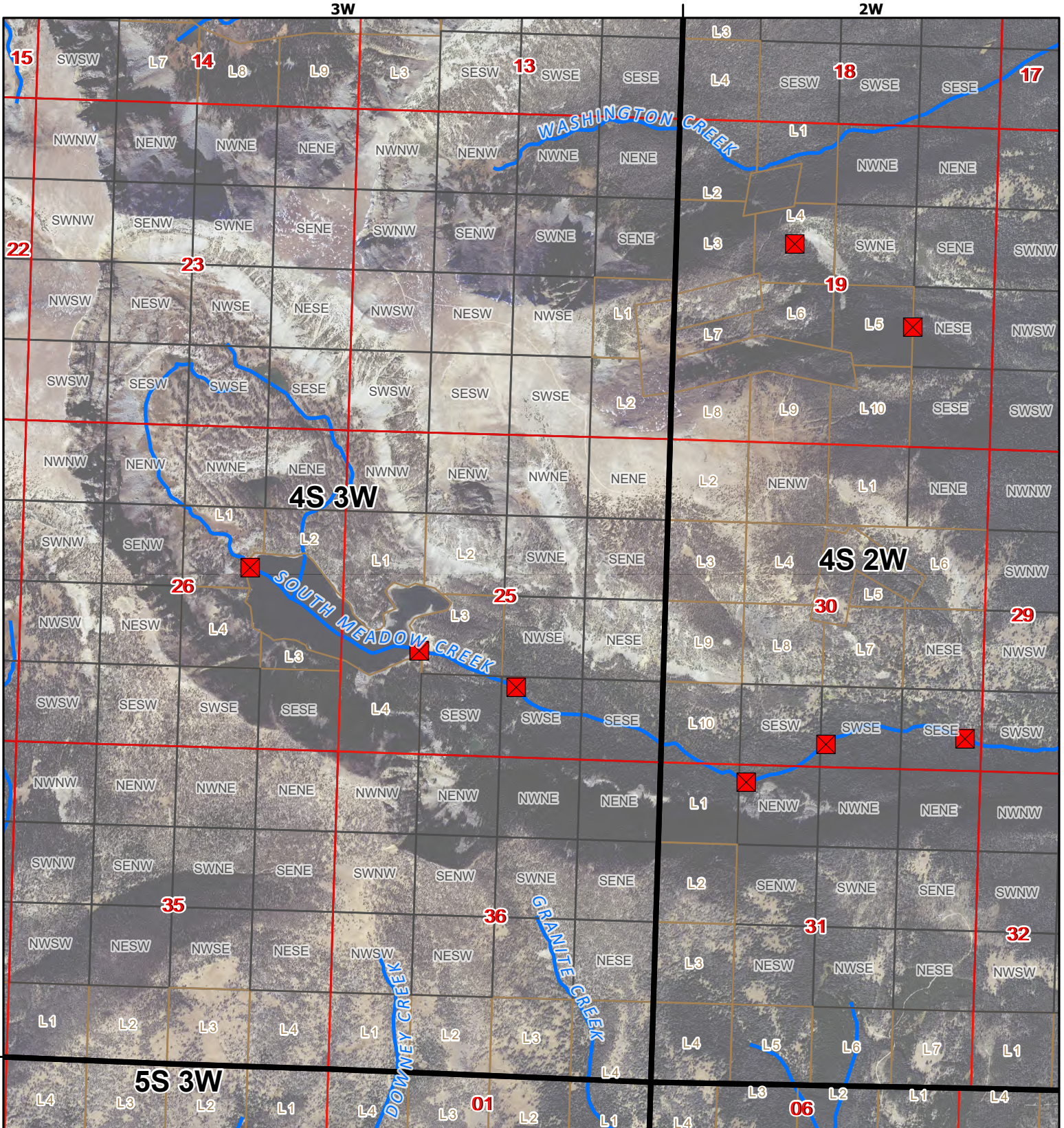
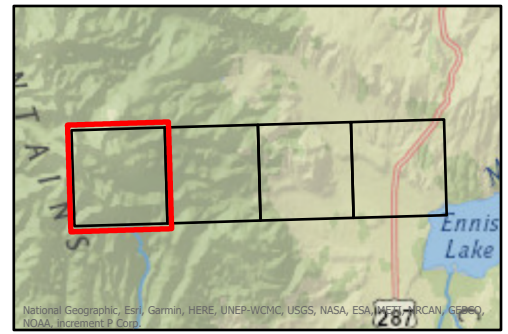
Miles



- ✖ Points of Diversion
- ~ Streams
- ~ Canal Ditch

* The diversions shown on this map are based on available data. The mapped diversions may not be correct.

Aerial Photos: 2021 NAIP



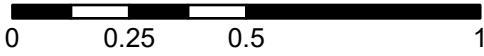
South Meadow Creek Diversion Sites

MADISON RIVER (Basin Name) - Basin 41F



1:26,000

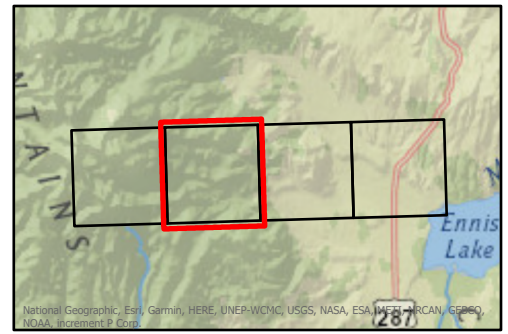
Miles



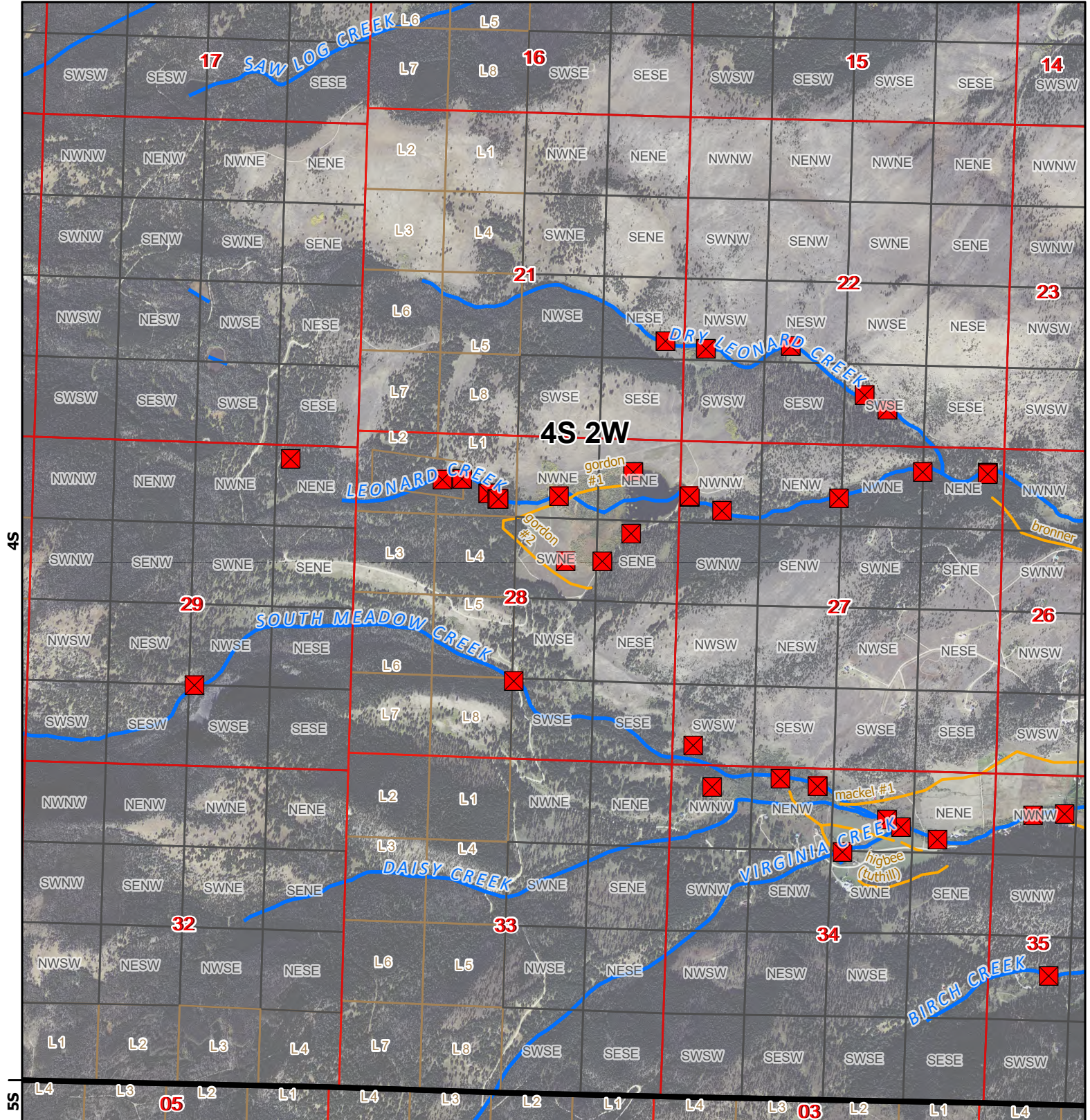
- ✖ Points of Diversion
- ~ Streams
- ~ Canal Ditch

* The diversions shown on this map are based on available data. The mapped diversions may not be correct.

Aerial Photos: 2021 NAIP



2W



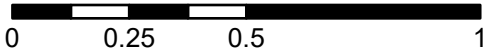
South Meadow Creek Diversion Sites



MADISON RIVER (Basin Name) - Basin 41F

1:26,000

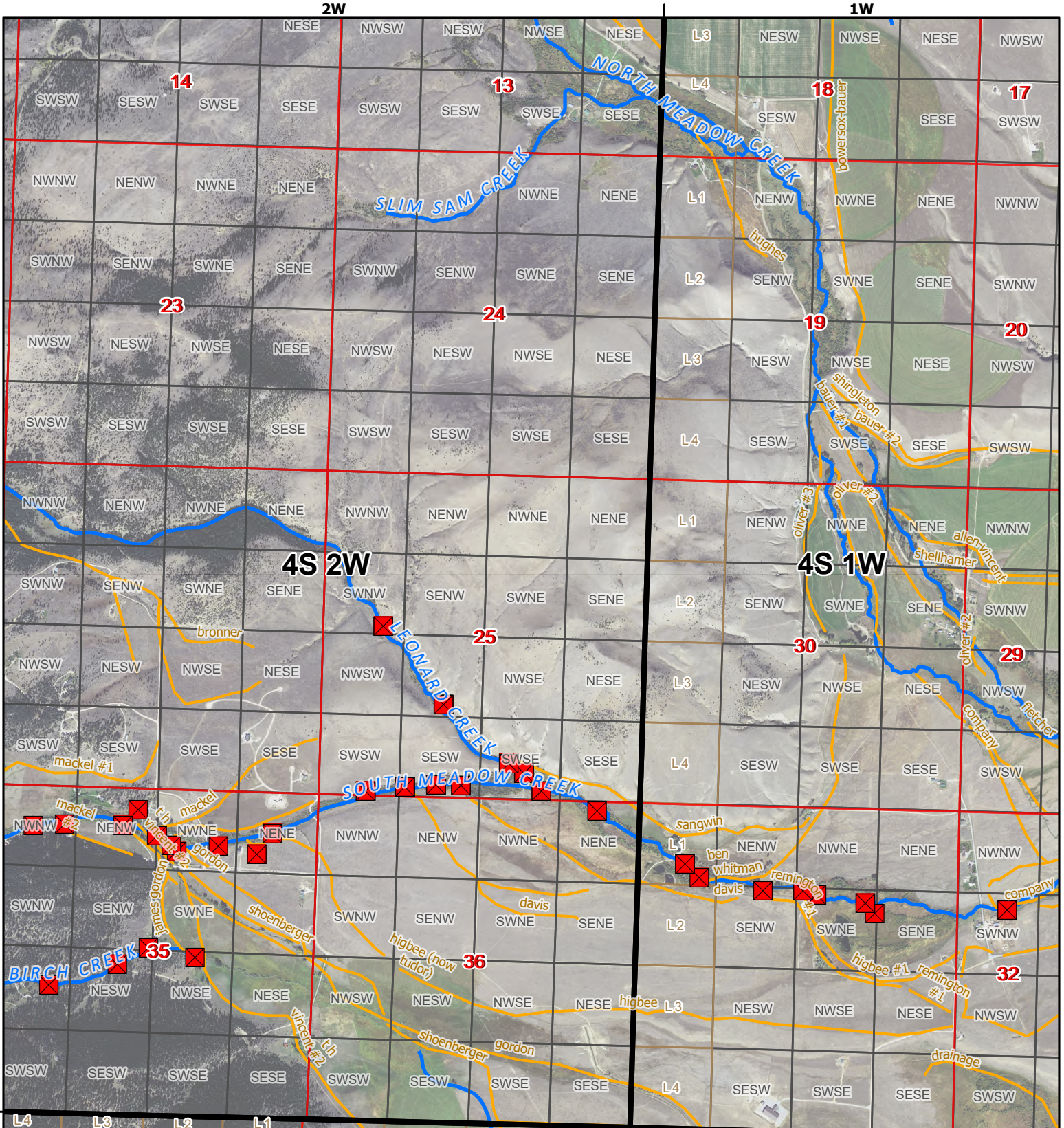
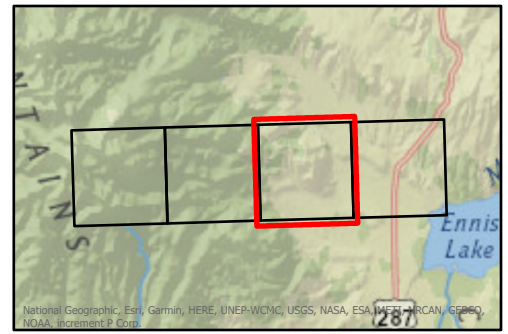
Miles



- Points of Diversion
- ~ Streams
- ~ Canal Ditch

* The diversions shown on this map are based on available data. The mapped diversions may not be correct.

Aerial Photos: 2021 NAIP



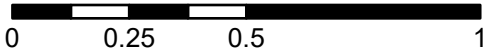
South Meadow Creek Diversion Sites



MADISON RIVER (Basin Name) - Basin 41F

1:26,000

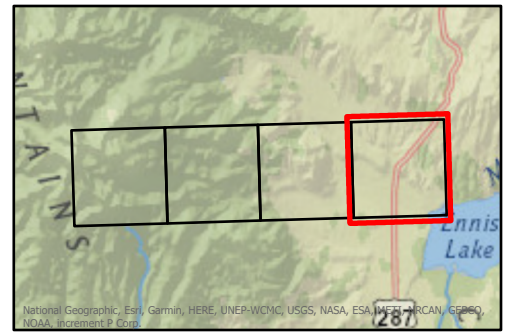
Miles



- Points of Diversion
- ~ Streams
- ~ Canal Ditch

* The diversions shown on this map are based on available data. The mapped diversions may not be correct.

Aerial Photos: 2021 NAIP



1W

