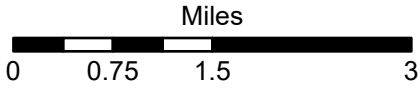




One Horse Creek Diversion Sites

BITTERROOT RIVER, NORTH END SUBBASIN

(Basin Name) - Basin 76HB



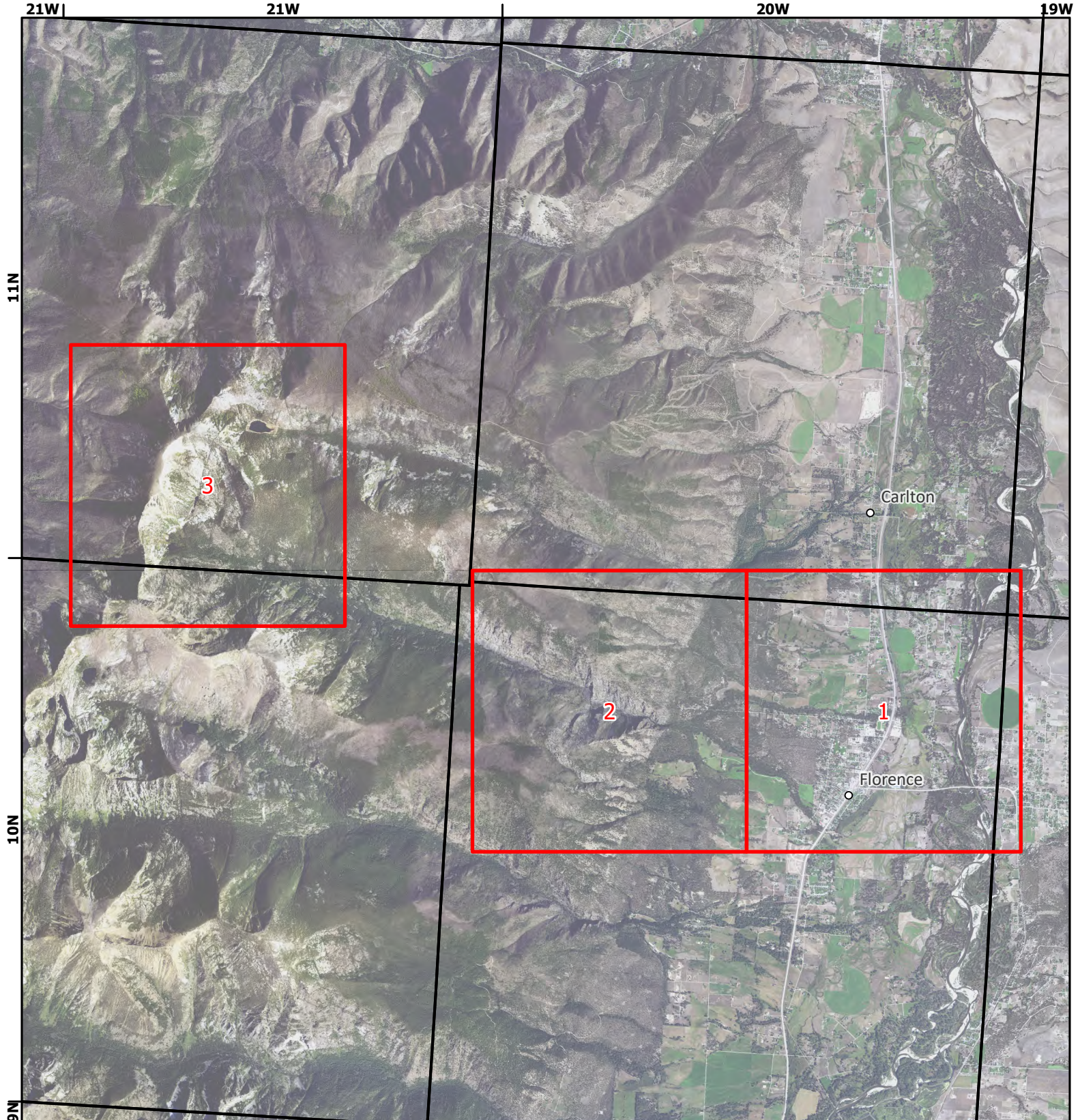
1:91,716



- Page # Index
- Township

- Interstate
- Cities and Towns

Aerial Photos: 2021 NAIP



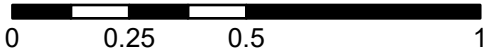


One Horse Creek Diversion Sites

BITTERROOT RIVER, NORTH END SUBBASIN (Basin Name) - Basin 76HB

1:26,000

Miles

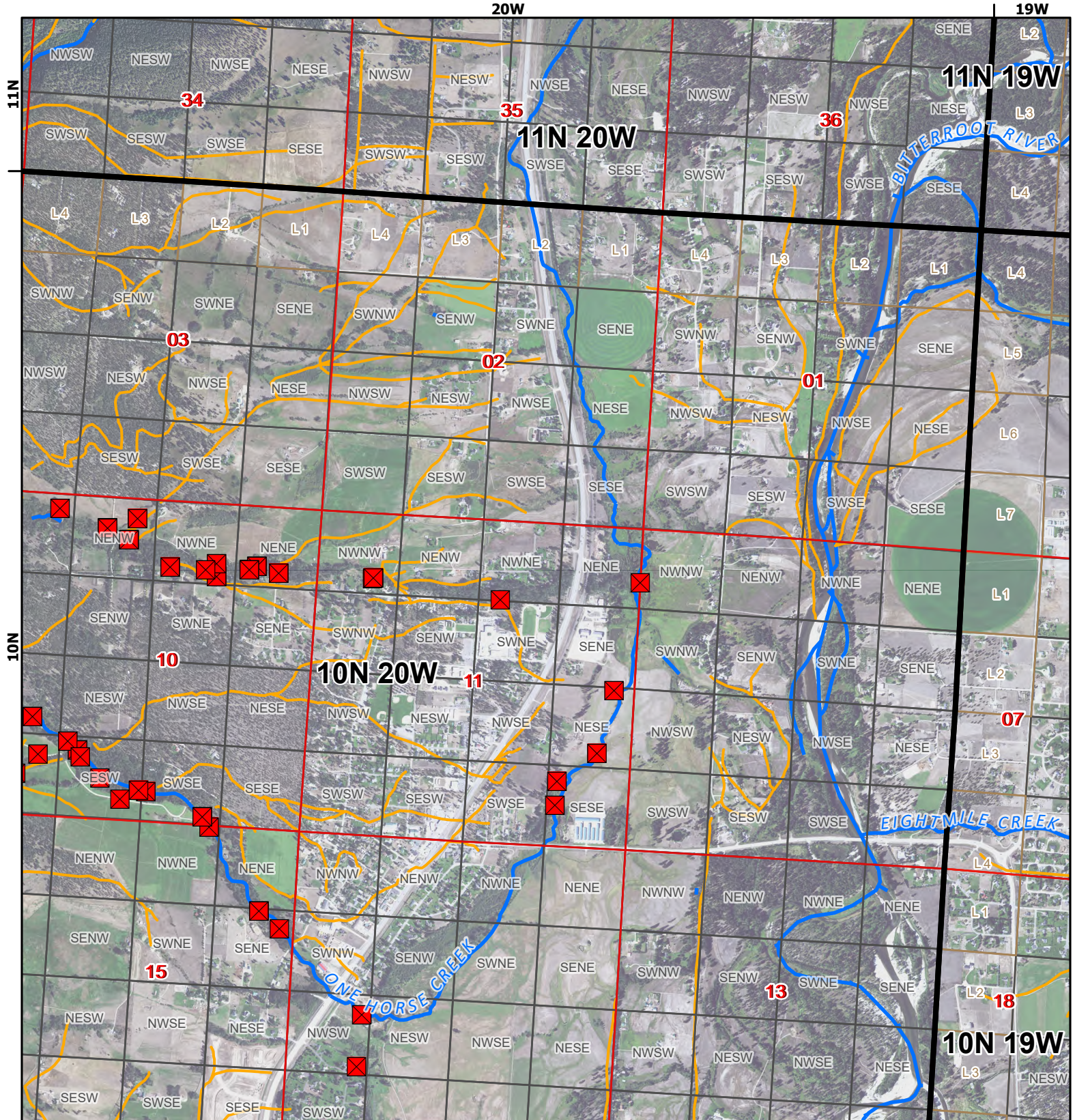
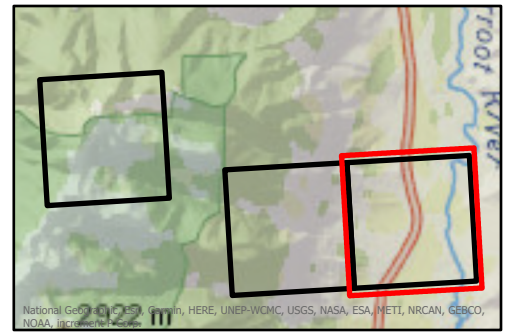


- ✖ Points of Diversion
- ~ Streams
- ~ Canal Ditch

* The diversions shown on this map are based on available data. The mapped diversions may not be correct.

Aerial Photos: 2021 NAIP

20W



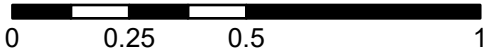


One Horse Creek Diversion Sites

BITTERROOT RIVER, NORTH END SUBBASIN (Basin Name) - Basin 76HB

1:26,000

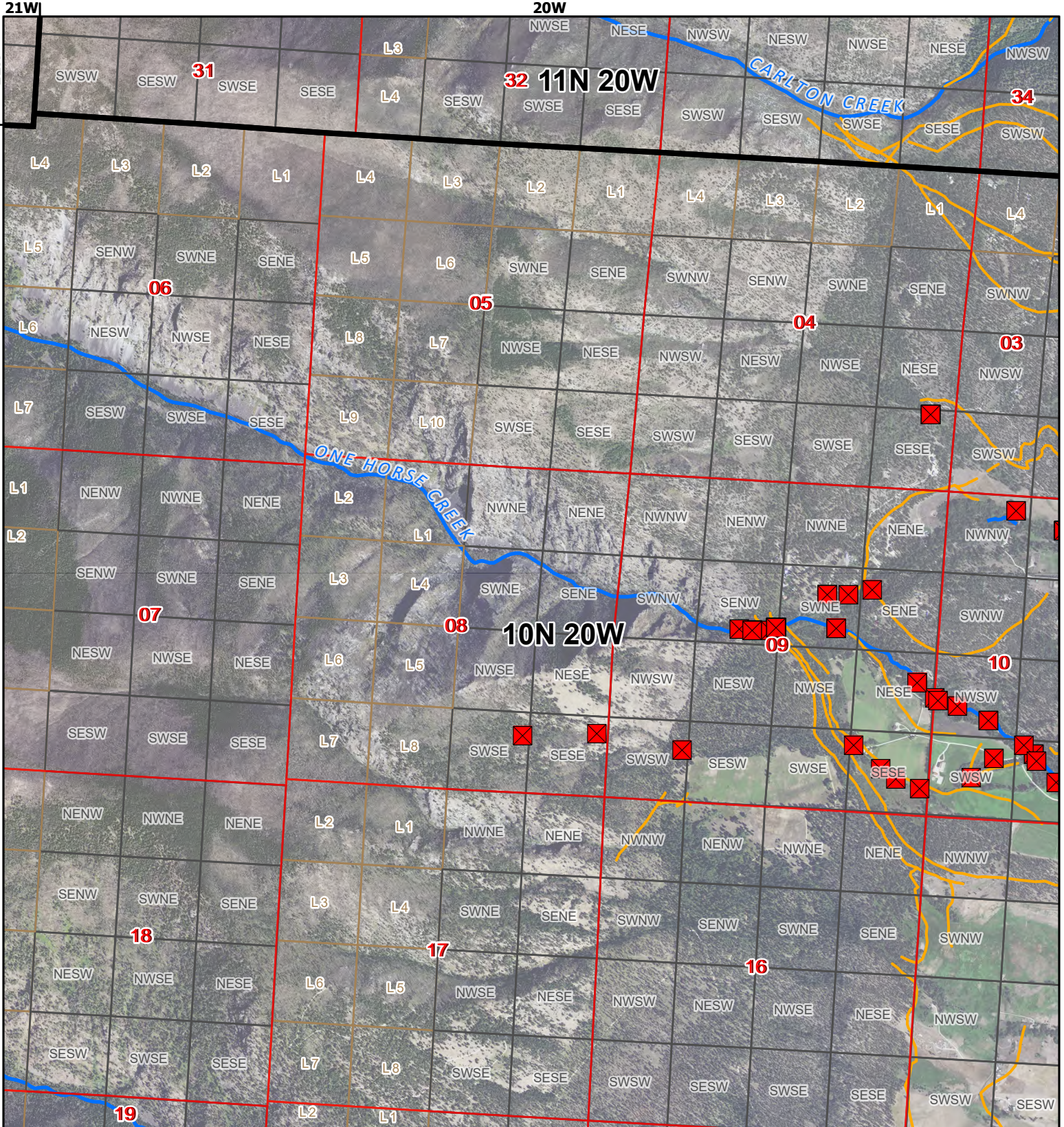
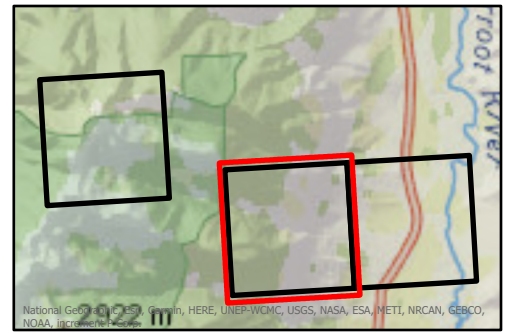
Miles



- ✖ Points of Diversion
- ~ Streams
- ~ Canal Ditch

* The diversions shown on this map are based on available data. The mapped diversions may not be correct.

Aerial Photos: 2021 NAIP



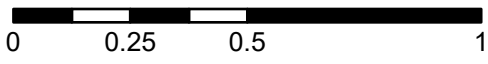


One Horse Creek Diversion Sites

BITTERROOT RIVER, NORTH END SUBBASIN (Basin Name) - Basin 76HB

1:26,000

Miles



- ✖ Points of Diversion
- ~ Streams
- ~ Canal Ditch

* The diversions shown on this map are based on available data.
The mapped diversions may not be correct.

Aerial Photos: 2021 NAIP

