

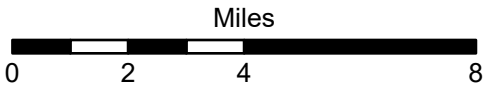


# Dempsey Creek Diversion Sites

## CLARK FORK ABOVE BLACKFOOT RIVER

(Basin Name) - Basin 76G

5/30/2024



1:210,000



- Page # Index
- Township

- Interstate
- Cities and Towns

Aerial Photos: 2021 NAIP





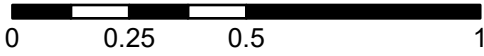
# Dempsey Creek Diversion Sites

## CLARK FORK ABOVE BLACKFOOT RIVER

(Basin Name) - Basin 76G

1:26,000

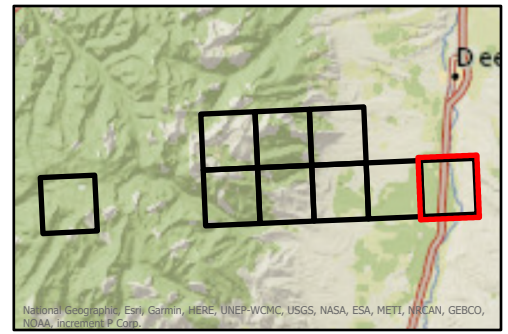
Miles



☒ Points of Diversion

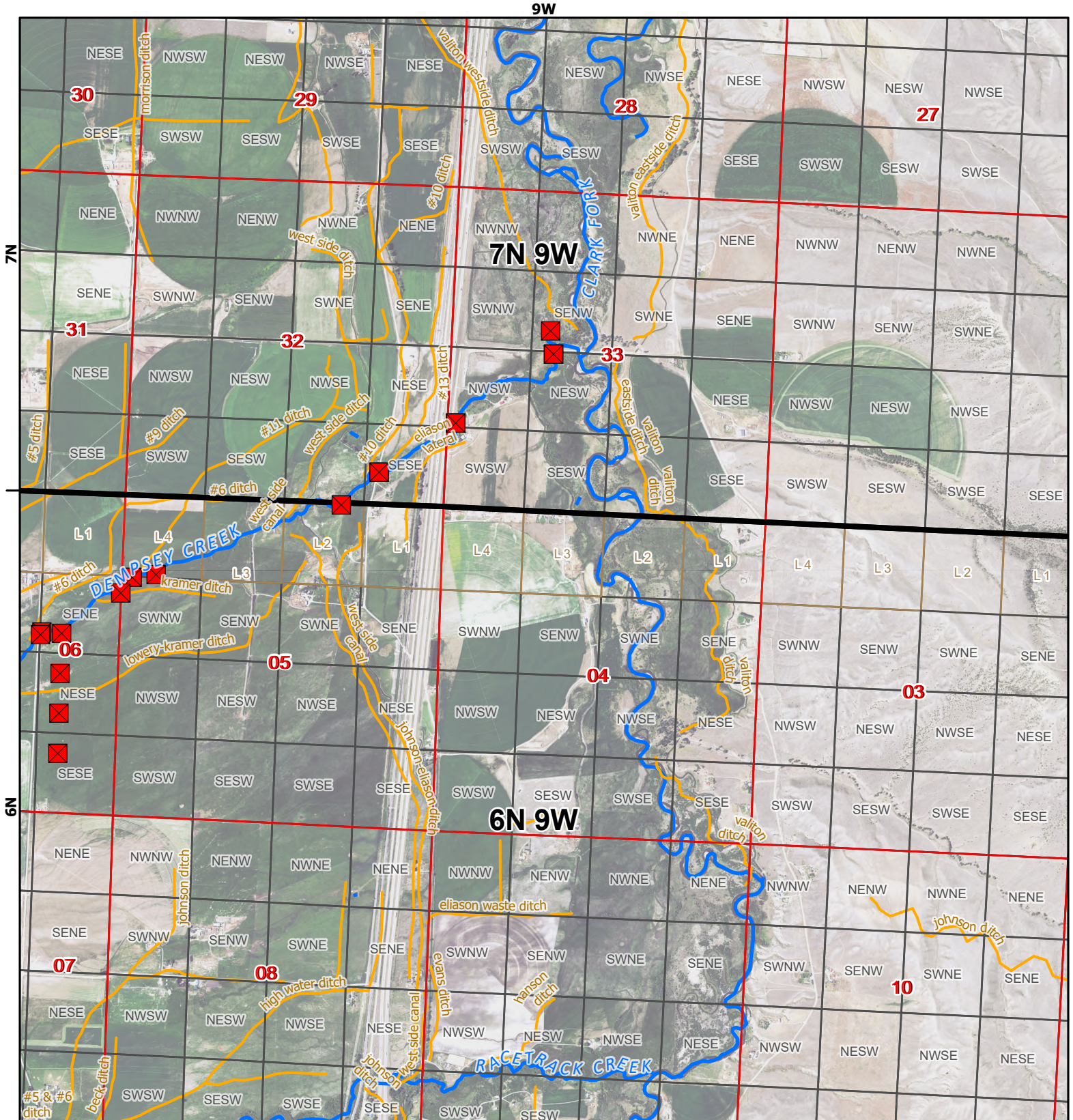
~ Streams

~ Canal Ditch



\* The diversions shown on this map are based on available data. The mapped diversions may not be correct.

Aerial Photos: 2021 NAIP





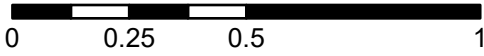
# Dempsey Creek Diversion Sites

## CLARK FORK ABOVE BLACKFOOT RIVER

(Basin Name) - Basin 76G

1:26,000

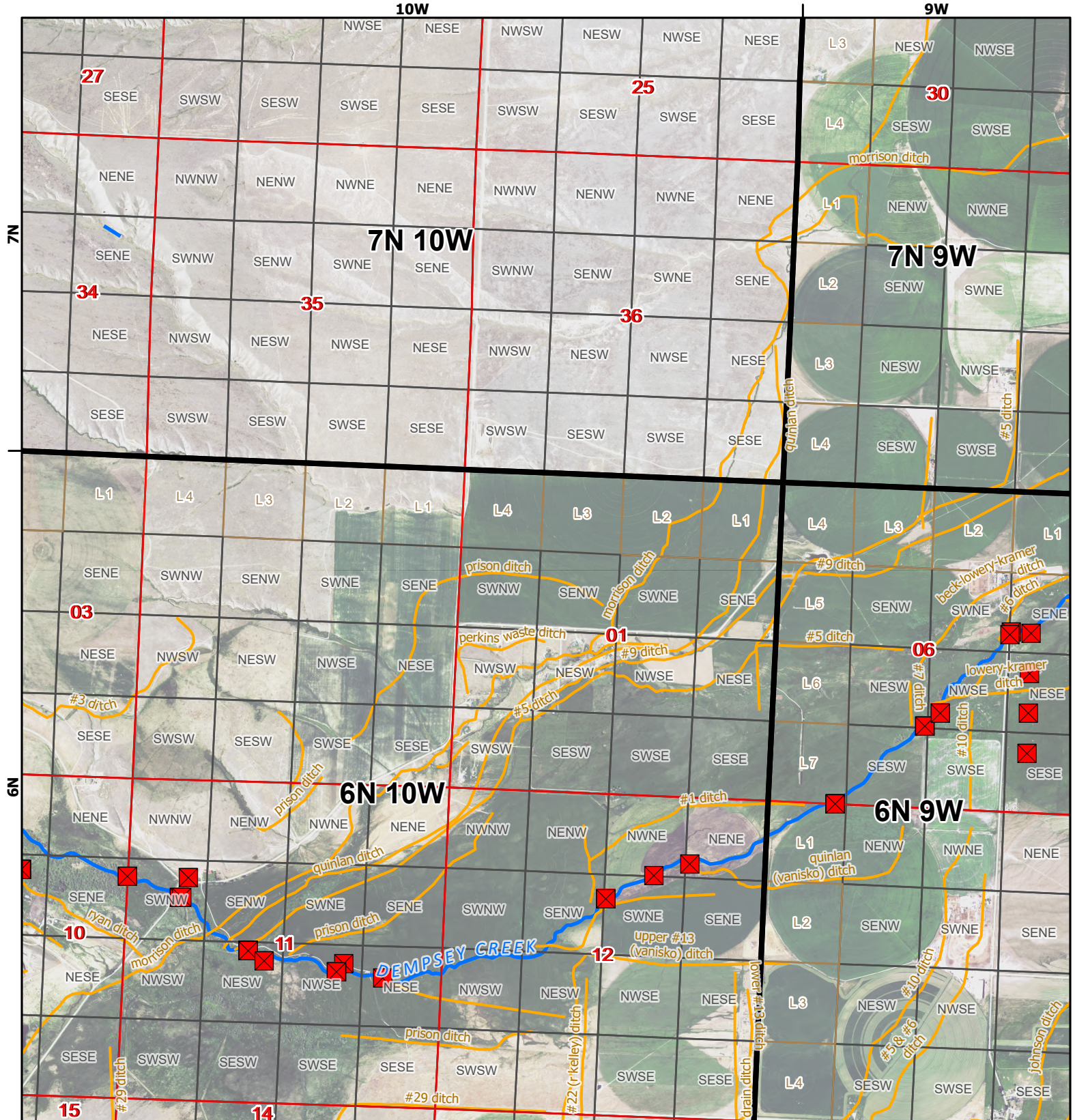
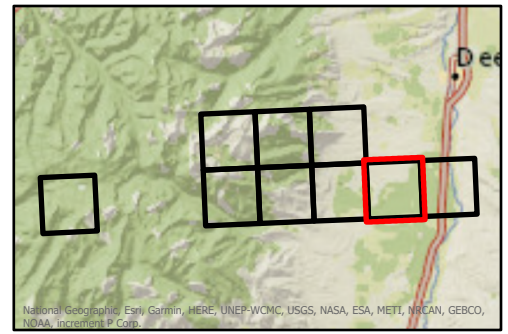
Miles



- Points of Diversion
- ~ Streams
- ~ Canal Ditch

\* The diversions shown on this map are based on available data. The mapped diversions may not be correct.

Aerial Photos: 2021 NAIP



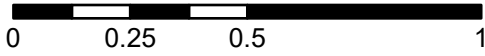


# Dempsey Creek Diversion Sites

## CLARK FORK ABOVE BLACKFOOT RIVER (Basin Name) - Basin 76G

1:26,000

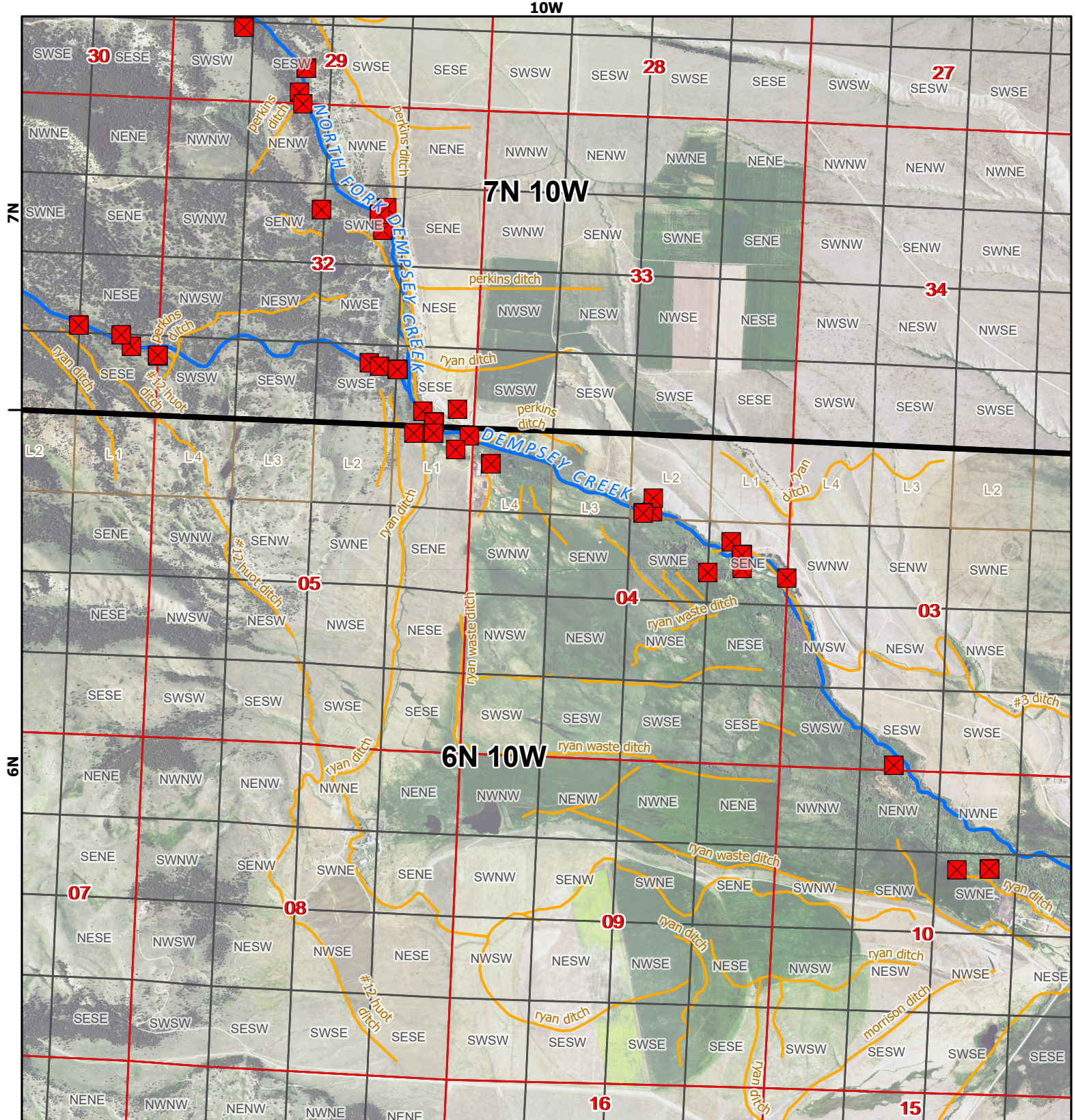
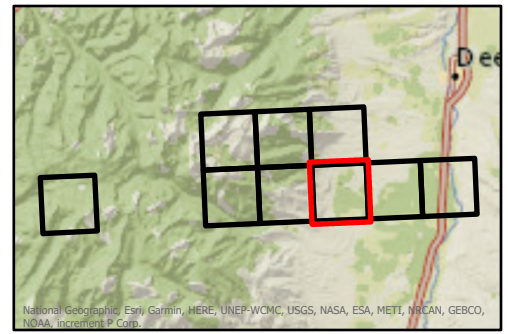
Miles



- ✖ Points of Diversion
- ~ Streams
- ~ Canal Ditch

\* The diversions shown on this map are based on available data. The mapped diversions may not be correct.

Aerial Photos: 2021 NAIP





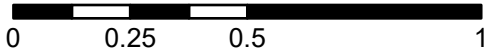
# Dempsey Creek Diversion Sites

## CLARK FORK ABOVE BLACKFOOT RIVER

(Basin Name) - Basin 76G

1:26,000

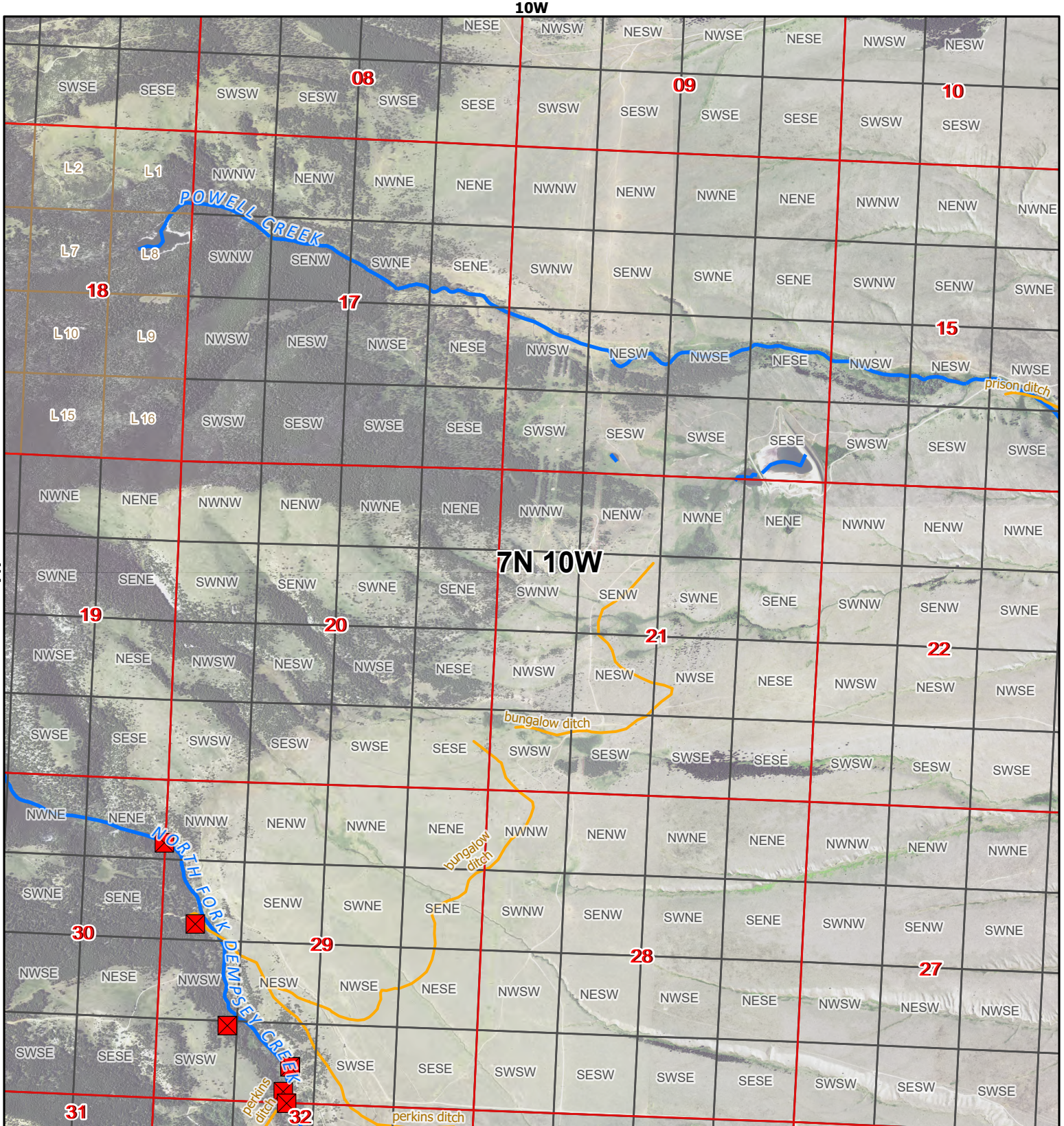
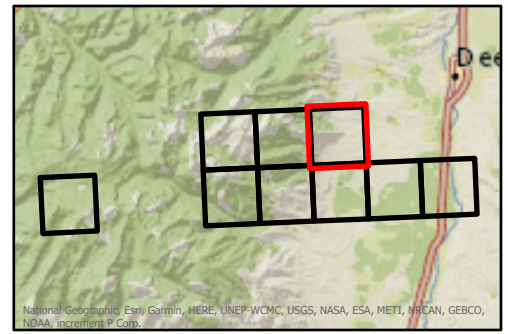
Miles



- Points of Diversion
- Streams
- Canal Ditch

\* The diversions shown on this map are based on available data. The mapped diversions may not be correct.

Aerial Photos: 2021 NAIP





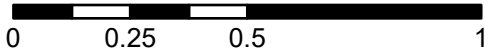
# Dempsey Creek Diversion Sites

## CLARK FORK ABOVE BLACKFOOT RIVER

(Basin Name) - Basin 76G

1:26,000

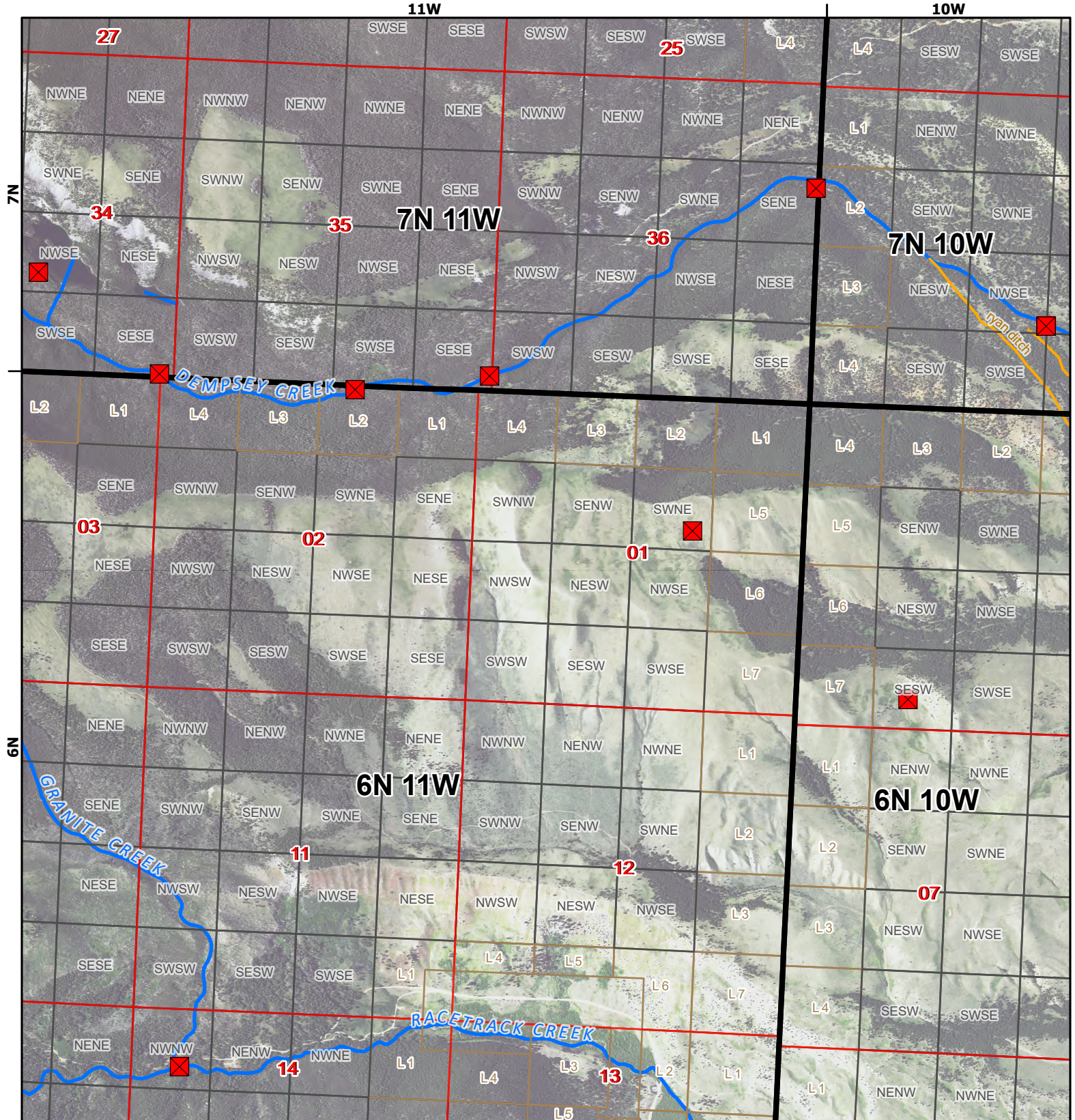
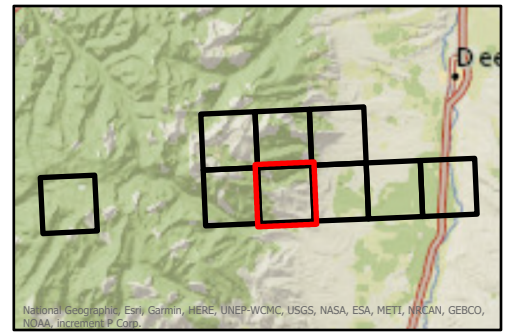
Miles



- ✖ Points of Diversion
- ~ Streams
- ~ Canal Ditch

\* The diversions shown on this map are based on available data. The mapped diversions may not be correct.

Aerial Photos: 2021 NAIP







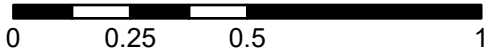
# Dempsey Creek Diversion Sites




## CLARK FORK ABOVE BLACKFOOT RIVER

(Basin Name) - Basin 76G

1:26,000

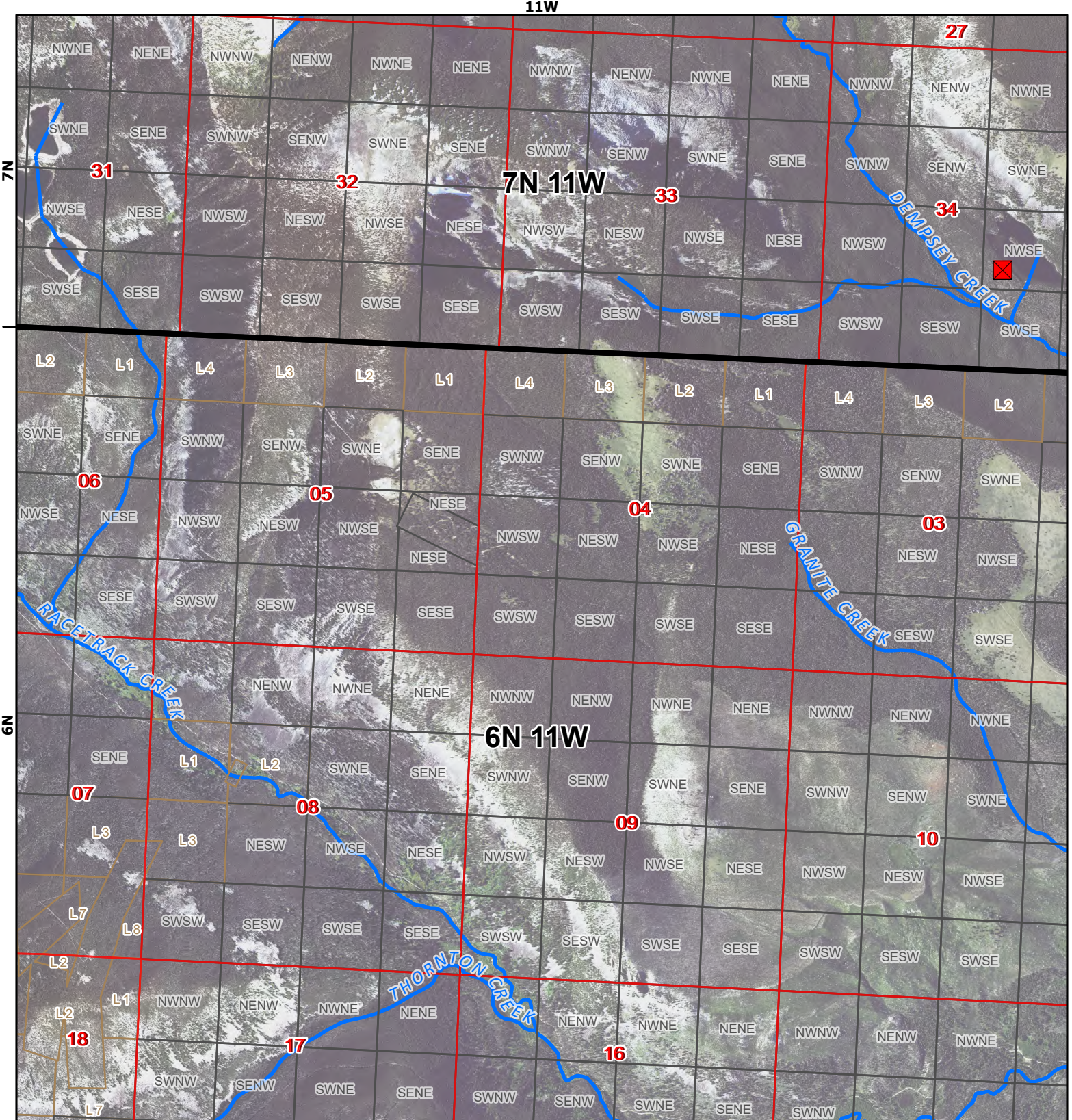
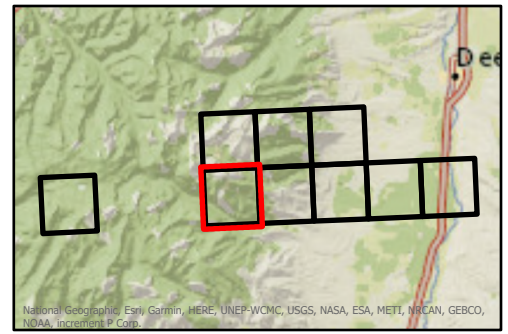
Miles



-  Points of Diversion
-  Streams
-  Canal Ditch

\* The diversions shown on this map are based on available data. The mapped diversions may not be correct.

Aerial Photos: 2021 NAIP





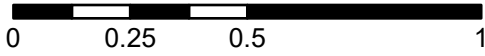





# Dempsey Creek Diversion Sites

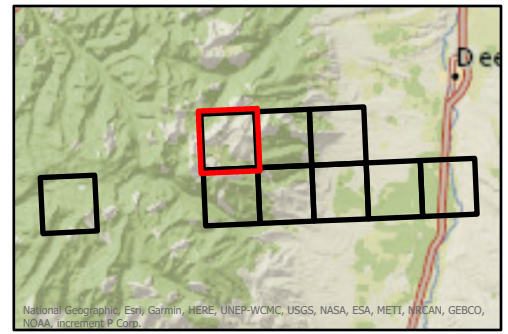
## CLARK FORK ABOVE BLACKFOOT RIVER (Basin Name) - Basin 76G

1:26,000

Miles

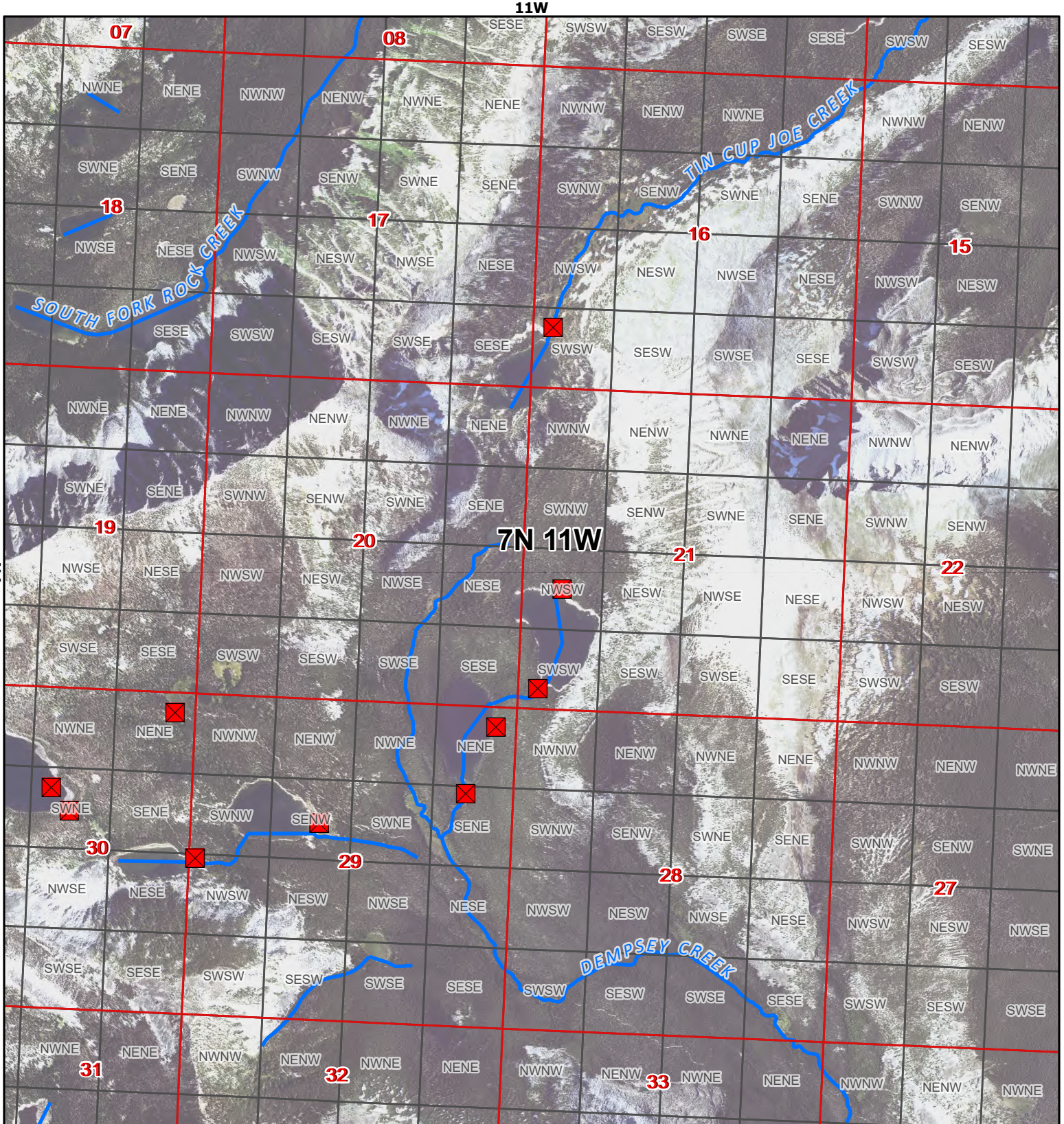


-  Points of Diversion
-  Streams
-  Canal Ditch



\* The diversions shown on this map are based on available data. The mapped diversions may not be correct.

Aerial Photos: 2021 NAIP



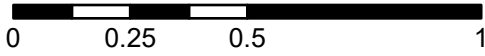


# Dempsey Creek Diversion Sites

## CLARK FORK ABOVE BLACKFOOT RIVER (Basin Name) - Basin 76G

1:26,000

Miles



- Points of Diversion
- Streams
- Canal Ditch

\* The diversions shown on this map are based on available data. The mapped diversions may not be correct.

Aerial Photos: 2021 NAIP

