




Martin Creek Diversion Sites

ARROW CREEK (Basin Name) - Basin 41R




1:66,056



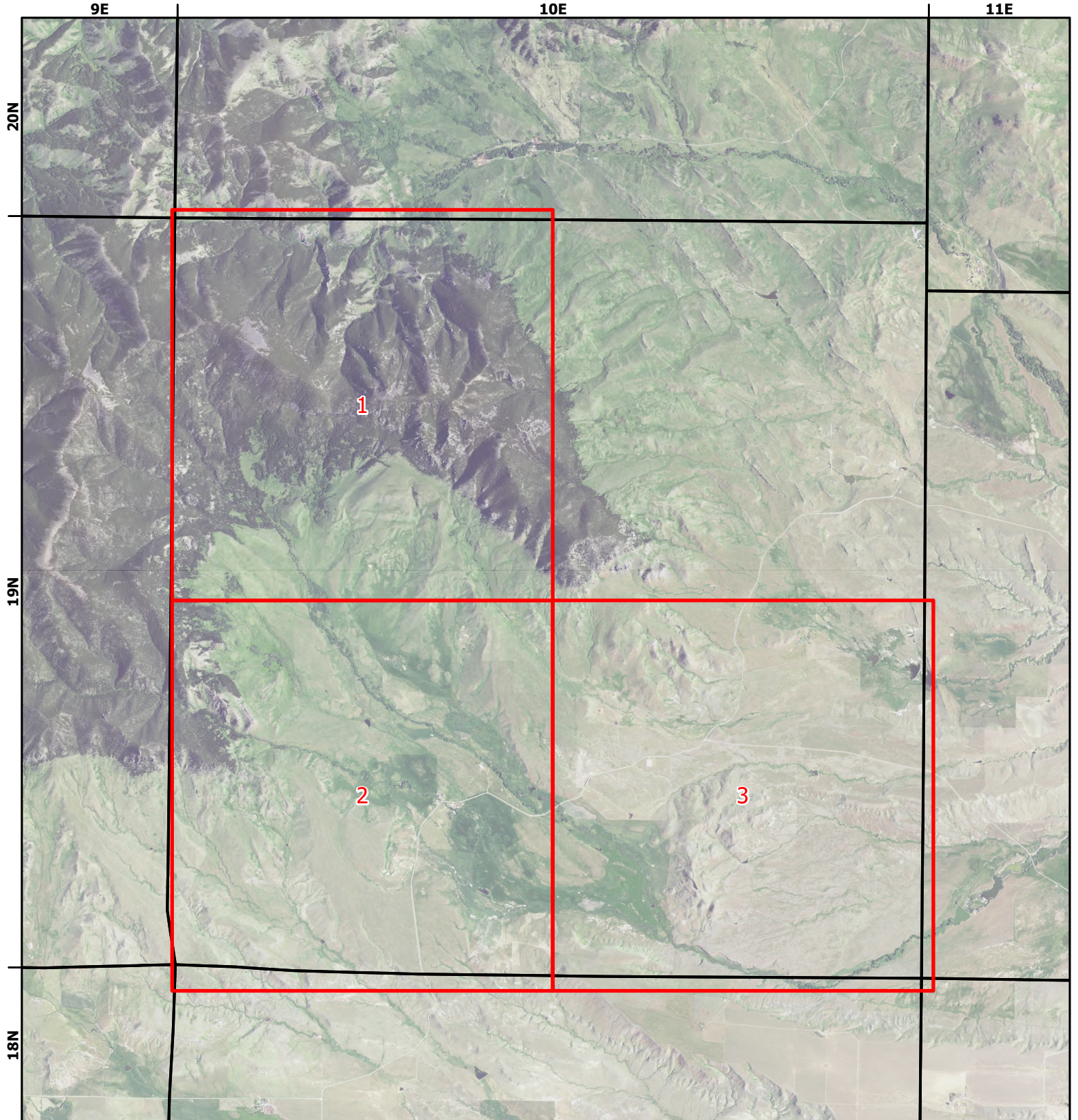
 Page # Index

 Township

 Interstate

 Cities and Towns

Aerial Photos: 2021 NAIP



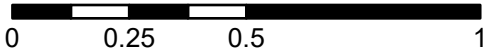
Martin Creek Diversion Sites

ARROW CREEK (Basin Name) - Basin 41R



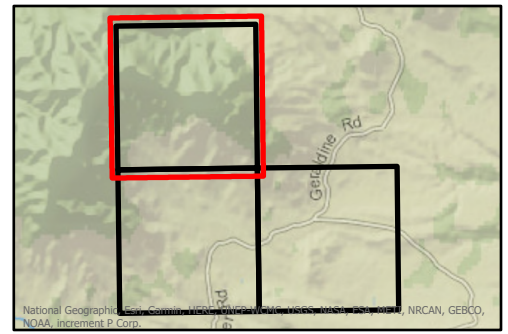
1:26,000

Miles

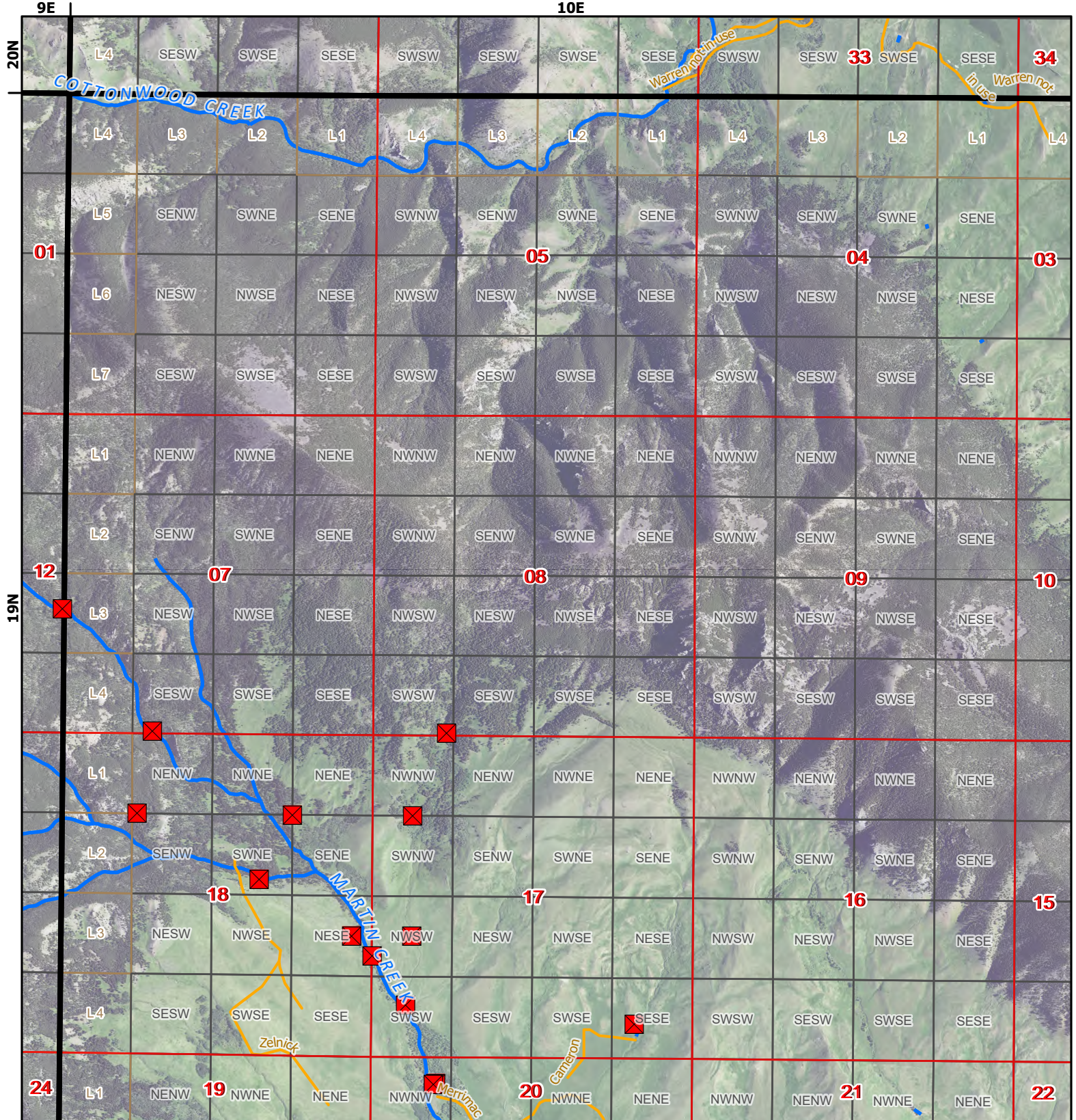


- ✖ Points of Diversion
- ~ Streams
- ~ Canal Ditch

Aerial Photos: 2021 NAIP



* The diversions shown on this map are based on available data. The mapped diversions may not be correct.



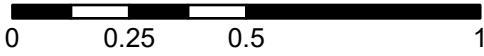
Martin Creek Diversion Sites

ARROW CREEK (Basin Name) - Basin 41R



1:26,000

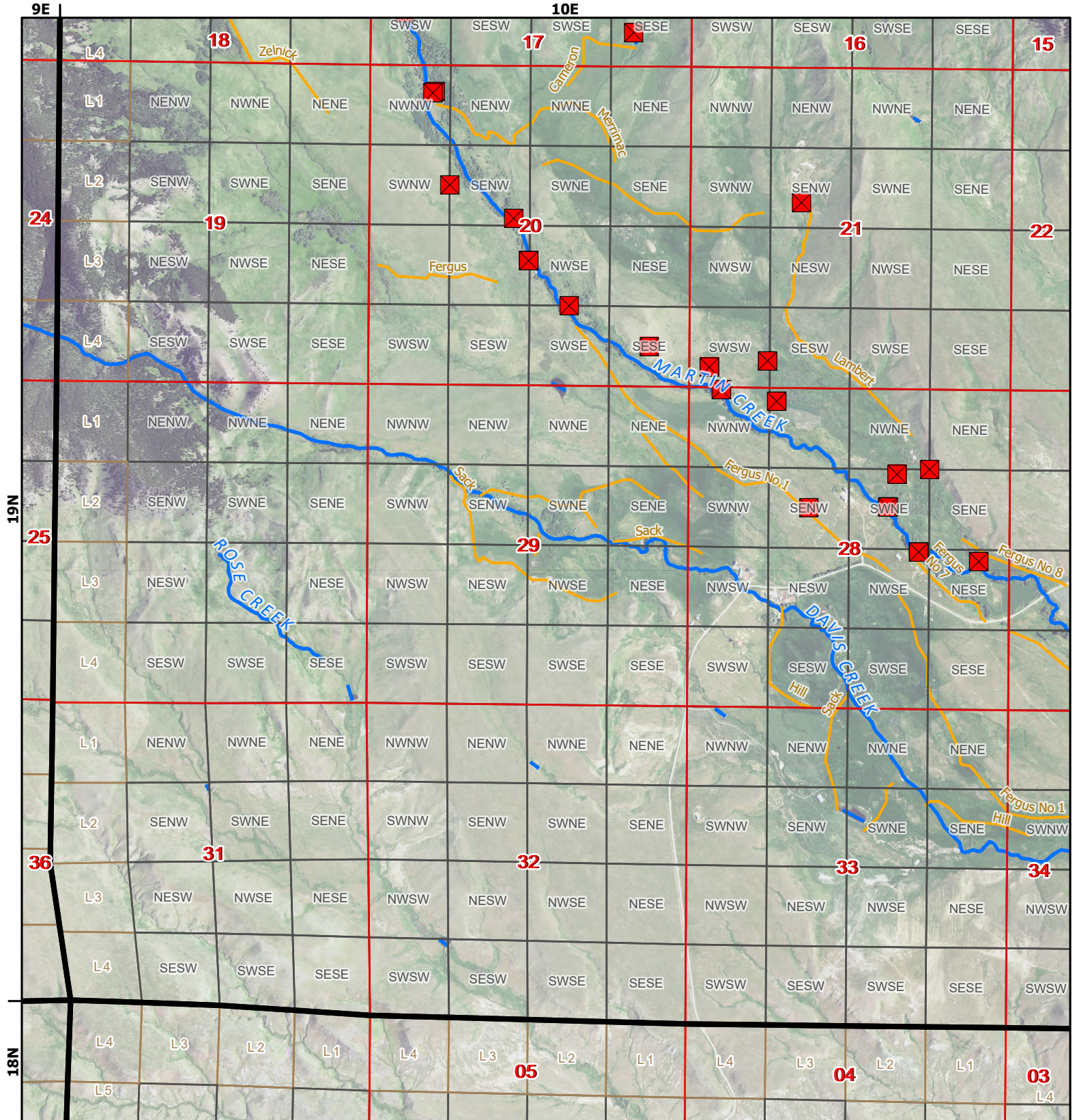
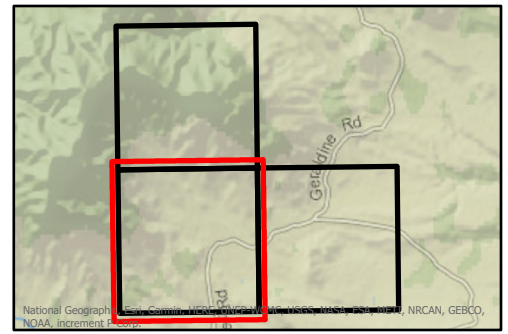
Miles



- Points of Diversion
- ~ Streams
- ~ Canal Ditch

* The diversions shown on this map are based on available data. The mapped diversions may not be correct.

Aerial Photos: 2021 NAIP



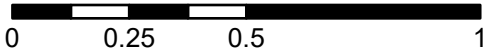
Martin Creek Diversion Sites

ARROW CREEK (Basin Name) - Basin 41R

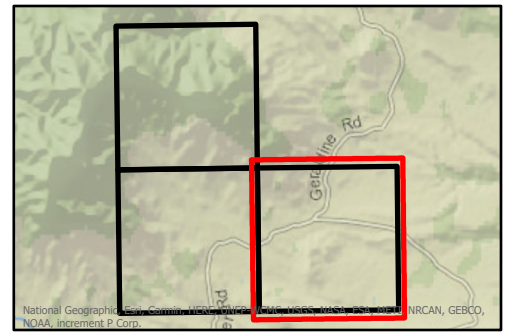


1:26,000

Miles



- ✖ Points of Diversion
- ~ Streams
- ~ Canal Ditch



* The diversions shown on this map are based on available data. The mapped diversions may not be correct.

Aerial Photos: 2021 NAIP

