

**IN THE WATER COURT OF THE STATE OF MONTANA
UPPER MISSOURI DIVISION
BEAVERHEAD RIVER (BASIN 41B)**

**FINDINGS OF FACT AND CONCLUSIONS OF LAW FOR THE
INTERLOCUTORY DECREE OF THE BEAVERHEAD RIVER
(BASIN 41B)**

The Preliminary Decree of the Beaverhead River (Basin 41B) was issued on May 9, 2013. Objections filed to claims in the Preliminary Decree and issue remarks appearing on the claims in the Preliminary Decree continue to be addressed and resolved.

These Findings of Fact and Conclusions of Law are issued for inclusion in the Interlocutory Decree of the Beaverhead River (Basin 41B) as authorized by §§ 3-7-224(2), 85-2-231, MCA.

FINDINGS OF FACT

DESCRIPTION OF BASIN

1. Basin 41B encompasses the Beaverhead River and its tributaries as well as groundwater located within Basin 41B. The boundaries of Basin 41B are outlined on the attached map. Although this Decree includes water rights within the hydrologic boundaries of Basin 41B, it does not include all the water rights in the Basin. The purpose of this Decree is to adjudicate water rights not included in the Preliminary Decree in Basin 41B.

DECREE ABSTRACTS AND INDEX

2. In addition to these Findings and Conclusions, this Decree consists of abstracts for the 686 claims included in this Decree. Accompanying the Decree are six Indexes designed to facilitate research on water rights included in the Decree. The six Indexes are as follows:

- Water Right Claim Identification Number Index
- Owner Name Index
- Priority Date Index

- Point of Diversion Index
- Source Name Index
- Issue Remark Index

3. Copies of the Decree and six Indexes are located at the Department of Natural Resources and Conservation (“DNRC”) Bozeman Regional Office, the DNRC Water Rights Adjudication Office in Helena, and the Montana Water Court in Bozeman. This information is also available on the DNRC’s Water Rights Adjudication webpage.

UNRESOLVED FACTUAL AND LEGAL ISSUES

4. Parties may file objections ONLY to the water rights in this Decree. Issues may also be raised by the Water Court on its own initiative. Rule 8, W.R.Adj.R.

Unresolved factual and legal issues have been noted by issue remarks on claim abstracts. The Issue Remark Index combines the issue remarks into a list arranged numerically by water right claim number. Searching the Issue Remark Index by water right claim number will identify issue remarks on individual claim abstracts. Issue remarks not resolved through the objection process will be resolved pursuant to § 85-2-248, MCA.

Water users within this Basin and other interested persons will be mailed a Notice of Entry of Interlocutory Decree and Notice of Availability contemporaneously with the filing of these Findings and Conclusions. The Notice of Availability explains the objection process and sets a deadline for filing objections with the Water Court.

CONCLUSIONS OF LAW

1. This is a general adjudication of existing water rights. An existing water right is a right to the use of water which is protected under the law as it existed prior to July 1, 1973. Section 85-2-102(13), MCA.

2. Certain claims were exempt from the statement of claim filing process but could be voluntarily filed. Section 85-2-222, MCA (1979). These exempt rights were for stock or domestic uses from instream or groundwater sources. In 2013, the Montana Legislature created a process to file claims for existing water rights that were exempt from filing in the statewide water right adjudication. Section 85-2-222(2), MCA.

3. The Montana Water Court has jurisdiction to enter an Interlocutory Decree of the Beaverhead River (Basin 41B) pursuant to Title 85, Chapter 2, Montana Code Annotated. *Ariz. v. San Carlos Apache Tribe*, 463 U.S. 545, 103 S. Ct. 3201 (1983); *State ex rel. Greely v. Confederated Salish and Kootenai Tribes*, 219 Mont. 76, 712 P.2d 754 (1985).

4. These Findings of Fact, Conclusions of Law, and abstracts define these 686 existing water rights under Montana law in Basin 41B and comprise an Interlocutory Decree in accordance with § 85-2-231, MCA, and Rule 4, W.R.Adj.R.

ELECTRONICALLY SIGNED AND DATED BELOW.

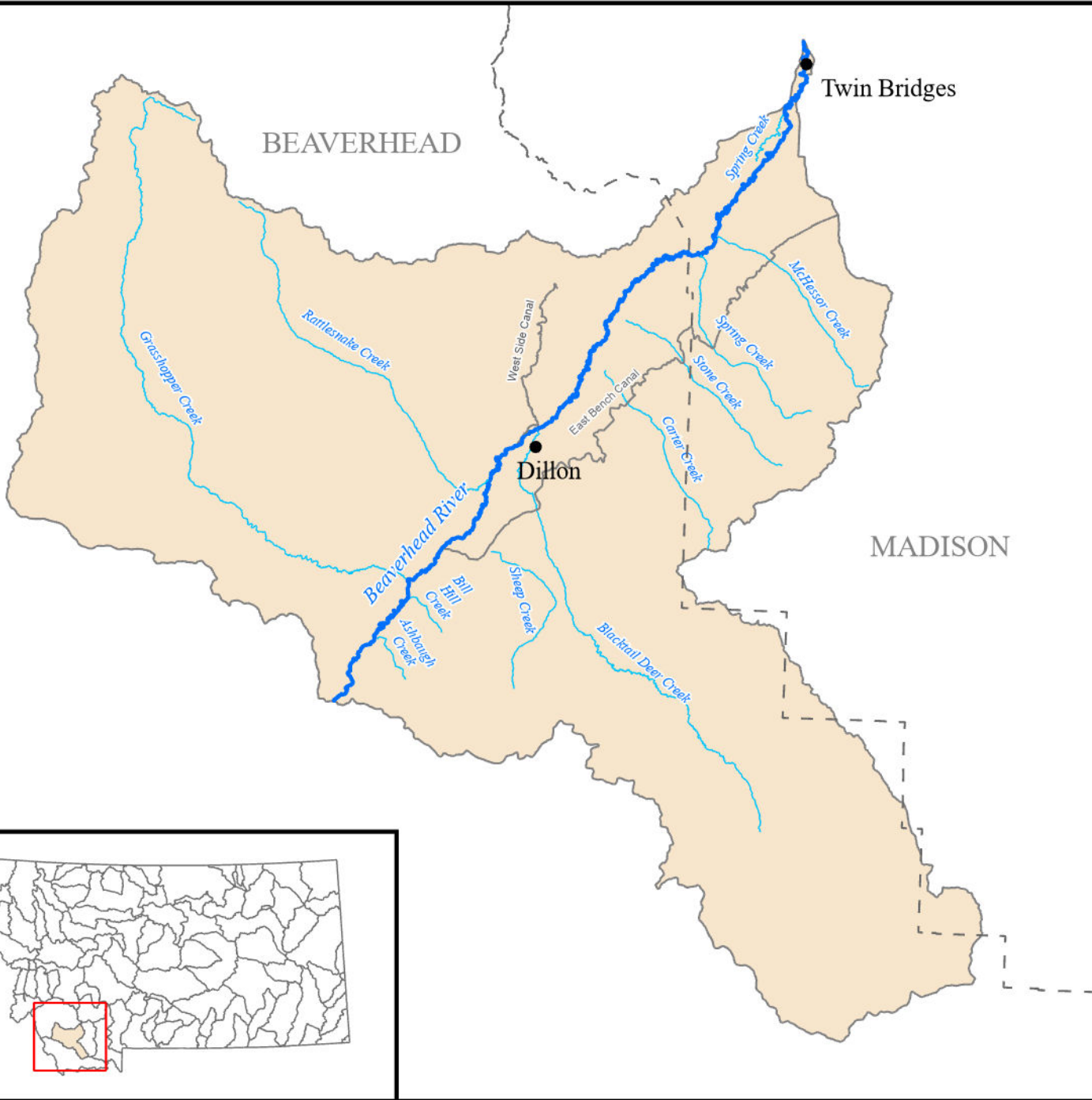
Service via Electronic Mail:

Montana DNRC, Water Resources
Todd Netto, Adjudication, Enforcement and Distribution Bureau Chief
Shannon Buswell, Water Rights Data Quality & Standards Program Supervisor
PO Box 201602
Helena, MT 59620
TNetto@mt.gov
Shannon.Buswell@mt.gov

Montana DNRC, Helena Regional Office
Water Resources Division
1424 9th Ave.
PO Box 201601
Helena, MT 59620-1601
(406) 444-6999
Jason.Larsen2@mt.gov
jdaly2@mt.gov
Kirsten.walsh@mt.gov

Electronically Signed By:
Hon. Judge Stephen R Brown
Fri, Jan 31 2025 08:12:25 AM

Basin 41B - Beaverhead River

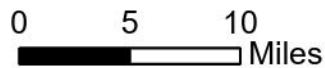


Legend

- B41BTowns
- - - County Line
- Basin41B Boundary

Type

- River
- Stream
- Canal



Scale: 1:550,000

